



UNDERGRADUATE **PROSPECTUS**

2024

YOUR **FUTURE** AWAITS

WHY CHOOSE STRANMILLIS?





WELCOME

Thank you for considering to apply to study at Stranmillis University College. Choosing what you want to study and where, is one of the most important decisions you will ever make. Stranmillis offers a range of education focused degree programmes that are shaping education, unlocking potential and building better futures for young people, families and communities.

A University College of Queen's University Belfast, for over 100 years, we have supported our students to become the next generation of leaders in education and related fields.

As a student at Stranmillis University College, you are part of a learning community that is making a

difference in Northern Ireland and further afield as we shape education, unlock potential and build a better future for all.

As you read through this prospectus, I hope that you will get a real sense of life at Stranmillis. As a College, we are committed to delivering excellence in teaching, learning and research. However, life at higher education involves much more than just your main course of study and professional placements. The opportunity to study abroad, as well as degree enhancement and volunteering opportunities, will also play an important part of your time with us.

The sense of community that comes from being part of a student-centred University College and having opportunities to fully engage in student life



will add further to the richness and uniqueness of your learning experience with us.

That 'all-encompassing student experience' is part of the reason why our students succeed and are highly sought after. It also explains why Stranmillis University College is the number one higher education institution for overall student satisfaction in Northern Ireland.

I hope that you choose to start the next phase of your educational journey with us and I look forward to welcoming you to Stran and to our college community.

Professor Jonathan Heggarty
MBE, BSc(Hons), PhD, PGCFHE, MCGI
Principal and CEO



CONTENTS

YOUR FUTURE AWAITS

Welcome 2

STUDENT CENTRED

A Place For You 6

The Students' Union 8

Living On Campus 10

Stranmillis Campus 12

STUDY AT STRAN

Reimagine Learning 14

Teaching and Learning 16

Shaping Your Future 18

A Global Outlook 20

World-Class Study Facilities 22

You Are Not Alone 24

Support Tailored To You 26

Ready To Run 28

World Leader In Research 30

EXPLORE OUR COURSES

Undergraduate Entrance Requirements 32

Initial Teacher Education 34

BEd (Hons) Post-Primary 36

BEd (Hons) Primary 48

Early Childhood Studies 50

BA (Hons) Early Childhood Studies (Full-time) 52

BA (Hons) Early Childhood Studies (Part-time) 54

Foundation Degree Early Childhood Studies 56

Physical Education and Sport 58

BSc (Hons) Physical Education and Sport 60

Foundation Degree Physical Education 62

and Sport

AN INVESTMENT IN YOUR FUTURE

How Much Does It Cost? 65

Bursaries and Financial Support 66

Applications and Admissions 67

STUDENT CENTRED



STUDENTS' UNION

Voted best small Students' Union in Ireland two years running.



STRAN HALLS

Unique catered accommodation offering great value student living.



STUNNING CAMPUS

Great location in the heart of South Belfast, awarded EcoCampus status.

DISCLAIMER

The information in this prospectus is intended as a guide to the courses, programmes and facilities offered by Stranmillis University College. Further details are openly available on our website. The information provided in this prospectus is correct at the time of publication. Changes may be made to our programmes, courses and the facilities and resources which support them. Any changes will be available on our website and will be made clear to you before any offer is made to you. Please visit www.stran.ac.uk for the latest information.



A PLACE FOR YOU

When you walk through the gates of the College you can easily forget that you are so close to the heart of the city. On campus, you will discover a strong sense of community and a unique student experience where lifelong connections and friendships are made. From listed buildings to modern teaching spaces; ponds and woodlands to open green spaces, our beautiful campus contains the facilities, resources and environment to help you develop your talents.



“

I had such a warm welcome when I first came that I felt I was already part of the Stranmillis family.

ANNA GUEST

”



GET ACTIVE

In addition to our on-campus sports facilities, you can get involved in the great outdoors, with great cycling, running and walking trails, tennis clubs, sports pitches and watersport centres all on your doorstep.

FULL ON BELFAST

Named the best region in the UK by Lonely Planet, and among the top five most affordable student cities in the UK, the college is located in the Queen's Quarter of Belfast, where you can enjoy a colourful mix of social, cultural, art, music and history experiences.

TAKE IT EASY

When you are looking for some downtime, there are plenty of places for you to relax. Chatz Restaurant, Betty's Coffee Shop, Scholars and the Students' Union are lively spaces to meet and spend time with friends; or simply take a stroll through the scenic campus and enjoy the peaceful green haven.

THE BIGGER PICTURE

Your individuality is important; whether your passion is for art, music, drama or media, the College provides specialist resources to help you express yourself, including a drama theatre, music suites and dedicated media production, art and design studios. If you love performing, there are a wealth of opportunities to showcase your talents from Stran TV to panto, dance to Music Society.



THE STUDENTS' UNION

Led by students for students, the Students' Union is the heartbeat of student life. You will be part of a thriving community, with a great range of social and extra-curricular opportunities that reinforce connectivity; giving you a voice on what matters to you; working on your behalf to ensure the highest standards of teaching, learning and professional development are delivered; and helping you 'find your feet'.



“

Stranmillis is a place that thrives on community. I have made many lifelong friends and have had a serious amount of craic.

”

MATTHEW ORR



GET SOCIAL

The Students' Union organises a wide-ranging programme of events and activities throughout the year, from Fresher's Week to Stran Does Strictly, acoustic nights in Scholars to the Back to School Bop and Annual Ball.

MAKING A DIFFERENCE

Throughout the year, the Students' Union organises a host of events that provide opportunities for you to showcase your hidden talents to help raise funds for the Union's chosen charity partners and, at the same time, create memories you will cherish.

CLUBS AND SOCIETIES

Joining a club or society is the perfect chance for you to meet new people, develop your passion or discover a new skill. Whether you are keen on sports or horticulture; interested in music, media, film, drama or the Christian Union; there is a host of activities to get involved with, including the legendary Stran Panto!



LIVING ON CAMPUS

Stranmillis offers affordable student accommodation on campus – a supportive environment allowing you to make the most of your time as a Stran student. Stran Halls is a place where you will be part of a vibrant and welcoming student community:

- single or ensuite rooms
- breakfast 5 days a week (term-time)
- three course evening meal (Mon-Thu)
- lunch on Fridays
- 37 week contract
- all utility bills and WiFi included
- two free evening short courses



“The location of the campus is great with the city, shops and nightlife of Belfast within walking distance.”

ALADIN HASCIC



GREAT LOCATION

Our six halls of residence are located on campus in the heart of South Belfast. The Stranmillis campus is served by excellent transport links and is a short stroll from Belfast city centre, where you can explore the city's top attractions.

ROOMS

Make the most of modern, fully furnished, single occupancy accommodation with a choice of shared or ensuite bathrooms, with access to communal kitchen facilities and living spaces in each flat. If you and your friends want to be in the same flat, we will arrange it.

FOOD

Stran Halls is catered accommodation! If you are not a kitchen genius, forget about food shopping, cooking and washing up and instead spend your time establishing friendships, socialising, studying and relaxing - all key to happiness.



COMPLETE PACKAGE

Stran Halls' offers great value for money. Open to students from any University or College, Stran Halls is a unique, student living package - room, food, utilities, WiFi and a host of extras.



STRANMILLIS CAMPUS



5 Mins to
Belfast City
Centre

Belfast Bikes

Lagan River
Walks & Cycle Way

Stranmillis
University College
Entrance

Stranmillis Road

Refectory Building

Orchard Building

Stran House

Central Building

Main Building



STUDY AT STRAN



GLOBAL OPPORTUNITIES

A wealth of opportunities to
spend time studying abroad
or volunteering.



STUDENT SUPPORT

A broad range of
health, wellbeing,
academic and
personal support
services available.



EMPLOYABILITY

Stranmillis graduates
have the highest full-time
employment rate of any HEI
in Northern Ireland.



REIMAGINE LEARNING

Education has the power to transform everything and everyone. As such, educators are powerful agents for change. Educators are in the unique and privileged position to deliver knowledge, to identify and nurture talents and skills, to inspire curiosity and innovation and equip generations of people to collectively create change.



“

In-person lectures, practical sessions, tutorials and work-based placements provide a great variation in how you are taught.

”

RHYS DALE



EFFECTIVE

Effective educators are leaders, visionaries, communicators, collaborators, researchers, problem solvers, facilitators, persuaders, learners, advisers and risk takers, creative thinkers and role models - transferable skills that are developed on all our degree programmes.

LIFELONG

Education is not just about schools and teaching. It's lifelong and affects virtually every aspect of our daily lives - social, arts and culture, sport, health, wellbeing, environment, business and community. Our graduates are advocates for continuous lifelong learning and development.

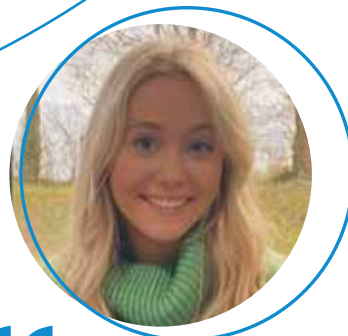
PASSIONATE

Be the difference. Whatever your passion or interest, our courses are designed to make you an effective educator and our graduates are making a difference globally.



TEACHING AND LEARNING

At Stran, you are part of a community of passionate educators whose research, scholarship and teaching is making an impact globally. Our teaching staff have a passion and desire to learn, to question, to innovate and to instil those same qualities in our students. Innovative thinking, pushing boundaries and tackling global issues such as academic underachievement and special educational needs are in our DNA. Our students, like our staff are inspired to be shapers of education rather than followers.

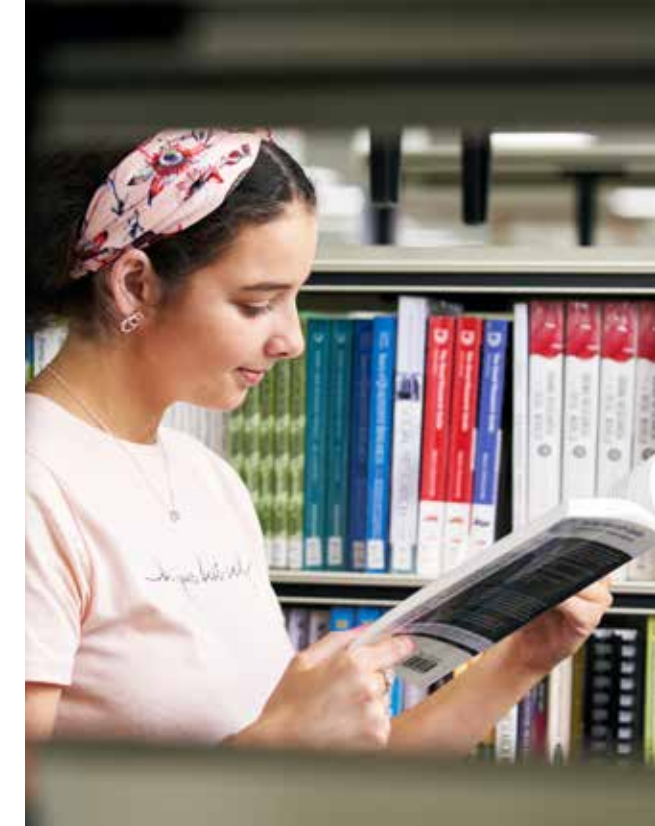


“

The tutors have been so helpful – they make time for you, get to know you and are there for you.

ABBIE REA

”



A DIFFERENT WAY OF LEARNING

When you start your degree, you will notice a big difference in the way you are taught and learn:

- lectures give you a foundation about your subject
- tutorials offer in-depth analysis of lecture information
- seminars, workshops and group projects allow for more intensive discussions
- practicals give you hands-on experience to develop subject-related skills
- professional placements hone your skills and knowledge
- self-directed independent study
- constructive feedback on assessment and learning



REFLECTIVE, CRITICAL THINKING

As shapers of education, you will be encouraged and supported to develop independent critical thinking and reflective analysis, with assessment not only on your academic performance, but also on the skills that employers value.





SHAPING YOUR FUTURE

Enhancing your employability is a key part of your Stranmillis experience. The transferable skills developed throughout your academic studies, together with the experience acquired from work-based professional placements, ensure that our graduates are highly sought after. The most recent Higher Education Statistics Agency's Graduate Outcome survey showed that Stranmillis University College graduates have the highest full-time employment rate of any Higher Education Institution in Northern Ireland.



“

Insight placement is a great way of seeing what other opportunities my degree could open.

”

EMMA EDWARDS



WORK-BASED PLACEMENTS

An extensive programme of work-based professional placements lies at the heart of all of our courses, providing you with practical, hands on experience in a range of relevant workplace settings. To explore a broader career outlook, our Initial Teacher Education students, in addition to their school-based placements, also undertake an additional 'insight' placement with one of our 250+ partner organisations.

DEGREE ENHANCEMENT

To help our students stand out from the crowd, our Degree Enhancement programme is designed to provide a range of opportunities to enhance your skill set. These include optional short courses and awards, community and in-college volunteering opportunities and activities in areas relevant to your chosen career path.



VOLUNTEERING

Stranmillis has developed close ties with a number of education-related charities, such as Fields of Life and Saphara, with student teams volunteering on projects and initiatives in Uganda and India. Numerous other volunteering opportunities are also available.



A GLOBAL OUTLOOK

At Stranmillis, you will have opportunities to broaden your horizons and develop an international perspective and global outlook on education. The chance to learn alongside students from different countries, to spend time living and studying abroad; and to get involved in international volunteering initiatives adds to your learning experience.



“

One of the best experiences you can have; amazing stories with amazing people.

DENNIS ZAHN

”

STUDY ABROAD

Studying abroad is an enriching experience both academically and personally. All of our students have the opportunity to study at one of our 30+ partner institutions worldwide; exploring and sharing different cultures, improving their language skills and acquiring new perspectives on teaching and learning.

Benefits of study abroad

- enjoy the opportunity of a lifetime
- experience a different education style, gaining a new perspective on your subject area
- enhance your future employability and broaden your global network
- personal development, independence and life experience
- improve your language skills and cultural awareness
- make lifelong friends from around the world



WORLDWIDE COMMUNITY

With over 30 university partners worldwide, the College is committed to making a global impact. Through our research and scholarship activities, our outgoing and incoming student and staff mobility programmes and our international development initiatives, the College is a globally connected community of learners who learn with and from each other.





WORLD-CLASS STUDY FACILITIES

The College is continually investing in creating and maintaining world-class teaching and learning spaces. Our virtual learning environment, interactive teaching technologies, library and study resources, along with integrated communication systems, are designed to help you succeed and ensure you have everything you need for formal, group and independent study.



“

The art facilities at Stran are fantastic and we get the opportunity to try clay, silk, painting and pastels.

ERIN PARK

”

THE RIGHT TOOLS AND TECHNOLOGIES

Whether it's for formal teaching, personal study or off-campus study, our virtual learning environment (VLE) provides you with access to all of the information you need for your studies – lecture notes, video lessons, handouts, assignment details, submissions and communication with your lecturers.

SPACES TO LEARN

Whether you need a quiet place for independent study or a large space for group assignments, discussions and study, you have access to a wide range of study areas and learning zones, all equipped with the learning resources, research tools, WiFi and IT support you need.

SPECIALIST FACILITIES

Whatever degree programme you are on, you will find a superb range of specialist facilities – sport and health, science labs, technology and design workshops, music suites, drama theatre, early years centre and a host of specialised art and creative studios.

THE HEART OF STUDY

Our highly experienced library team offer outstanding levels of service, which is consistently reflected in the very high scores it gets in the National Student Survey. With all the books, periodicals, journals and research tools you need, the Library is the best place to start and complete assignments, projects or dissertation.





YOU ARE NOT ALONE

We want you to achieve your potential and enjoy student life at Stranmillis. From the moment you begin your studies, you will be championed by a dedicated team of academics, who are experts in their field. You will also have access to individual learning support to help you take control of your learning and develop confidence.



“

Lecturers are very approachable and always there to help with any concerns that arise.

ANDREW GREER

”



TAUGHT BY EXPERTS

You will be taught by a team of academic experts who are world leaders in their field of specialism. Discover their passion and be inspired by their enthusiasm.

PERSONAL TUTOR

Your personal tutor provides one-to-one academic support throughout your studies. They will take time to get to know you, helping you tackle practical issues that you may need support with and assist with personal and pastoral concerns.

PEER MENTORS

Who better to help you settle in to college life than a current student already studying on a similar degree programme? Your peer mentor, who is there to support your move to higher education, has been where you are and can help your transition to university life.

OUR STUDENTS RATE US

Our ratings for student satisfaction in the independent National Student Survey (NSS) are an indicator of the quality and excellence of the teaching and support you receive at Stranmillis. In the most recent NSS, the College was ranked 1st in Northern Ireland for student satisfaction.



SUPPORT TAILORED TO YOU

No two students are the same and our Student Support team are on hand to offer personalised support throughout your studies. The College succeeds when you succeed and we strive to enable every student to reach their full potential. Our team of friendly, experienced staff are available to help with a broad range of health, wellbeing, academic and personal support services to ensure you are equipped and fully supported to succeed. You may never need these services, but if you do, there is help available.



“

The Student Support Centre
has really helped me
transition into university life!

”

AMY MCCLOY



STUDENT SUPPORT SERVICES

The Student Support team offer a broad range of support services including:

- Disability Support
- Communication Support Centre
- Counselling and Wellbeing Services
- Occupational Health and referral to specialised support
- Laptop Loan Scheme
- Student Finance guidance and support, including money matters, bursaries and scholarships.

COMMUNICATIONS SKILLS CENTRE

A free service available to all students, the Centre provides individual and group tuition to help and support students develop their writing and communication skills. The Centre is staffed by trained peer tutors.

STUDENTS WITH DISABILITIES

Stranmillis is committed to inclusive study so that everyone can participate in student life. Our Disability Support Service offers guidance and signposting to relevant internal and external support and resources for students with a disability or specific learning difficulty.

CHAPLAINCY

The College has a strong ethos of diversity, mutual understanding and pastoral care, and our chaplains welcome and provide pastoral support to students from all faiths, beliefs and backgrounds.



READY TO RUN

Our Careers Service helps, guides and supports you throughout your degree and for two years after graduation. Our aim is to equip you with the skills, confidence and work-based experience to succeed in the world of work. You will have ongoing opportunities to meet with prospective employers at a range of College-organised careers fairs and events.



“

There are fewer noble privileges than being trusted as an educator and role model for future generations.

STEWART KILLOUGH

”



THE FINISHING LINE

Think of a degree from Stranmillis as a career foundation. To be career-ready when you graduate, you need a course that is built around the specific requirements of your chosen path, and our focus is on developing the qualities, skills and expertise that employers are looking for.

CAREERS SUPPORT

Alongside the development of the skills, expertise and experience to succeed, our Careers team also provides:

- support in exploring and developing your career plan
- guidance on searching for a job, assessments and selection procedures
- masterclasses on writing CVs and attending interviews and assessment centres
- career support, with a tailored support service for international students and students with disabilities.

GLOBAL EMPLOYABILITY

Enhancing employability skills is a common thread interwoven throughout the curriculum for all our courses. Department for the Economy figures show that education graduates have one of the highest rates of graduate employment, surpassed only by Medicine, Dentistry and allied subjects. A degree from Stranmillis University College opens up a world of opportunities, with graduates taking up employment around the globe.





WORLD LEADER IN RESEARCH

Education affects everyone and has the power to shape and transform lives. For the past century, our research and scholarship work has helped shape educational policy and practice locally, nationally and internationally. In the latest Research Excellence Framework (Ref 2021), 78% of our research outputs were deemed to be recognised internationally. The College's research and scholarship is focused on equipping tomorrow's educators with the tools to unlock and maximise the potential of every young person.

The immediate impact of our research is on our own teaching; what we teach, where we teach and how we teach. This means that your teaching and learning is built on leading edge educational thinking. Our influence extends far beyond the gates of the College and we are recognised as a leader in critical areas such as:

- Educational Underachievement
- Playful Learning
- Early Years Education
- Special Educational Needs
- Pupil Wellbeing
- Pastoral Care



EXPLORE OUR COURSES

Stranmillis University College offers the following full-time and part-time undergraduate and foundation degree courses:

INITIAL TEACHER EDUCATION

BEd (Hons) Post-primary Business and Enterprise	P36
BEd (Hons) Post-primary Mathematics	P38
BEd (Hons) Post-primary Religious Studies	P40
BEd (Hons) Post-primary Technology and Design	P42
BEd (Hons) Primary	P48

EARLY CHILDHOOD STUDIES

BA (Hons) Early Childhood Studies (Full-time)	P52
BA (Hons) Early Childhood Studies (Part-time)	P54
Foundation Degree Early Childhood Studies	P56

PHYSICAL EDUCATION AND SPORT

BSc (Hons) Physical Education and Sport	P60
Foundation Degree Physical Education and Sport	P62

UNDERGRADUATE ENTRANCE REQUIREMENTS 2024

Programme	UCAS Code	A-Level Requirements	Subject Requirements	GCSE Requirements
BEd (Hons) Primary	X120	AAB	No subject requirement	English, Mathematics and Science grade C
BEd (Hons) Post-primary Business and Enterprise	N1X3	BBC	At least one from Business Studies, Economics or Accounting	English and Mathematics grade C
BEd (Hons) Post-primary Mathematics	XG10	BCC	Mathematics	English and Mathematics grade C
BEd (Hons) Post-primary Religious Studies	XVC6	ABB	Religious Studies	English and Mathematics grade C
BEd (Hons) Post-primary Technology and Design	XW12	BCC	At least one from Technology and Design, Computing or Physics	English and Mathematics grade C
BA (Hons) Early Childhood Studies	X310	BBB	No subject requirement	English and Mathematics grade C
Foundation Degree Early Childhood Studies	LX53	CC	No subject requirement	English and Mathematics grade C
BSc (Hons) Physical Education and Sport	LL34	BCC	At least one from Sports Studies, Physical Education, Biology, Leisure Studies, Home Economics or Health and Social Care	English, Mathematics and Science grade C
Foundation Degree Physical Education and Sport	52L7	CC	At least one from Sports Studies, Physical Education, Biology, Leisure Studies, Home Economics or Health and Social Care	English and Mathematics grade C

Programme	Access Course Requirements	Irish Leaving Certificate Requirements
BEd (Hons) Primary	70% Average in Level 3 modules.	H2 H3 H3 H3 H3 H3. Minimum O4 required in Maths, English and a Science.
BEd (Hons) Post-primary Business and Enterprise	65% Average in Level 3 modules, to include 65% in a Business related module.	H3 H3 H3 H3 H4 to include Business, Economics or Accounting. Minimum O4 required in Maths and English.
BEd (Hons) Post-primary Mathematics	65% Average in Level 3 modules in a Mathematics based Access course.	H3 H3 H3 H3 H4 to include Mathematics. Minimum O4 required in English.
BEd (Hons) Post-primary Religious Studies	65% Average in Level 3 modules to include at least one Humanities related module.	H2 H3 H3 H3 H3 to include Religious Studies. Minimum O4 required in Maths and English.
BEd (Hons) Post-primary Technology and Design	65% Average in Level 3 modules in a Technology, Engineering or Computing Access course.	H3 H3 H3 H3 H4 to include either Technology and Design, Computing or Physics. Minimum O4 required in Maths and English.
BA (Hons) Early Childhood Studies	65% Average in Level 3 modules.	H3 H3 H3 H3 H4 H4. Minimum O4 required in Maths and English.
Foundation Degree Early Childhood Studies	55% Average in Level 3 modules.	H5 H5 H5 H5 H5. Minimum O4 required in Maths and English.
BSc (Hons) Physical Education and Sport	65% Average in Level 3 modules in Access course containing Sport/Health/Biology related modules.	H3 H3 H3 H4 H4 to include Biology. Minimum O4 required in Maths and English.
Foundation Degree Physical Education and Sport	55% Average in Level 3 modules in Access course containing Sport/Health/Biology related modules.	H5 H5 H5 H5 to include Biology. Minimum O4 required in Maths and English.

*Applicants studying BTEC Subsidiary Diploma/National Extended Certificate/OCR Cambridge Technical Introductory Diploma/Extended Certificate Level 3 in lieu of A Levels should note the below equivalencies. Please note that the below is stated in terms of an overall grade.

A Level Grade	BTEC (QCF) Subsidiary Diploma/OCR Cambridge Technical Introductory Diploma/Extended Certificate – Level 3/ BTEC (RQF) National Extended Certificate -Level 3 Equivalent
A	Distinction*
B	Distinction
C	Merit



INITIAL TEACHER EDUCATION

How do children learn and develop? How do you unlock and maximise the potential of every child and provide them with the best start in life? As a teacher, you are in the unique and privileged position to shape and change the lives of young people, families and communities. Effective teachers are lifelong learners, leaders, communicators, collaborators, creative thinkers, problem solvers and role models. Our Initial Teacher Education (ITE) programmes will not only teach you how to teach, but will equip you with the skills, knowledge and experience to help you inspire young people to maximise their potential.

PROFESSIONAL ACCREDITATION

All of our Initial Teacher Education degree programmes are accredited by the General Teaching Council (NI), with successful completion of a Bachelor of Education degree leading to Qualified Teacher Status certification, allowing you to teach in primary and secondary schools in Northern Ireland.

HOW WILL I STUDY?

On our ITE programmes, in addition to lectures, tutorials, workshops and individual or group projects, you will undertake an extensive programme of school-based professional placements. In year 3, you will also have the opportunity to spend a semester studying abroad at one of our partner universities worldwide. In year 4, you will conduct research and complete a dissertation on a topic that you are passionate about.

PROFESSIONAL PLACEMENTS

In each year of your degree programme, you will spend 7-9 weeks in a range of educational settings. In your final year, you will also undertake a 2-week insight placement in an alternative education setting.

STUDY ABROAD

In Year 3, you will have the opportunity to spend a semester studying and undertaking professional practice at one of our international partner universities in Europe, Asia or North America.

WHO WILL BE TEACHING ME?

In college and on your school-based professional placements, you will be taught, assessed and supported by an exceptional team of internationally recognised, research-informed and experienced practitioners. As a small, specialist institution, you get to know your tutors and they get to know and support you to become a shaper of education.

HOW WILL I BE ASSESSED?

A variety of assessment methods are used, including critically reflective essays, individual and group projects and presentations, e-portfolios, formal examinations, assessment on placement and final dissertation.

CAREER PROSPECTS

The most recent Higher Education Statistics Agency Graduate Outcome survey shows that Stranmillis University College graduates have the highest levels of full-time employment of any higher education institution in NI. Outside of medicine and related subjects, education graduates have the highest employment levels. Although most BEd graduates pursue a career in teaching, the transferable skills open up career opportunities in many other fields including youth services, general management, social and community work and local government.



PRIMARY PATHWAY

On the Primary pathway, in Years 1-3, in addition to educational studies and curriculum studies, you will also study, in-depth, a specialist area of learning from the curriculum: Art and Design; Drama; English and Literacy; Geography and History; Maths and Numeracy; Music; Physical Education; Religious Education; or Science and Technology.

POST-PRIMARY PATHWAYS

Our BEd Post-primary programme is highly flexible, giving you a very broad choice of subject combinations, allowing you to make the most of your academic strengths and interests. In addition to choosing one of the four main subject areas, you will also choose a subsidiary subject, which you can normally teach to Key Stage 3 or GCSE level.

MAIN SUBJECT	
Business & Enterprise	Mathematics
Religious Studies	Technology & Design
SUBSIDIARY SUBJECTS	
Computing	English
Mathematics	Physical Education
Religious Studies	KS3 Science



BEd (HONS) POST-PRIMARY: **BUSINESS AND ENTERPRISE**

Business and Enterprise is a stimulating and challenging area of study which affords you the opportunity to study a range of contemporary business topics. Throughout the course, you will develop effective teaching methods for business-related subjects which are currently offered at Key Stage 4 and post-16 level. You will improve your critical awareness of the dynamic nature of the business world and the issues faced by changing practices and developments. You will also extend your knowledge of a range of entrepreneurial businesses and practices at a local and national level and the need to adopt an entrepreneurial attitude.



“

As well as the sausage rolls in Betty's, fantastic friends, incredible placements and the lecturers make the course special.

DAVID LENNOX

”

BEd (HONS) POST-PRIMARY: **BUSINESS AND ENTERPRISE**



EDUCATION STUDIES

Education Studies, a core element of all initial teacher education pathways, is a constantly changing, diverse and exciting field of study, exploring psychological, social, philosophical, historical and contemporary aspects of education. Typical modules include:

- Education Studies
- Children with Special and Additional Needs
- Learning and Assessment in Diverse Classrooms
- Education Research

MAIN SUBJECT

Typical subject specific modules studied on the Business and Enterprise pathway include:

- Marketing
- Financial Accounting
- Managing Projects
- Managing People
- Operations Management
- General Business Decision Making

SUBSIDIARY SUBJECT

Alongside your Education Studies, Professional Practice and Business and Enterprise modules, you will also study a subsidiary subject. Please see pages 44-47 for information on the subsidiary subject options.

PROFESSIONAL PRACTICE

Personal and professional learning is a core element of the degree, with an extensive programme of professional placements allowing you to gain experience in a range of formal (primary and post-primary schools or a FE college) and alternative education settings.

A-level Requirements: BBC

For specific subject requirements and alternative qualifications see pages 32-33.

Duration: 4 years

UCAS Code: N1X3



BEd (HONS) POST-PRIMARY: MATHEMATICS

On the Mathematics pathway, you will learn how to share your enjoyment of Mathematics with future learning leaders. If you like problem solving and logical thinking, you will discover the relevance of mathematics in everyday situations. Mathematics is presented as a dynamic subject with an emphasis on flexibility of mind and imaginative teaching methods.



“ I get to teach, not just Maths, but another subsidiary subject. I enjoyed a study abroad experience in Sweden – a highlight of my time at Stran. ”
CHLOE FARQUHAR

BEd (HONS) POST-PRIMARY: MATHEMATICS



EDUCATION STUDIES

Education Studies, a core element of all initial teacher education pathways, is a constantly changing, diverse and exciting subject of study, exploring psychological, social, philosophical, historical and contemporary aspects of education. Typical modules include:

- Education Studies
- Children with Special and Additional Needs
- Learning and Assessment in Diverse Classrooms
- Education Research

MAIN SUBJECT

Typical subject specific modules studied on the Mathematics pathway include:

- Algebra for Teaching
- Applied Mathematics
- Topics in Teaching Mathematics
- Mathematics Project

SUBSIDIARY SUBJECT

Alongside your Education Studies and Mathematics modules, you will study a subsidiary subject. Please refer to pages 44-47 for information on the available subsidiary subject options.

PROFESSIONAL PRACTICE

Personal and professional learning is a core element of the degree programme, with an extensive professional placements element allowing you to gain experience in a range of formal (primary and post-primary schools or a FE college) and alternative education settings.

A-level Requirements: BCC

For specific subject requirements and alternative qualifications see pages 32-33.

Duration: 4 years

UCAS Code: XG10



BEd (HONS) POST-PRIMARY: RELIGIOUS STUDIES

Throughout the course, emphasis is placed on inclusion, respect for diversity and the development of critical openness towards a range of religious beliefs and practices. You will develop a deepening personal awareness and understanding of religion and religious issues, equipping you with the tools to become effective educators of Religious Education. You will learn how to teach world religions and consider the contemporary debates relating to Religious Education on the post-primary curriculum. Students on the course come from a range of religious backgrounds or of no religion.



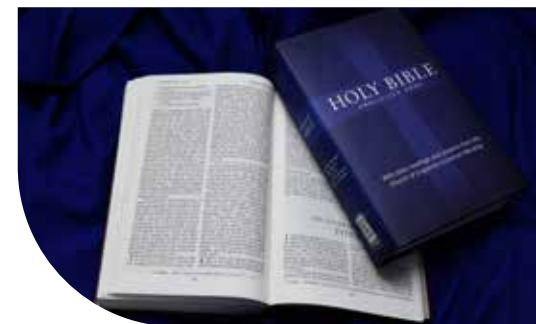
“

Learning from other students and hearing their opinions on deep theological matters, stretches your thinking.

DANIEL HAMILTON

”

BEd (HONS) POST-PRIMARY: RELIGIOUS STUDIES



EDUCATION STUDIES

Education Studies, a core element of all initial teacher education pathways, is a constantly changing, diverse and exciting subject of study, exploring psychological, social, philosophical, historical and contemporary aspects of education. Typical modules include:

- Introduction to Education Studies
- Children with Special and Additional Needs
- Learning and Assessment in Diverse Classrooms
- Education Research

MAIN SUBJECT

Typical subject specific modules studied on the Religious Studies pathway include:

- Biblical Studies
- Eastern Religions
- Early Church History
- Theology
- Philosophy of Religion and Ethics

SUBSIDIARY SUBJECT

Alongside your Education Studies and Religious Studies modules, you will study a subsidiary subject. Please refer to pages 44-47 for information on the available subsidiary subject options.

PROFESSIONAL PRACTICE

Personal and professional learning is a core element of the degree programme, with an extensive professional placements element allowing you to gain experience in a range of formal (primary and post-primary schools or a FE college) and alternative education settings.

A-level Requirements: ABB

For specific subject requirements and alternative qualifications see pages 32-33.

Duration: 4 years

UCAS Code: XVC6

BEd (HONS) POST-PRIMARY: TECHNOLOGY AND DESIGN

On the Technology and Design course you will use new technologies and modern ways of thinking and learning to enable you to become a learning leader and discover how to integrate new technologies and raise awareness of the implications of technology. The use of computers as a design tool is encouraged, and you will have access to up-to-date CNC routers, lathes and milling machines, laser cutters, drones, robotics and 3D printers. As an adaptable individual, you will develop new skills to teach others in an innovative way, including manufacturing, systems, graphics and CAD/CAM.



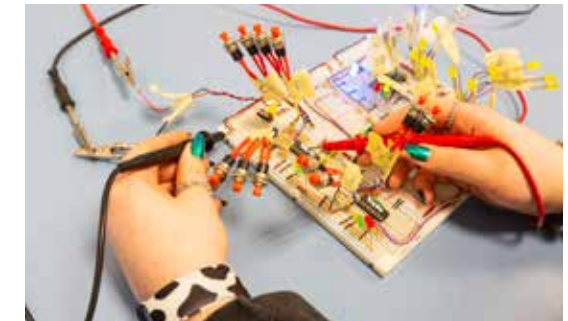
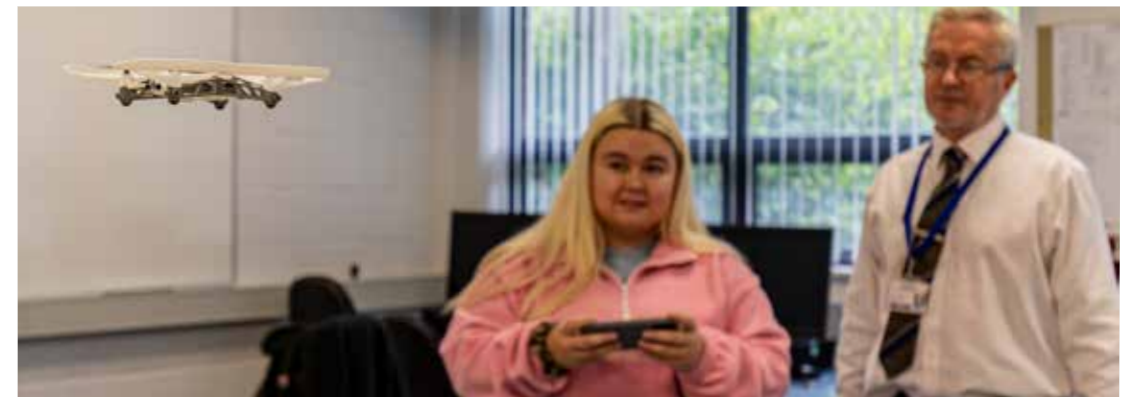
“

The practical classes, the course content and the challenges they bring, along with an informal learning environment make it really enjoyable.

MATTHEW ROBINSON

”

BEd (HONS) POST-PRIMARY: **TECHNOLOGY AND DESIGN**



EDUCATION STUDIES

Education Studies, a core element of all initial teacher education pathways, is a constantly changing, diverse and exciting subject of study, exploring psychological, social, philosophical, historical and contemporary aspects of education. Typical modules include:

- Education Studies
- Children with Special and Additional Needs
- Learning and Assessment in Diverse Classrooms
- Education Research

MAIN SUBJECT

Typical subject specific modules studied on the Technology and Design pathway include:

- Manufacturing, Materials and Processes
- Systems
- Technology and Design Education: Computer Aided Design and Manufacture
- Advanced Manufacturing, Materials and Processes
- Technology and Design Education: Product Analysis, Design and Manufacture
- Systems Design: Mechatronics

SUBSIDIARY SUBJECT

Alongside your Education Studies and Technology and Design modules, you will study a subsidiary subject. Please refer to pages 44-47 for information on the available subsidiary subject options.

PROFESSIONAL PRACTICE

Personal and professional learning is a core element of the degree programme, with an extensive professional placements element allowing you to gain experience in a range of formal (primary and post-primary schools or a FE college) and alternative education settings.

A-level Requirements: BCC

For specific subject requirements and alternative qualifications see pages 32-33.

Duration: 4 years

UCAS Code: XW12



POST-PRIMARY SUBSIDIARY SUBJECTS

Our BEd (Hons) Post-primary programme is highly flexible, giving you a very broad choice of subject combinations, allowing you to make the most of your academic strengths and interests. In addition to choosing one of the four main subject areas, you will also choose a subsidiary subject, which you can normally teach to Key Stage 3 or GCSE level.

- Computer Science
- English
- KS3 Science
- Mathematics
- Physical Education
- Religious Studies

POST-PRIMARY SUBSIDIARY SUBJECTS

COMPUTER SCIENCE

Computing is rapidly increasing in significance and relevance for all our schools and our students. Our Computing subsidiary subject students engage meaningfully with children from as young as 8 years old, so that coding and algorithmic thinking is delivered from an early age and development is thus natural and ongoing. All children deserve the opportunity to become creators of software to enhance problem solving, creativity and confidence rather than simply being passive users of the technologies they use every day. To support the ever-growing IT sector, we are being encouraged to train our teachers to enable them to engage with students at different ages, stages and abilities so that they can inspire, enthuse and develop the next generation of young technologists. If you have an interest in IT, and are keen to learn new skills, choosing Computer Science as your subsidiary subject opens a world of opportunities.



ENGLISH

English is a keystone of the Northern Ireland Curriculum and students choose it as a subsidiary subject to broaden their employment opportunities and enable them to teach English to GCSE. English as a subsidiary subject has two main elements: English Literature, where you will study a range of texts from poetry, prose and drama together with a practical drama element where the students are taken through aspects of teaching drama up to KS4; and the application of English where you will explore the pedagogy of teaching English Language and English Literature. During this element of the course students hear from experienced practitioners alongside organisations promoting English and Literacy within schools. Students also take part in Fighting Words workshops to develop their own skills as writers. During the course, students also prepare and deliver reading workshops to pupils from visiting schools.



KS3 SCIENCE

The Science subsidiary programme prepares students to teach all three sciences to Key Stage 3 (Year 10), considerably enhancing your employability as a graduate teacher. The programme is designed to extend your subject knowledge of Biology, Physics and Chemistry and nurture a passion for discovery and science enquiry. Classes consist of seminars and hands-on activities which develop your practical skills and your ability to plan and manage laboratory work in junior science. Our teaching is informed by the latest theories on science education and employs student co-teaching and the latest video technology to ensure you are best prepared for your teaching career.



MATHEMATICS

Many of our students choose to take subsidiary mathematics as their second subject. Regardless of your main subject, you may still have that burning interest in mathematics from your GCSE and A-level studies and wish to use this to develop your skills in teaching mathematics as your second subject. Many schools will look for teachers who can teach lessons in mathematics to KS3 and KS4 alongside their main subject area, and this subsidiary choice will equip you to do so. The level of mathematics studied will advance and deepen your understanding of mathematical concepts. Equally importantly, it will equip and empower you to teach mathematics lessons, ultimately making you more employable in an increasingly competitive job market.



POST-PRIMARY SUBSIDIARY SUBJECTS

PHYSICAL EDUCATION

Students studying on the BEd Post-primary programme have the opportunity to take Physical Education (PE) as a subsidiary or second subject. Students taking this option study a module in PE in years 1, 2 and 3 and will also be expected to teach PE during their school-based work placement each year. The modular content of the subsidiary PE programme covers a range of theory, typically including child development, philosophy of PE, curriculum studies, motor skill learning and diversity and inclusion. The practical areas have a clear focus on developing competence and confidence to teach in a range of activities which typically include, games, athletics, health-related physical activity, swimming, gymnastics and dance. There are no formal qualification requirements to study this programme, although an interest in PE is considered essential.



RELIGIOUS STUDIES

This subject helps prepare students to teach religious studies and religious education up to GCSE level, whilst exploring some of life's big questions and the moral choices humanity is facing in today's increasingly complex world - What does it mean to be human? Does science make more sense than religion? Who is Jesus? Why is there pain and suffering in the world? In Years 1 and 2, you will undertake two introductory courses in Biblical Studies. The material covered includes the origins and beliefs of Christianity and Judaism, biblical theology and study the life of Jesus as described in the Gospels. In Year 3, you will take a course in Philosophy and Christian Ethics.





BEd (HONS) PRIMARY

On the BEd (Hons) Primary degree programme, Education Studies, Curriculum Studies and Professional Practice provide the foundation for what you will be studying, providing an overview of education theory, policy and practice. You will also choose a specific area of specialism to study in more depth.



“The range of hands-on opportunities allows you to put your knowledge into practice.”
BETHANY HUGHES

BEd (HONS) PRIMARY



EDUCATION STUDIES

Education Studies, a core element of all initial teacher education pathways, is a constantly changing, diverse and exciting subject, exploring psychological, social, philosophical, historical and contemporary aspects of education. Typical modules include:

- Education Research
- Children with Special and Additional Needs
- Learning and Assessment in Diverse Classrooms.

CURRICULUM STUDIES

Curriculum Studies provides the necessary knowledge and understanding of all areas of the Northern Ireland Curriculum, helping to develop your intellectual, practical and transferable skills. Typical modules include The Arts, Language and Literacy, STEM subjects, Physical Education, Religious Education, Personal Development and Mutual Understanding, and The World Around Us.

AREA OF SPECIALISM

In Years 1-3, you will also study, in-depth, one of the specialist areas of learning from the following: Art and Design; Drama; English and Literacy; Geography and History; Maths and Numeracy; Music; Physical Education; Religious Education; or Science and Technology.

PROFESSIONAL PRACTICE

Personal and professional learning is a critical element of the degree programme, with an extensive programme of professional school-based placements allowing you to gain experience in Foundation, Key Stage 1, Key Stage 2 and alternative education settings.

A-level Requirements: AAB

For specific subject requirements and alternative qualifications see pages 32-33.

Duration: 4 years

UCAS Code: X120



EARLY CHILDHOOD STUDIES

The Early Childhood Studies programme is based on the concept of 'Educare'. The course provides a broad understanding of how young children think, learn and develop. It aims to investigate and advance a multi-professional approach to early childhood education and care services in Northern Ireland and beyond. The programme has been designed, in partnership with professionals across the sector, to meet the training needs of current and future practitioners.

PATHWAYS

There are three available pathways on the Early Childhood Studies programme:

- BA (Hons) Early Childhood Studies (full-time)
- BA (Hons) Early Childhood Studies (part-time)
- Foundation Degree Early Childhood Studies

EARLY CHILDHOOD STUDIES



HOW WILL I STUDY?

In addition to lectures, tutorials, workshops and individual or group projects, a substantial part of the teaching and learning process is delivered through your work-based placements. In light of this focus on the development of practice-based skills, all students are required to gain clearance under AccessNI protocols and/or Trust clearance procedures, during their first year of study and, subsequently, during their third year of study.

WHO WILL BE TEACHING ME?

On the Early Childhood Studies programmes, you will be taught, assessed and supported by an exceptional team of experienced practitioners, both in College and whilst on placement.

HOW WILL I BE ASSESSED?

A variety of assessment methods are used, including critically reflective essays, individual

and group projects and presentations, written examinations, assessment on placement and a final dissertation project.

PROFESSIONAL PRACTICE

Personal and professional experience placements with children aged between 0 and 8 years are a core element of all of our Early Childhood Studies pathways. Students on all pathways are required to participate in this structured programme of placement activities.

CAREER PROSPECTS

An Early Childhood Studies degree forms a sound basis for career progression in the statutory, voluntary and private sectors of early years provision, including early years organisations, nursery and primary schools, centres associated with the Early Years Organisation, crèches, parent and toddler groups and childcare and family centres.



BA (HONS) EARLY CHILDHOOD STUDIES (FULL-TIME)

The full-time Early Childhood Studies programme covers three core themes - Understanding the Child, The Child in the Learning Context and The Child in the Family and Community. The course takes account of the latest developments within the field of early childhood and reflects the multi-professional and multi-disciplinary nature of contemporary early childhood services.



“

The course allows you to develop your understanding of how children learn and develop holistically in ways you may not have considered.

”

DAVID BURKE

BA(HONS) **EARLY CHILDHOOD STUDIES** (FULL-TIME)



TYPICAL COURSE MODULES

Examples of the type of modules studied on the course include:

- Children's Learning Intentions
- Social and Developmental Learning
- Childhood in Society
- Children's Health and Wellbeing
- Partnership with Children and Families
- Children in the Early Years Environment
- Management, Leadership and Professionalism
- Early Years Curriculum (3-8 Years)
- Curiosity and the Child.

PROFESSIONAL PRACTICE

Personal and professional learning is a core element of the degree programme and you will have the opportunity to gain experience in a variety of early

years settings with children aged between 0 and 8 years. This will involve a mixture of weekly day visits and block placement opportunities. In Year 1 and Year 2, these placements will be located within a 20-mile radius of the University College. In Year 3, no geographical restrictions apply.

STUDY ABROAD

In Year 2, you will have the opportunity to spend a semester studying and undertaking professional practice at one of our international partner universities.

A-level Requirements: BBB

For specific subject requirements and alternative qualifications see pages 32-33.

Duration: 3 years

UCAS Code: X310

BA (HONS) EARLY CHILDHOOD STUDIES (PART-TIME)

The 4 year part-time degree is ideal for those already working in the sector looking for a degree programme that works around their individual circumstances. The part-time pathway covers all of the material on the full-time programme. Before commencing, students must have arrangements in place for their professional placements to be fulfilled through their employment, or have negotiated access through volunteering. The part-time programme is offered at Stranmillis and South West College (Omagh campus). In addition, for those who already possess qualifications benchmarked at Level V [QCF framework] onwards, the opportunity exists to study the programme at Southern Regional College (Newry campus).



“

I find working alongside studying part-time allows me to gain practical experience – a real advantage.

MARCUS FOSTER

”

BA(HONS) **EARLY CHILDHOOD STUDIES** (PART-TIME)



TYPICAL COURSE MODULES

Examples of the type of modules studied on the course include:

- Children's Learning Intentions
- Social and Developmental Learning
- Childhood in Society
- Children's Health and Wellbeing
- Partnership with Children and Families
- Children in the Early Years Environment
- Management, Leadership and Professionalism
- Early Years Curriculum (3-8 Years)
- Curiosity and the Child.

PROFESSIONAL PRACTICE

During your studies, you will be expected to maintain access to young children (aged between 0 and 8 years) in a structured setting through employment or negotiated access through volunteering. It is advised that this should be for a period of no less than 7–10 hours per week.

STUDY ABROAD

You will have the opportunity to spend a semester studying and undertaking professional practice at one of our international partner universities.

A-level Requirements: BBB

For specific subject requirements and alternative qualifications see pages 32-33.

Duration: 4 years

UCAS Code: Apply direct to SUC

FOUNDATION DEGREE EARLY CHILDHOOD STUDIES

The Foundation Degree is designed to provide you with the specialist knowledge and understanding for working with young children aged between 0 and 8 years, focussing on the key theories, concepts and strategies for working with this age group in a variety of Early Years settings.

LOCATIONS

This course can be studied full-time (2 years) or part-time (3 years) depending on location:

- Belfast Metropolitan College
- North West Regional College (Londonderry/Derry)
- Northern Regional College (Ballymena and Newtownabbey)
- South Eastern Regional College (Lisburn)
- South West College (Omagh)
- Southern Regional College (Newry)

FOUNDATION DEGREE **EARLY CHILDHOOD STUDIES**



TYPICAL COURSE MODULES

Examples of the type of modules studied on the course include:

- Child Development
- Acquisition of Language and Communication Skills
- Learning through Play
- Safeguarding Children
- Developing Skills and Strategies for Managing Children's Behaviour
- Working with Children with Additional Needs
- Anti-Discriminatory Practice and Inclusion in the Early Years Environment
- Working with Babies 0-3 Years

PROFESSIONAL PLACEMENTS

A varied programme of professional placements complement and support your classroom learning on the Foundation Degree.

PROGRESSION

Graduates who achieve the desired academic standard may be eligible for progression to Year 2 of the BA (Hons) Early Childhood Studies degree (full-time or part-time) at Stranmillis University College, South West College (Omagh campus) or Southern Regional College (Newry campus).

A-level Requirements: CC

For specific subject requirements and alternative qualifications see pages 32-33.

Duration: 2/3 years

UCAS Code: LX53



PHYSICAL EDUCATION AND SPORT

Improving physical activity rates, active lifestyles and health promotion are strategic priorities that impact the social and economic wellbeing of communities and societies as a whole. A multidisciplinary programme, the Physical Education and Sport programme is aimed at those looking for a rewarding career working with young people and wider communities in this growing and important sector. In addition to a wide range of practical activities, the course explores the sociological, psychological and scientific concepts underpinning physical education, health, nutrition, physical activity and sport.

PATHWAYS

There are two pathways on the Physical Education and Sport programme:

- BSc (Hons) Physical Education and Sport
- Foundation Degree Physical Education and Sport

PHYSICAL EDUCATION AND SPORT



HOW WILL I STUDY?

In addition to lectures, tutorials, workshops, practical physical education sessions and individual or group projects, you will undertake a programme of relevant work placement.

WHO WILL BE TEACHING ME?

In college and on your professional placements, you will be taught, assessed and supported by an exceptional team including internationally recognised, research-informed and experienced practitioners.

HOW WILL I BE ASSESSED?

A variety of assessment methods are used, including critically reflective essays; individual and group projects and presentations; written examinations; assessment on placement; and a final dissertation.

PROFESSIONAL PRACTICE

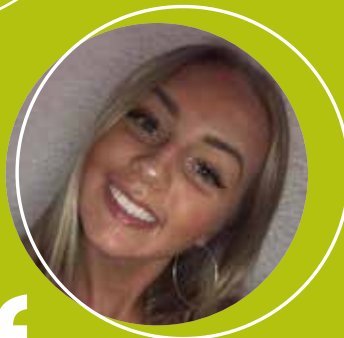
Personal and professional learning is a core element of both pathways and, alongside your studies, you will undertake a programme of relevant work placements.

CAREER PROSPECTS

The transferable skills developed on the course enable students to pursue careers in a wide range of sectors and settings including entry onto a PGCE course to become a teacher (Primary and Post-primary PE), Health Promotion, Sport Development, Community Development, Educational Centres and Welfare, Youth Services and Coaching.

BSc (HONS) PHYSICAL EDUCATION AND SPORT

The BSc (Hons) Physical Education and Sport degree is an innovative, multidisciplinary course which seeks to enhance the skills and expertise of those wishing to further their careers within the areas of health promotion, education or a range of opportunities in the field of sport. The key areas studied include health promotion, psychology of physical activity, exercise physiology, nutrition, sports development and practical physical education.



“

The tutors push you to the best of your ability - I also enjoy the practical side of my course, being able to learn different skills and sports such as dance.”

SASKIA CONNOLLY

BSc (HONS) PHYSICAL EDUCATION AND SPORT



TYPICAL COURSE MODULES

Examples of the type of modules studied on the course include:

- Sport and Exercise Psychology
- Practical studies in PE and Sport
- Exercise Science
- Sociology of Health and Sport
- Body Systems
- Contemporary Issues in Health
- Sports Nutrition
- Sport in the Community
- Health Promotion and Professional Practice.

PROFESSIONAL PRACTICE

A varied programme of relevant professional placements complement and support your classroom learning.

STUDY ABROAD

In Year 2, you will have the opportunity to spend a semester studying and undertaking professional practice at one of our international partner universities.

A-level Requirements: BCC

For specific subject requirements and alternative qualifications see pages 32-33.

Duration: 3 years

UCAS Code: LL34



FOUNDATION DEGREE PHYSICAL EDUCATION AND SPORT

The Foundation Degree pathway consists of 12 compulsory modules, including a Research Project. A range of work-based placements, opportunities to volunteer at live sporting events and project-based assessments complement your academic studies.

LOCATION

The Foundation Degree Physical Education and Sport is a two year, full-time course delivered at Belfast Metropolitan College.

FOUNDATION DEGREE **PHYSICAL EDUCATION AND SPORT**



TYPICAL COURSE MODULES

Examples of the type of modules studied on the course include:

- Practical Studies
- Physical Activity, Lifestyle and Wellbeing
- Physical Activity and Sport for Specific Groups
- Introduction to Management in Health, Physical Activity and Sport
- Fitness Testing and Training
- Introduction to Health, Sport and Exercise Psychology
- Anatomy and Physiology for Sport and Health
- Applied Health, Sport and Exercise Psychology
- Event Management

PROFESSIONAL PRACTICE

A programme of relevant professional placements complement and support your classroom learning.

PROGRESSION

Graduates who achieve the desired academic standard may be eligible for progression to Year 2 of the BSc (Hons) Physical Education and Sport at Stranmillis University College.

A-level Requirements: CC

For specific subject requirements and alternative qualifications see pages 32-33.

Duration: 2 years

UCAS Code: 52L7

AN INVESTMENT IN YOUR FUTURE

Choosing to go to university is an investment in your future. A higher education qualification may lead to increased career prospects and earning potential, plus, the opportunity to study a subject you are interested in – leading to a more rewarding career.



STUDENT SATISFACTION

Stranmillis was ranked 1st in Northern Ireland, and 6th in the UK, for student satisfaction (NSS 2020).



STUDENT SUCCESS

We are proud to have a student success rate of 95%.



EMPLOYABILITY

Our graduates are highly sought after, with 97% in employment or further study fifteen months after graduation.



ACADEMIC STANDARDS

The UK Quality Assurance Agency reports the highest level of confidence in academic standards.



ACADEMIC STAFF

71% of our academic teaching staff are qualified to doctoral level.



RESEARCH EXCELLENCE

72% of research outputs deemed internationally excellent (REF 2014).

HOW MUCH DOES IT COST?

Student fees payable are dependent on the 'residency' status of each student. Full-time undergraduate tuition fees 2023-24 have not been confirmed at the time of print but are estimated as follows:

	Residency Status			
	Northern Ireland and ROI	Great Britain (GB)	EU Other*	International
Full-time undergraduate	£4,710	£9,250	£18,800	£18,800
PGCE	£4,710	£9,250	£18,900	£18,900

*EU Other - Students from the EU (excluding the Republic of Ireland), other EEA and Swiss nationals and their family members.

Part-time undergraduate tuition fees 2023-24 have not been confirmed at the time of print but are estimated as follows:

BA Early Childhood Studies	NI/GB/ROI	NI/GB/ROI Total Cost	EU Other* / International	EU Other* / International Total Cost
Year 1 - 3	4 modules (20 CATs points per standard module)	£1,288 (£322 per module)	4 modules (20 CAT points per standard module)	£12,536 (£3,134 per module)
Year 4	4 modules plus dissertation	£1,932	4 modules plus dissertation	£18,800

*EU Other - Students from the EU (excluding the Republic of Ireland), other EEA and Swiss nationals and their family members.

All fees are normally subject to an annual inflationary increase. The latest financial information is available on the College website.

TUITION FEE PAYMENT METHODS:

Course fees can be paid by:

Tuition Fee Loan/Grant: Eligible Students can apply to the Student Loans Company (SLC) for a tuition fee loan and/or, where eligible, grant. Contact your local Student Finance Authority for further information.

Pay in full at enrolment: Tuition fees may be paid by cheque, debit/credit card or bank transfer.

Direct Debit: A 25% non-refundable minimum payment by cheque, debit/credit card or bank transfer, is due on or before registration and enrolment, along with a signed Direct Debit mandate. The remaining balance will then be collected in equal instalments.

Sponsor: You may have an agreement with a sponsor, e.g. your employer, that they will financially support all or part of your studies for the academic year. Any remaining balance must be paid in full at enrolment and registration by cheque, debit/credit card or bank transfer.

MAINTENANCE LOANS AND GRANTS:

A student maintenance loan and/or grant is available to eligible students to help with day-to-day living costs whilst you are at university. The maximum amount you can get depends on a number of factors such as household income, whether you are living at home or away from home and whether you are an independent student. Maintenance loans are added to any other student loan taken and are repayable. Grants are not repayable. For more information, contact your local Student Finance Authority.

REPAYMENT OF STUDENT LOANS:

You will only repay your student loan when your income is over the threshold amount for your repayment plan. For 2022-23 the threshold was £20,195 if you were on a Plan 1 student loan. You will only repay when your income is over the threshold amount (before tax and other deductions). Other plans will have different thresholds. The threshold amounts change on 06 April every year. There is no penalty for paying some or all of your loan off early. For further information, please visit the Student Loans Company website www.gov.uk.

BURSARIES AND FINANCIAL SUPPORT

A range of bursaries and financial support funds is available to assist students who meet certain criteria. Bursaries and Financial Support for 2023-24 have not been confirmed at the time of print but are estimated as follows:

STRANMILLIS UNIVERSITY COLLEGE FINANCIAL BURSARY

A means-tested bursary of £500 per year is available to all full-time students where the household income is less than £19,203 (household income threshold for 2023-24 is still to be confirmed). The bursary is not repayable.

HALLS ACCOMMODATION BURSARY - 50% CONTRIBUTION TO THE COST OF A STANDARD ROOM

Stranmillis University College offers a limited number of Halls Accommodation Bursaries for eligible students from certain priority groups. All applicants must be eligible to receive the Stranmillis University College Financial Bursary and will need to outline how their educational progress would be enhanced by receiving a 50% contribution to the cost of a standard room in our Halls of Residence rather than, for example, continuing to study whilst based at home. The scheme is open to all full-time students (students taking the equivalent of a minimum of 120 CATS points) studying on the Stranmillis campus. In the event of more applications being received than places available some, or all, of the following additional criteria will be applied with preference given to students who:

- are in receipt of the Disabled Students' Allowance
- have a mobility disability (not a learning disability) but not in receipt of the Disabled Students' Allowance
- live furthest away from College (using Google Maps)
- are the first person in their immediate family (i.e. parent/guardian/sibling) to go into Higher Education
- live in areas of highest socio-economic deprivation using the NISRA Super Output Area (SOA) and Northern Ireland Multiple Deprivation Measure (NIMDM).

CARE EXPERIENCED STUDENTS

Verified Care Experienced students are eligible for a free Halls of Residence place for the duration of their course (no means testing applies to this priority group, i.e. they do not need to be entitled to



a Stranmillis University College Financial Bursary). Students must apply each year for a free Halls of Residence place.

A Care Leaver Study Support Bursary is also available for verified Care Experienced students at the following rates:

- £600 in first year
- £800 in second year
- £1,000 in third year
- £1,000 in final year for those enrolled on a four year degree
- £500 Graduation Award to assist with transition into employment or postgraduate study.

STUDENT SUPPORT FUND

A Student Support Fund is available to assist students who may otherwise be prevented from entering higher education. To be eligible to receive an award from the Fund, students must have availed of all available financial support and loans administered by Student Loan Company. Students must also demonstrate that they are experiencing financial hardship. Student Support Fund awards are not repayable by the student.

OTHER FINANCIAL SUPPORT

Local Education Authorities can assist with a range of further financial support dependent on the applicant's personal circumstances. We would encourage all students to contact their local Education Authority as early in the process as possible.

For further information, please see: <https://www.stran.ac.uk/courses/fees-and-finance/> or contact the University College Finance Office – studentfinance@stran.ac.uk

APPLICATIONS AND ADMISSIONS

HOW TO APPLY

Applications for full-time undergraduate courses and the full-time Foundation Degree Early Childhood Studies and Foundation Degree Physical Education and Sport are made through the Universities and Colleges Admission Service (UCAS).

Institution code name: SUCB

Institution code: S79

Applications for the BA (Hons) Early Childhood Studies (part-time) and PGCE Early Years are made directly to Stranmillis University College.

Applications for the part-time Foundation Degree Early Childhood Studies should be made directly to the relevant Regional College.

WHEN TO APPLY

Applications made through UCAS for 2024 entry open in September 2023. The closing date for receipt of applications made through UCAS is 31 January 2024 (18:00) - check the UCAS website for exact date. The closing date for receipt of application forms for 2024 entry to the BA Early Childhood Studies (part-time) is 01 March and for the PGCE Early Years is 01 February 2024.

GENERAL ENTRANCE REQUIREMENTS

At minimum, entrants must be able to satisfy the general entrance requirement of Queen's University Belfast. A-level entry requirements for each course are outlined in the relevant course pages. For the PGCE Early Years, the minimum requirement for admission is an upper second class (2:1) honours degree in the area of early years or a degree with significant early years content.

ENHANCED ACCESSNI CHECK

It is a requirement that applicants who are accepted onto all undergraduate degrees and the PGCE Early Years programme at Stranmillis University College undergo an enhanced AccessNI check. This is administered by the University College and carried out by AccessNI. Please note that for full-time BA and BE students this check is carried out at the beginning of first and third year. The University College acknowledges

the key role of education in the rehabilitative process, and a criminal record will not debar an applicant unless the nature and seriousness of the offence in question is incompatible with: 1. The course applied for 2. The ultimate professional or vocational goal; or 3. Participation in an academic and social setting and the university's responsibility to ensure a safe and neutral environment.

DEFERRED ENTRY

The University College does not accept applications from students who wish to defer.

MATURE STUDENTS

Stranmillis University College welcomes applications from mature students who have interrupted their studies for several years or did not have the opportunity to enter higher education. We require evidence of recent academic study. The qualifications most frequently offered by such candidates are Access courses, A-levels, Diplomas, Foundation Degrees and Open University credits.

DISABILITY, MEDICAL CONDITION OR SPECIAL NEED

Stranmillis University College encourages applications from students with disabilities and endeavours to make sure that individual requirements are met. Deciding to disclose a disability can be a difficult choice for students applying to university. While we accept this to be a personal decision, we strongly recommend that applicants inform us in order that individual requirements can be addressed so that appropriate support is made available from the commencement of the course. Please be assured that disclosure of disability information or support requirements will not adversely influence any application or indeed the application process. The information you provide will be treated as sensitive and kept strictly confidential. It will only be used to plan for your individual support requirements ensuring that your transition to Stranmillis University College is as smooth as possible. If you need any guidance about disclosing disability, or the arrangements which we can make, please contact: Student Support and Wellbeing on **(028) 9038 4510** or email: disabilityservices@stran.ac.uk

APPLICATIONS AND ADMISSIONS

MEDICAL FITNESS

All candidates who have accepted a firm offer of a place on any course must complete and return a declaration of health. In light of the replies given, the University College medical officer will classify the candidate as fit, or seek specialist advice before classifying a candidate as either fit or unfit.

ACCURACY

Stranmillis University College is concerned at all times to evaluate its courses in light of statutory obligation, accreditation requirements and responses from staff, students and teachers – and to make improvements where they are considered to be appropriate. Changes to programmes, modules and services may be necessary; for example, to meet the requirements of an accrediting body or to keep courses current as a result of research and development. Changes to programmes may also be necessary due to circumstances outside the reasonable control of the University College, such as a key member of staff leaving the University College or being unable to teach; or where there are too few students for a module(s) to be viable; or to ensure the student experience the University College aims to provide. If changes to your programme are made after you have accepted your offer, the University College will notify you of such changes and will aim to minimise any disruption to you by offering suitable alternative arrangements or by helping you to find an alternative module(s).

TERMS AND CONDITIONS

When you are offered a place on an undergraduate or postgraduate taught course delivered at the University College you will be notified of the terms and conditions between the University College and students on our taught programmes of study. When you accept an offer of a place on a programme at the University College, a contract is formed between you and the University College on the basis of the terms and conditions. You should read the terms and conditions carefully before accepting any offer. On the day you accept an offer

from the University College the contract will be formed and a 14-day cooling-off period will begin.

ADMISSIONS PROCESS - BEd AND BA (FULL-TIME) PROGRAMMES

The College receives applications directly from UCAS. Applications are considered on the basis of the information provided. It is the responsibility of the applicant to ensure that complete detail is provided. All applications must contain a reference, otherwise they will not be considered. All fully completed applications submitted by the normal closing date, late January (check UCAS website for date) are given equal consideration. Applications received after this date will not be considered.

STEP 1 – REVIEW OF ACADEMIC PROFILE

Applicants must have a minimum C grade in GCSE English and Mathematics (see page 32 for full GCSE requirements). If an applicant is attempting to achieve the GCSE subject requirements in the year of application, this must be demonstrated in the UCAS application. Please note that Level 2 Essential Skills Numeracy and Application of Number is not acceptable in lieu of GCSE Mathematics. Level 2 Essential Skills Communication is acceptable in lieu of GCSE English. An unsuccessful decision will be processed against an application that does not meet the GCSE requirements. Applicants that have already completed A-levels (or equivalent level 3 qualifications) but do not precisely meet or fall slightly below the entry requirements, may still be shortlisted for interview, but will not initially receive an offer. Such applicants may be reconsidered in August, assuming the required interview score has been achieved and depending upon availability of places.

STEP 2 – REVIEW OF UCAS PERSONAL STATEMENT

Applicants who meet the initial academic criteria will have their personal statement reviewed by a member of staff in Academic Registry. A personal desire and

motivation for teaching (BEd) or working with young children (BA) must be evident in your personal statement. You will be required to demonstrate this by providing examples of working with children in a structured environment, preferably in a nursery, primary or post-primary school classroom setting. An unsuccessful decision will be processed for any applicant that does not demonstrate this evidence in their personal statement.

STEP 3 – INTERVIEW AND PRESENTATION

Applicants that pass the first two steps of the process will be invited to take part in an interview and presentation. Applicants will be notified of their interview date, and the presentation topic, at least one week beforehand. Interviews are held in February and March. The interview is conducted by a panel of two, normally comprising a member of academic staff from Stranmillis University College and a current/retired education professional. The presentation is followed by a short interview during which the interviewers will ask you a number of set questions. The interview, including the presentation, lasts approximately 20 minutes. Both the interview and the presentation are scored out of 20 giving a total possible score of 40.

STEP 4 – OFFERS

Offers are made on the basis of ranked interview and presentation score and verification of qualifications. The College aims to have offers processed on UCAS before the end of March, however, the final UCAS deadline for 'on time' applications is May (check UCAS website for exact dates).

BA (HONS) EARLY CHILDHOOD STUDIES (PART-TIME)

For BA (Hons) Early Childhood Studies (part-time) applicants, the Interview and Presentation step is replaced by a Group Interview and Discussion.

GROUP INTERVIEW

Applicants who pass the first two steps of the process will be invited to take part in a group interview. Applicants will be notified of their interview date, and the discussion topic, at least one week beforehand. Group interviews will take place in May 2024. The interviews will be conducted by a panel of two academic staff from Stranmillis University College and their collaborative provision partners in the Regional Colleges. At this stage, entrants to the part-time degree must be able to demonstrate that they can obtain a placement with young children in a structured setting, through either employment or negotiated access. It is advised that this should be for a period of no less than 7 -10 hours per week, and must be focused on children within the age range 0 to 8 years.

BSc (HONS) PHYSICAL EDUCATION AND SPORT

There is no interview and presentation stage for the BSc (Hons) Physical Education and Sport degree. An applicant's GCSE or AS-level profile is taken into account when deciding on whether or not to make conditional offers.

STEP 5 – CONFIRMATION AND CLEARING

Following publication of results in August, applicants that exactly meet or better the conditions of their offer will be accepted onto the course. Depending on the number of successful applicants and the number of vacancies still to be filled, it may be possible to offer places to applicants who have dropped slightly below the conditions of their offer. In the event of a small number of places being available, an applicant's interview score and overall academic profile, including GCSEs and AS Levels, will be assessed and decisions will be made on this basis.



**STRANMILLIS
UNIVERSITY COLLEGE**

Stranmillis Road, Belfast, BT9 5DY
Northern Ireland, United Kingdom

T: **+44 (0)28 90381271**
www.stran.ac.uk