



STRANMILLIS UNIVERSITY COLLEGE  
A College of Queen's University Belfast

20

UNDERGRADUATE  
**PROSPECTUS**

23

Start your journey with Stran



# WHY CHOOSE STRANMILLIS?



## STUDENT RETENTION

Stranmillis has one of the highest student retention rates in the UK at 98%.



## GLOBAL CAMPUS

The campus attracts students and staff from over 30 partner universities worldwide.



## ACADEMIC STANDARDS

The UK Quality Assurance Agency reports the highest level of confidence in academic standards.



## STUDENT SATISFACTION

Stranmillis was ranked 1st in Northern Ireland, and 6th in the UK, for student satisfaction (NSS 2020).



## ACADEMIC STAFF

71% of our academic teaching staff are qualified to doctoral level.



## ECO CAMPUS

The College is the first HEI in Northern Ireland to be awarded EcoCampus status.



## STUDENT SUCCESS

We are proud to have a student success rate of 95%.



## STUDY ABROAD

All students have the opportunity to spend time studying abroad.



## EMPLOYABILITY

Our graduates are highly sought after, with 97% in employment or further study fifteen months after graduation.





# WELCOME

Thank you for considering applying to study at Stranmillis University College. Stranmillis is a specialist, education-focused university college of Queen's University Belfast that is inspiring and supporting our students to become the next generation of education leaders. As a student here, you will not only have a chance to explore the world around us, you will play your own part in the impact the College is making in Northern Ireland and globally – shaping education, unlocking the potential of children and young people and building better futures for all.

As you read through this prospectus, I hope you will get a real sense of life at Stranmillis. Like every top university, we are committed to excellence and quality in the courses we offer and in our teaching and research. However, life at university is about so much more than the time you spend in lecture theatres. Professional placements, the opportunity to study abroad and degree enhancement and volunteering opportunities also play a key role. The sense of community that comes from being part of a small, close-knit college and opportunities to fully engage in student life, driven by a Students' Union that has been voted the best small students' union in Ireland for the past two years, add further to the richness and uniqueness of your student experience.



That 'all-encompassing educational experience' is part of the reason our students succeed and why our graduates are highly sought after; with employment rates for education-related graduates second only to graduates of medicine and related subjects.

**We look forward to welcoming you to University College – start your journey with Stran.**

**Professor Jonathan Heggarty**  
 MBE, BSc(Hons), PhD, PGCFHE, MCGI  
 Principal and CEO





# CONTENTS

Welcome	2	<b>EXPLORE OUR COURSES</b>	
<b>STUDENT LIFE</b>		Undergraduate Entrance Requirements	32
A Place For You	6	Initial Teacher Education	34
The Students' Union	8	BEd (Hons) Post-Primary	36
Affordable Student Accommodation	10	Subsidiary Subjects	44
Stranmillis Campus	12	BEd (Hons) Primary	48
<b>STUDY AT STRAN</b>		BA (Hons) Early Childhood Studies	52
Reimagine Learning	14	Foundation Degree: Early Childhood Studies	56
Teaching and Learning	16	BSc (Hons) Physical Education and Sport	58
Shaping Your Future	18	Foundation Degree: Physical Education and Sport	62
A Global Outlook	20	<b>AN INVESTMENT IN YOUR FUTURE</b>	
World-Class Facilities	22	How Much Does It Cost?	65
You Are Not Alone	24	Bursaries and Financial Support	66
Support Tailored To You	26	Applications and Admissions	67
Ready To Run	28		
World Leader In Research	30		

## DISCLAIMER

The information in this prospectus is intended as a guide to the courses, programmes and facilities offered by Stranmillis University College. Further details are openly available on our website. The information provided in this prospectus is correct at the time of publication. Changes may be made to our programmes, courses and the facilities and resources which support them. Any changes will be available on our website and will be made clear to you before any offer is made to you. Please visit [www.stran.ac.uk](http://www.stran.ac.uk) for the latest information.

# STUDENT LIFE



## STUDENTS' UNION

Voted best small Students' Union in Ireland 2019-20 and 2020-21



## STRAN HALLS

Unique catered accommodation offering great value student living.



## STUNNING CAMPUS

Great location in the heart of South Belfast, awarded EcoCampus status.





# A PLACE FOR YOU

The Stranmillis campus is a place of remarkable beauty and interest. Picturesque grounds with ponds, woodlands and open green spaces; great facilities to help you develop your talents; social areas to enjoy downtime with friends; and a great location to enjoy everything Belfast has to offer combine to create a unique campus community and student experience.



“

**Stranmillis is a place that thrives on community. I've made lifelong friends and had a serious amount of craic.**

Matthew Orr

”



## GET ACTIVE

In addition to our on-campus sports facilities, you can embrace the great outdoors, with stunning cycling, running and walking trails, tennis clubs, sports pitches and watersport centres all on your doorstep.

## A VIBRANT, YOUTHFUL CITY

Named the best region in the UK by Lonely Planet and among the top five most affordable student cities in the UK, the college is located in the Queen's Quarter of Belfast, where you will embrace a colourful mix of social, cultural, art, music and history experiences.



## RELAX AND UNWIND

When it's time to unwind, Betty's and Scholars coffee shops and the Students' Union are lively social spaces to meet and spend time with friends; or simply take a stroll through the scenic campus and enjoy the peaceful green haven, which has been awarded EcoCampus status.

## EXPRESS YOURSELF

Whether your passion is for art, music, drama or media, the College provides specialist resources to help you express yourself, including a 260-seat drama theatre, music recital and practice rooms and dedicated studios for media production, ceramics, textiles, art and design. If you love performing, there are a wealth of opportunities to showcase your talents from Stran TV to panto, choir to Music@Stran.





# THE STUDENTS' UNION

The Students' Union is the heartbeat of student life. You will be part of a thriving, tight-knit community, with a great range of social and extra-curricular opportunities that reinforce that sense of community and closeness. Led by students for students, the Union supports you academically, socially and personally from your first day at College through to the day you graduate; helping you 'find your feet'; ensuring you have the opportunities to make the most of your skills and talents; and giving you a voice on what matters to you.



“

**Savage theatre for events and the facilities, Scholars and Betty's, are just class all round.**

Eoghan Boyce

”



## GET SOCIAL

The Students' Union arranges a varied programme of events and activities throughout the year, from Fresher's Week to Stran Does Strictly, acoustic nights in Scholars to the Back to School Bop and Annual Ball.

## MAKING A DIFFERENCE

Throughout the year, the Students' Union organises a host of events that provide opportunities for you to showcase your hidden talents to help raise funds for the Union's chosen charity partners and, at the same time, create memories you will cherish.

## CLUBS AND SOCIETIES

Whether you are keen on sports; interested in music, media, drama or the Christian Union; or have other hobbies or interests, there are a wide range of clubs, societies and activities to get involved with, including the legendary Stran Panto!







“  
The campus is beautiful, like stepping into a wonderland – such a lovely place to live and study.  
”  
Meabh Magee

# AFFORDABLE STUDENT ACCOMMODATION

Create fabulous memories while living in halls – getting the best and most from your university life. Living in halls allows you to forge lifelong friendships in a safe, supportive environment. Stran Halls offers a unique, catered accommodation package that allows you to maximise your time at university.



- Single or ensuite rooms
- Breakfast and dinner, 5 days a week (term-time)
- 37/38 week contracts
- All utility bills and WiFi included
- Extensive on-campus facilities



## GREAT LOCATION

Located on campus, in the heart of the Queen's Quarter and set in stunning grounds, Stran Halls provides safe, secure student accommodation within walking distance of Belfast city centre.

## ROOMS

Stran Halls offers modern, fully furnished, single occupancy accommodation with a choice of shared or ensuite bathrooms, all with access to communal kitchen facilities and living spaces in each flat. If you and your friends want to be in the same flat, we will arrange it.

## FOOD

Forget about cooking, food shopping and washing up; Stran Halls provides catered accommodation, creating more time for socialising and studying. Catering is provided term-time and includes a cooked breakfast and 3-course evening meal (Monday to Thursday) and lunch (Friday) in 'Chatz' restaurant.



## AFFORDABLE

Great value for money, Stran Halls is the only halls accommodation in Belfast that allows you to live within the maximum maintenance grant when living away from home. Stran Halls has it covered - room, food, utilities, WiFi and a host of extras.





# STRANMILLIS CAMPUS



# STUDY AT STRAN



## GLOBAL OPPORTUNITIES

A wealth of opportunities to spend time studying abroad or volunteering.



## STUDENT SUPPORT

A broad range of health, wellbeing, academic and personal support services available.



## EMPLOYABILITY

Our graduates are highly sought after, with 97% in employment or further study fifteen months after graduation.





# REIMAGINE LEARNING

Education has the power to transform everything and, as such, educators are powerful agents for change. Educators are in the unique and privileged position to deliver knowledge, to identify and nurture talents and skills, to inspire curiosity and innovation and equip generations of people to collectively create change.



Getting involved with opportunities to further develop working relationships was a highlight.

Emma Edwards



## EFFECTIVE

Effective educators are leaders, visionaries, communicators, collaborators, researchers, problem solvers, facilitators, persuaders, learners, advisers and risk takers, creative thinkers and role models - transferable skills that are developed on our degree programme.

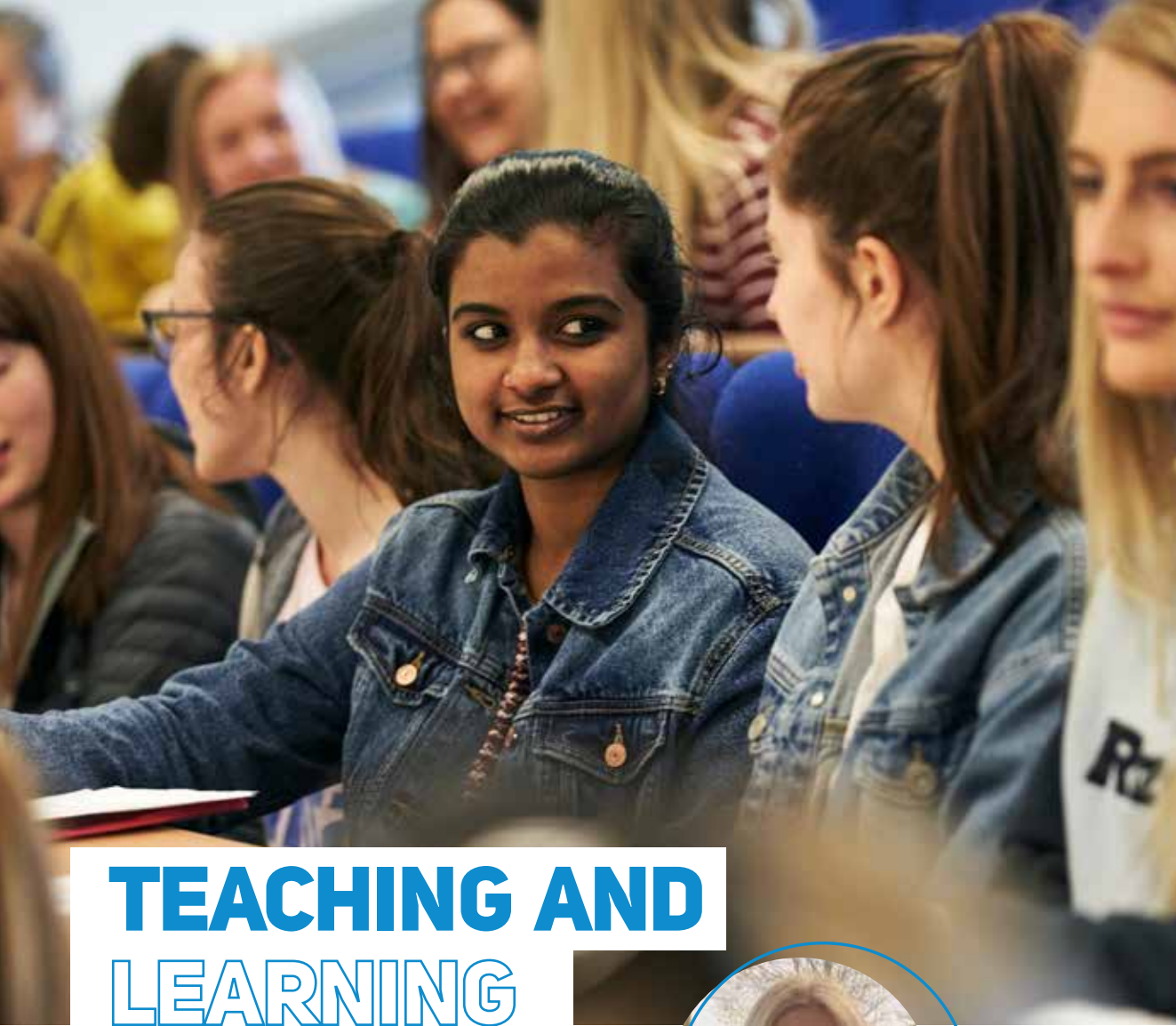
## LIFELONG

Education is not just about schools and teaching. It's lifelong and affects virtually every aspect of our daily lives - social, arts and culture, sport, health, wellbeing, environment, business and community. Our graduates are advocates for continuous lifelong learning and development.

## PASSIONATE

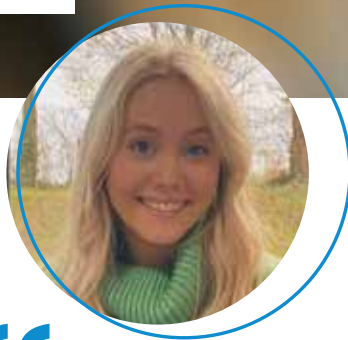
Whatever your passion or interest, our courses are designed to make you an effective educator and our graduates are making a difference globally. **Be the difference.**





# TEACHING AND LEARNING

At Stran, you are part of a community of passionate educators whose research, scholarship and teaching is making an impact globally. Our teaching staff have a passion and desire to learn, to question, to innovate and to instil those same qualities in our students. Innovative thinking, pushing boundaries and tackling global issues such as academic underachievement and special educational needs are in our DNA. Our students, like our staff are inspired to be shapers of education rather than followers.



“

**The tutors take time to answer questions, discuss problems and really get to know you as a person.**

Abbie Rea

”



## A DIFFERENT WAY OF LEARNING

When you start your degree, you will notice a big difference in the way you are taught and learn:

- lectures, to give you a foundation about your subject
- tutorials, which offer in-depth analysis of lecture information
- seminars, workshops and group projects that allow for more intensive discussions
- practicals, which give you hands-on experience to develop subject-related skills
- self-directed independent study
- constructive feedback on assessment and learning
- professional placements to hone your skills and knowledge

## REFLECTIVE, CRITICAL THINKING

As shapers of education, you will be encouraged and supported to develop independent critical thinking and reflective analysis, with assessment not only on your academic performance, but also on the skills that employers value.







# SHAPING YOUR FUTURE

Enhancing employability is key to your Stranmillis experience. The transferable skills you develop throughout your academic studies, together with the experience acquired from work-based professional placements, ensure that our graduates are highly sought after. The unemployment rate for Stranmillis graduates six months after graduation is just 0.6% (Higher Education Statistics Agency 2020).



“  
**School-based work is always my favourite part of the year, it's where you learn most about teaching!**  
”  
Danny McCombe



## WORK-BASED PLACEMENTS

An extensive programme of work-based professional placements lies at the heart of all of our courses, providing you with practical, hands-on experience in a range of relevant workplace settings. To explore a broader career outlook, our BEd students, in addition to their school-based placements, also undertake a placement with one of our 250+ 'alternative placement' partners.

## DEGREE ENHANCEMENT

To help our students stand out from the crowd, our Degree Enhancement programme provides a range of opportunities to enhance your skillset through optional short courses, awards, community volunteering opportunities and volunteering activities within the College in areas relevant to your chosen career path.



## VOLUNTEERING

Stranmillis has developed close ties with a number of education-related charities, such as Fields of Life and Saphara, with student teams volunteering on projects and initiatives in Uganda and India. Numerous other local volunteering and degree enhancement opportunities are also available.





# A GLOBAL OUTLOOK

At Stranmillis, you will have opportunities to broaden your horizons and develop a global outlook and international perspective on education. The chance to learn alongside students from different countries, spend time living and studying abroad; and to get involved in international volunteering initiatives adds to your overall learning experience.



“The opportunity to study in Indiana and teach in an American school is an experience I’ll never forget!”

Keelin Wilson



## STUDY ABROAD

Studying abroad is an enriching experience both academically and personally. A third of our students take up the opportunity of studying at one of our 30+ partner institutions worldwide, exploring and sharing different cultures, improving their language skills and acquiring new perspectives on teaching and learning.

### Benefits of study abroad

- enjoy the opportunity of a lifetime
- experience a different education style, gaining a new perspective on your subject area
- enhance your future employability and broaden your global network
- personal development - gain independence and life experience
- improve your language skills and cultural awareness
- make lifelong friends from around the world



## WORLDWIDE COMMUNITY

With over 30 university partners worldwide, the College is committed to making a global impact. Through our research and scholarship activities, our outgoing and incoming student and staff mobility programmes and our international development initiatives, the College is a unique, globally connected community of learners who learn with and from each other.







# WORLD-CLASS STUDY FACILITIES

We continue to invest in creating world-class teaching and learning spaces. Our virtual learning environment, interactive teaching technologies, library and study resources, along with integrated communication systems, are designed to help you succeed and ensure you have everything you need for formal, group and independent study.



“

The Library is such a lovely, calm space and the librarians are the best.

Becky Begley

”

## THE RIGHT TOOLS AND TECHNOLOGIES

Whether it's for formal teaching, personal study or off-campus study, our virtual learning environment (VLE) provides you with access to all of the information you need for your studies – lecture notes, video lessons, handouts, assignment details, submissions and communication with your lecturers.

## SPACES TO LEARN

Whether you need a quiet place for independent study or a large space for group assignments, discussions and study, you have access to a multitude of study areas and learning zones, all equipped with the learning resources, research tools, WiFi and IT support you need.

## SPECIALIST FACILITIES

Whatever degree programme you are on, you will find a superb range of specialist facilities - sport and health, science labs, technology and design workshops, music suites, drama theatre, early years centre and a host of specialised art and creative studios.

## THE HEART OF STUDY

With all the books, periodicals, journals and research tools you need, the Library is the best place to start and complete assignments, projects or dissertation. Our highly experienced library team offer outstanding levels of service, which is consistently reflected in the very high scores it gets in the National Student Survey.







# YOU ARE NOT ALONE

We want you to achieve your potential and enjoy student life at Stranmillis. From the moment you begin your studies, you will be championed by a dedicated team of academics, who are experts in their field. You will have access to individual learning support to help you take control of your learning and develop confidence.



**Lecturers are very approachable and always there to help with any concerns that arise.**

Andrew Greer



## TAUGHT BY EXPERTS

You will be taught by a team of academic experts who are world leaders in their field of specialism. Discover their passion and be inspired by their enthusiasm.

## PERSONAL TUTOR

Your personal tutor provides one-to-one academic support throughout your studies. They will take time to get to know you, helping you tackle practical issues that you may need support with and assist with personal and pastoral issues.

## PEER MENTORS

Who better to help you settle in to college life than a current student already studying on a similar degree programme? Your peer mentor, who is there to support your transition to higher education, has been where you are and is ideal to familiarise you with life at Stran.

## OUR STUDENTS RATE US

Our ratings for student satisfaction in the independent National Student Survey (NSS) are an indicator of the quality and excellence of the teaching and support you receive at Stranmillis. In the 2020 NSS, the College was ranked 6th in the UK for student satisfaction.





# SUPPORT TAILORED TO YOU

No two students are the same and our Student Support team are on hand to offer personalised support throughout your studies. The College succeeds when you succeed and we strive to enable every student to reach their full potential and enjoy their Stranmillis experience. Our team of friendly, experienced staff are available to help with a broad range of health, wellbeing, academic and personal support services to ensure you are equipped and fully supported to succeed. You may never need these services, but if you do, there is help available.



**The Student Support Centre has really helped me transition into university life!**

Amy McCloy



## STUDENT SUPPORT SERVICES

The Student Support team offer a broad range of support services including:

- Disability Support
- Communication Support Centre
- Counselling and Wellbeing Services
- Occupational Health and referral to specialised support
- Student Finance guidance and support, including money matters, bursaries and scholarships.

## COMMUNICATIONS SKILLS CENTRE

A free service available to all students, the Centre provides individual and group tuition to help and support students develop their writing and communication skills. The Centre is staffed by trained peer tutors.

## STUDENTS WITH DISABILITIES

Stranmillis is committed to inclusive study so that everyone can participate in student life. Our Disability Support Service offers guidance and signposting to relevant internal and external support and resources for students with a disability or specific learning difficulty.

## CHAPLAINCY

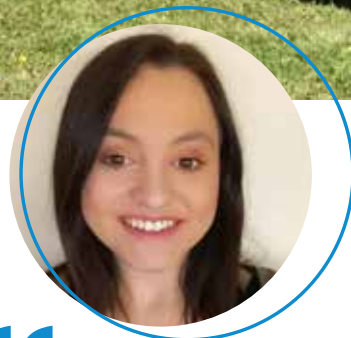
The College has a strong ethos of diversity, mutual understanding and pastoral care, and our chaplains welcome and provide pastoral support to students from all faiths, beliefs and backgrounds.





# READY TO RUN

Our Careers Service is available to help guide and support you throughout your degree, and for two years after graduation. Our aim is to equip you with the skills, confidence and work-based experience to succeed in the world of work. You will have ongoing opportunities to meet with prospective employers at a range of College-organised careers fairs and events.



“**Hands-on experience allows us to practice what we are learning and is an opportunity to network with staff we may meet again.**”

Anna Guest



## THE FINISHING LINE

Think of a degree from Stranmillis as a career foundation. To be career-ready when you graduate, you need a course that is built around the specific requirements of your chosen path, and our focus is on developing the qualities, skills and expertise that employers are looking for.

## CAREERS SUPPORT

Alongside the development of the skills, expertise and experience to succeed, our Careers team also provides:

- support in exploring and developing your career plan
- guidance on searching for a job, assessments and selection procedures
- masterclasses on writing CVs and attending interviews and assessment centres
- career support, with a tailored support service for international students and students with disabilities.

## GLOBAL EMPLOYABILITY

Enhancing employability skills is a common thread interwoven throughout the curriculum for all our courses. Department for the Economy figures show that education graduates have one of the highest rates of graduate employment, surpassed only by Medicine, Dentistry and allied subjects. A degree from Stranmillis University College opens up a world of opportunities, with graduates taking up posts around the globe.







# WORLD LEADER IN RESEARCH

Education affects everyone, and has the power to shape and transform lives. For the past century, our research and scholarship work has helped shape educational policy and practice locally, nationally and internationally. In the last Research Excellence Framework, 72% of our research outputs were rated as world-leading or internationally excellent. The College's research and scholarship is focused on equipping tomorrow's educators with the tools to unlock and maximise the potential of every young person.

The immediate impact of our research is our own teaching; what we teach, where we teach and how we teach. This means that your teaching and learning is built on leading edge educational thinking.

Our influence extends far beyond the gates of the College and we are recognised as a leader in critical areas such as:

- Educational Underachievement
- Playful Learning
- Early Years Education
- Special Educational Needs
- Pupil wellbeing



# EXPLORE OUR COURSES

Stranmillis University College offers the following full-time and part-time undergraduate and foundation degree courses:

## INITIAL TEACHER EDUCATION

- BEd (Hons) Post-primary, Business and Enterprise **P36**
- BEd (Hons) Post-primary, Mathematics **P38**
- BEd (Hons) Post-primary, Religious Studies **P40**
- BEd (Hons) Post-primary, Technology and Design **P42**
- BEd (Hons) Primary **P48**

## EARLY CHILDHOOD STUDIES

- BA (Hons) Early Childhood Studies (Full-time) **P52**
- BA (Hons) Early Childhood Studies (Part-time) **P54**
- Foundation Degree Early Childhood Studies **P56**

## PHYSICAL EDUCATION AND SPORT

- BSc (Hons) Physical Education and Sport **P60**
- Foundation Degree Physical Education and Sport **P62**



# UNDERGRADUATE ENTRANCE REQUIREMENTS 2023

Programme	UCAS Code	A-Level Requirements	Subject Requirements	GCSE Requirements
BEd (Hons) Primary	X120	AAB	No subject requirement	English, Mathematics and Science grade C
BEd (Hons) Post-primary Business and Enterprise	N1X3	BBC	At least one from Business Studies, Economics or Accounting	English and Mathematics grade C
BEd (Hons) Post-primary Mathematics	XG10	BCC	Mathematics	English and Mathematics grade C
BEd (Hons) Post-primary Religious Studies	XVC6	ABB	Religious Studies	English and Mathematics grade C
BEd (Hons) Post-primary Technology and Design	XW12	BCC	At least one from Technology and Design, Computing or Physics	English and Mathematics grade C
BA (Hons) Early Childhood Studies	X310	BBB	No subject requirement	English and Mathematics grade C
Foundation Degree Early Childhood Studies	LX53	CC	No subject requirement	English and Mathematics grade C
BSc (Hons) Physical Education and Sport	LL34	BCC	At least one from Sports Studies, Physical Education, Biology, Leisure Studies, Home Economics or Health and Social Care	English, Mathematics and Science grade C
Foundation Degree Physical Education and Sport	52L7	CC	At least one from Sports Studies, Physical Education, Biology, Leisure Studies, Home Economics or Health and Social Care	English and Mathematics grade C

Programme	Access Course Requirements	Irish Leaving Certificate Requirements
BEd (Hons) Primary	70% Average in Level 3 modules.	H2 H3 H3 H3 H3 H3. Minimum O4 required in Maths and English.
BEd (Hons) Post-primary Business and Enterprise	65% Average in Level 3 modules, to include 65% in a Business related module.	H3 H3 H3 H3 H4 to include Business, Economics or Accounting. Minimum O4 required in Maths and English.
BEd (Hons) Post-primary Mathematics	65% Average in Level 3 modules in a Mathematics based Access course.	H3 H3 H3 H3 H4 to include Mathematics. Minimum O4 required in English.
BEd (Hons) Post-primary Religious Studies	65% Average in Level 3 modules to include at least one Humanities related module.	H2 H3 H3 H3 H3 to include Religious Studies. Minimum O4 required in Maths and English.
BEd (Hons) Post-primary Technology and Design	65% Average in Level 3 modules in a Technology, Engineering or Computing Access course.	H3 H3 H3 H3 H4 to include either Technology and Design, Computing or Physics. Minimum O4 required in Maths and English.
BA (Hons) Early Childhood Studies	65% Average in Level 3 modules.	H3 H3 H3 H3 H4 H4. Minimum O4 required in Maths and English.
Foundation Degree Early Childhood Studies	55% Average in Level 3 modules.	H5 H5 H5 H5 H5. Minimum O4 required in Maths and English.
BSc (Hons) Physical Education and Sport	65% Average in Level 3 modules in Access course containing Sport/Health/Biology related modules.	H3 H3 H3 H4 H4 to include Biology. Minimum O4 required in Maths and English.
Foundation Degree Physical Education and Sport	55% Average in Level 3 modules in Access course containing Sport/Health/Biology related modules.	H5 H5 H5 H5 to include Biology. Minimum O4 required in Maths and English.

\*Applicants studying BTEC Subsidiary Diploma/National Extended Certificate/OCR Cambridge Technical Introductory Diploma/Extended Certificate Level 3 in lieu of A Levels should note the below equivalencies. Please note that the below is stated in terms of an overall grade.

A Level Grade	BTEC (QCF) Subsidiary Diploma/OCR Cambridge Technical Introductory Diploma/Extended Certificate – Level 3/ BTEC (RQF) National Extended Certificate -Level 3 Equivalent
A	Distinction*
B	Distinction
C	Merit





# INITIAL TEACHER EDUCATION

How do children learn and develop? How do you unlock and maximise the potential of every child and provide them with the best start in life? As a teacher, you are in the unique and privileged position to shape and change the lives of young people, families and communities. Effective teachers are lifelong learners, leaders, communicators, collaborators, creative thinkers, problem solvers and role models. Our BEd programmes will not only teach you how to teach, but will equip you with the skills, knowledge and experience to help you inspire young people to maximise their potential.

## PROFESSIONAL ACCREDITATION

All of our BEd (Hons) degree programmes are accredited by the General Teaching Council (NI), with successful completion of the degree leading to Qualified Teacher Status certification, allowing you to teach in primary and secondary schools in Northern Ireland.

## HOW WILL I STUDY?

In addition to lectures, tutorials, workshops and individual/group projects, you will undertake an extensive programme of school-based professional placements. In year 3, you will also have the opportunity to spend a semester studying abroad at one of our partner universities worldwide. In year 4, you will conduct research and complete a dissertation on a topic that you are passionate about.

## PROFESSIONAL PLACEMENTS

In each year of your degree programme, you will spend 7-9 weeks in a range of educational settings. In your final year, you will also undertake a 2-week placement in an alternative education setting.

## STUDY ABROAD

In Year 3, you will have the opportunity to spend a semester studying and undertaking professional practice at one of our international partner universities in Europe, Asia and North America.

## WHO WILL BE TEACHING ME?

In college and on your school-based professional placements, you will be taught, assessed and supported by an exceptional team of internationally recognised, research-informed and experienced practitioners. As a small, specialist institution, you get to know your tutors and they get to know and support you to become a shaper of education.

## HOW WILL I BE ASSESSED?

A variety of assessment methods are used, including critically reflective essays, individual and group projects and presentations, e-portfolios, formal examinations, assessment on placement and final dissertation.

## CAREER PROSPECTS

The most recent Graduate Outcome survey reports that 97% of our graduates are in employment or further study fifteen months after graduation. Outside of medicine and related subjects, education graduates have the next highest employment levels. Although most BEd graduates pursue a career in teaching, the transferable skills open up careers opportunities in many other fields including youth services, general management, social and community work and local government.



## PRIMARY PATHWAY

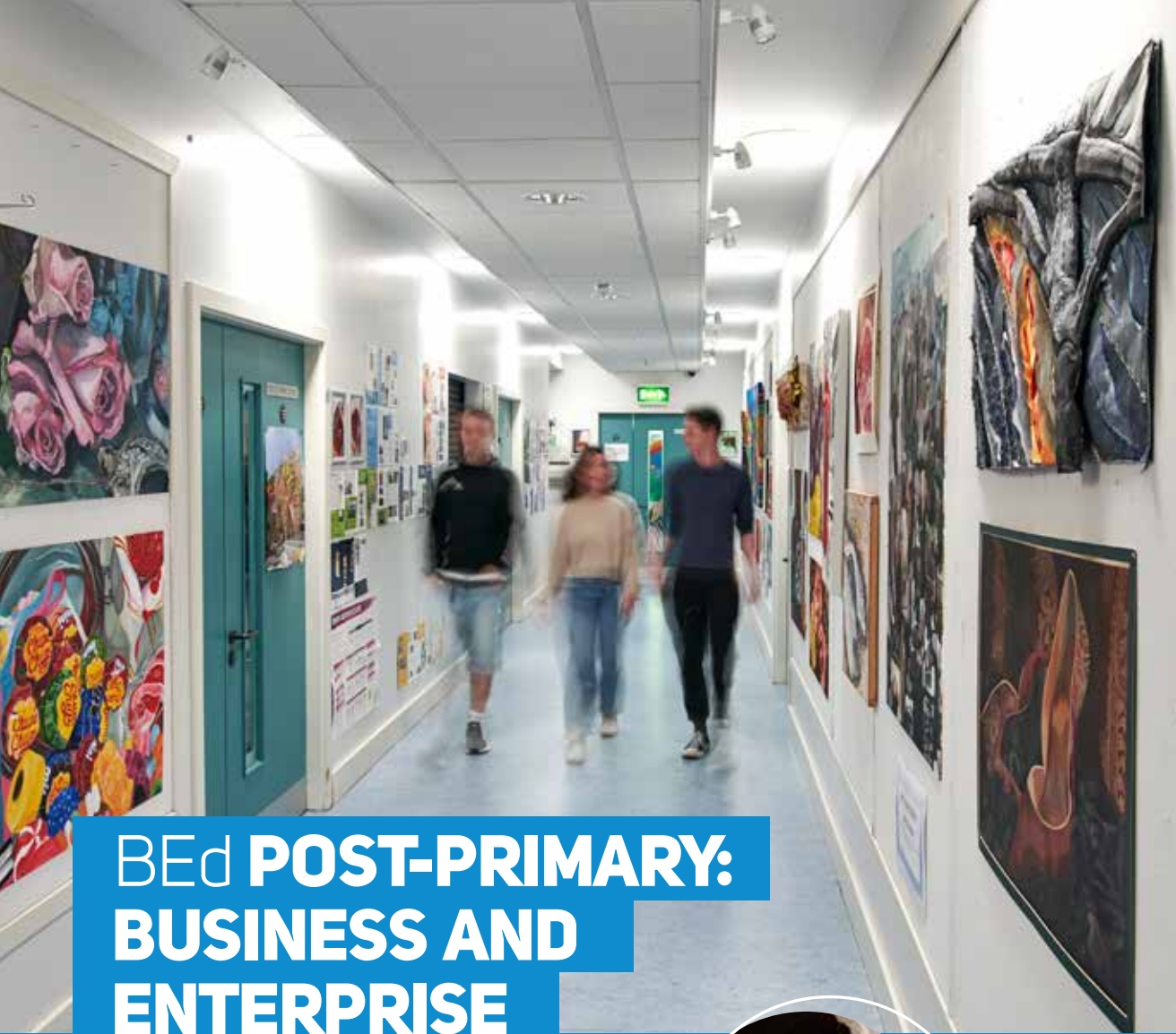
On the Primary pathway, in Years 1-3, in addition to educational studies and curriculum studies, you will also study, in-depth, a specialist area of learning from: Art and Design; Drama; English and Literacy; Geography and History; Maths and Numeracy; Music; Physical Education; Religious Education; or Science and Technology.

## POST-PRIMARY PATHWAYS

Our BEd Post-primary programme is highly flexible, giving you a very broad choice of subject combinations, allowing you to make the most of your academic strengths and interests. In addition to choosing one of the four main subject areas, you will also choose a subsidiary subject, which you can normally teach to Key Stage 3/GCSE level.

MAIN SUBJECT	
Business & Enterprise	Mathematics
Religious Studies	Technology & Design
SUBSIDIARY SUBJECTS	
Computing	English
Mathematics	Physical Education
Religious Studies	KS3 Science





# BEd POST-PRIMARY: BUSINESS AND ENTERPRISE

Business and Enterprise is an academically stimulating and challenging area which affords you the opportunity to study a range of business topics. Throughout the course you will develop effective teaching methods for business-related subjects which are currently offered at Key Stage 4 and post-16 level. You will improve your critical awareness of the dynamic nature of the business world and the issues faced by changing practices and developments. The course will extend your knowledge of a range of enterprising businesses and practices at a local and national level, and recognise the need to adopt an entrepreneurial attitude.



“

**It's fantastic to get out into the classroom and put my learning into practice.**

Jonathan Hall

”

## BEd POST-PRIMARY: BUSINESS AND ENTERPRISE



### EDUCATION STUDIES

Education Studies is a constantly changing, diverse and exciting subject of study, exploring psychological, social, philosophical, historical and contemporary aspects of education. Typical modules include:

- Education Studies
- Children with Special and Additional Needs
- Learning and Assessment in Diverse Classrooms

### MAIN SUBJECT

Typical subject specific modules studied on the course include:

- Marketing
- Financial Accounting
- Contemporary Business
- Managing Projects
- Managing People
- Operations Management
- General Business Decision Making

### SUBSIDIARY SUBJECT

Alongside your Education Studies, Professional Practice and Business and Enterprise modules, you will study a subsidiary subject. Please refer to pages 44-47 for information on the available subsidiary subject options.

### PROFESSIONAL PRACTICE

Personal and professional learning is a core element of the degree programme, with an extensive professional placements element allowing you to gain experience in a range of formal (primary and post-primary schools or a FE college) and alternative education settings.

### A-level Requirements: BBC

For specific subject requirements and alternative qualifications see pages 32-33.

**Duration: 4 years**

**UCAS Code: N1X3**





# BEd POST-PRIMARY: MATHEMATICS

On the Mathematics programme, you will learn how to share your enjoyment of Mathematics with future learning leaders. If you like problem solving and logical thinking, you will discover the relevance of mathematics in everyday situations. Mathematics is presented as a dynamic subject with an emphasis on flexibility of mind and imaginative teaching methods.



“

Everyone is so welcoming, the camaraderie flows the whole way through your degree.

Joshua Booth

”

## BEd POST-PRIMARY: MATHEMATICS



### EDUCATION STUDIES

Education Studies is a constantly changing, diverse and exciting subject of study, exploring psychological, social, philosophical, historical and contemporary aspects of education. Typical modules include:

- Education Studies
- Children with Special and Additional Needs
- Learning and Assessment in Diverse Classrooms

### MAIN SUBJECT

Typical subject specific modules studied on the course include:

- Algebra for Teaching
- Applied Mathematics
- Topics in Teaching Mathematics
- Mathematics Project

### SUBSIDIARY SUBJECT

Alongside your Education Studies and Mathematics modules, you will study a subsidiary subject. Please refer to pages 44-47 for information on the available subsidiary subject options.

### PROFESSIONAL PRACTICE

Personal and professional learning is a core element of the degree programme, with an extensive professional placements element allowing you to gain experience in a range of formal (primary and post-primary schools or a FE college) and alternative education settings.

### A-level Requirements: BCC

For specific subject requirements and alternative qualifications see pages 32-33.

Duration: 4 years

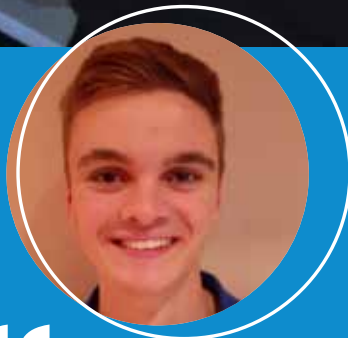
UCAS Code: XG10





# BEd POST-PRIMARY: RELIGIOUS STUDIES

Inclusion, respect for diversity and the development of critical openness towards a range of religious beliefs and practices are central to the Religious Studies programme. You will develop a deepening personal awareness and understanding of religion and religious issues, equipping you with the tools to become effective educators of Religious Studies. You will learn how to teach world religions and consider the contemporary debates relating to Religious Education on the post-primary curriculum. Students on the course come from a range of religious backgrounds or of no religion.



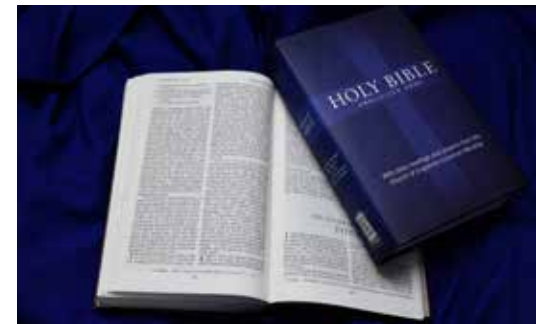
“

**Constantly learning and being challenged.**

Daniel Hamilton

”

## BEd POST-PRIMARY: RELIGIOUS STUDIES



### EDUCATION STUDIES

Education Studies is a constantly changing, diverse and exciting subject of study, exploring psychological, social, philosophical, historical and contemporary aspects of education. Typical modules include:

- Introduction to Education Studies
- Children with Special and Additional Needs
- Learning and Assessment in Diverse Classrooms
- Education Research

### MAIN SUBJECT

Typical subject specific modules studied on the course include:

- Biblical Studies: New Testament
- Islam and Judaism
- Reformation Church History
- Current Issues in Religious Education
- Philosophy of Religion and Ethics

### SUBSIDIARY SUBJECT

Alongside your Education Studies and Religious Studies modules, you will study a subsidiary subject. Please refer to pages 44-47 for information on the available subsidiary subject options.

### PROFESSIONAL PRACTICE

Personal and professional learning is a core element of the degree programme, with an extensive professional placements element allowing you to gain experience in a range of formal (primary and post-primary schools or a FE college) and alternative education settings.

### A-level Requirements: ABB

For specific subject requirements and alternative qualifications see pages 32-33.

**Duration: 4 years**

**UCAS Code: XVC6**





# BEd POST-PRIMARY: TECHNOLOGY AND DESIGN

On the Technology and Design course you will use new technologies and modern ways of thinking and learning to enable you to become a learning leader, discover how to integrate new technologies and raise awareness of the implications of technology. The use of computers as a design tool is encouraged, and you will have access to up-to-date CNC routers, lathe and milling machines, laser cutters and 3D printers. As an adaptable individual, you will develop new skills to teach others in an innovative way, including manufacturing, systems, graphics and CAD/CAM.



“

The modern facilities in Technology and Design help to ensure we are at the forefront of modern teaching and learning within the area.

Matthew Robinson

”

## BEd POST-PRIMARY: TECHNOLOGY AND DESIGN



### EDUCATION STUDIES

Education Studies is a constantly changing, diverse and exciting subject of study, exploring psychological, social, philosophical, historical and contemporary aspects of education. Typical modules include:

- Education Research
- Children with Special and Additional Needs
- Learning and Assessment in Diverse Classrooms

### MAIN SUBJECT

Typical subject specific modules studied on the course include:

- Manufacturing, Materials and Processes
- Systems
- Computer Aided Design
- Advanced Manufacturing, Materials and Processes
- Product Analysis, Design and Manufacture
- Systems Design: Mechatronics

### SUBSIDIARY SUBJECT

Alongside your Education Studies and Technology and Design modules, you will study a subsidiary subject. Please refer to pages 44-47 for information on the available subsidiary subject options.

### PROFESSIONAL PRACTICE

Personal and professional learning is a core element of the degree programme, with an extensive professional placements element allowing you to gain experience in a range of formal (primary and post-primary schools or a FE college) and alternative education settings.

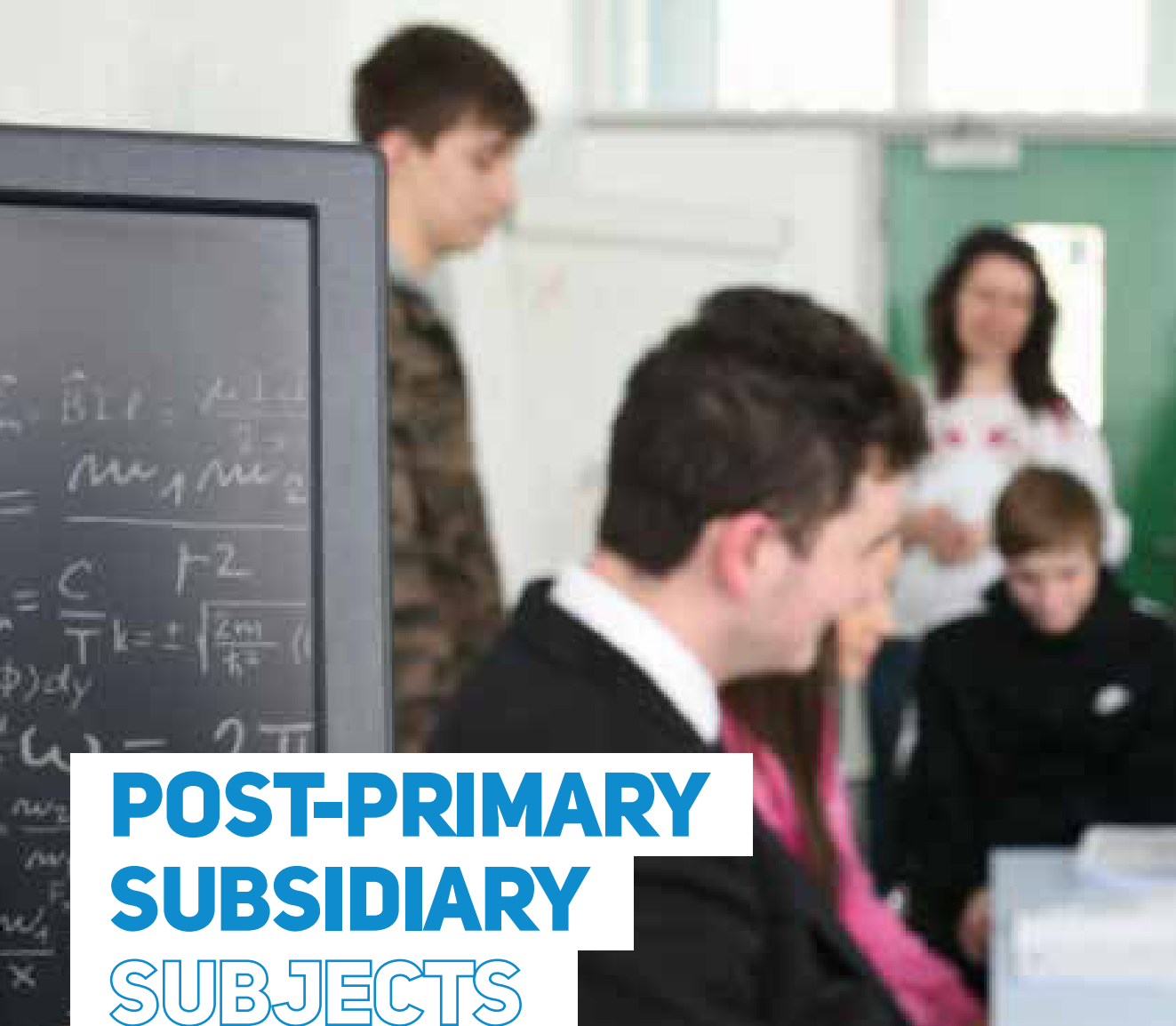
### A-level Requirements: BCC

For specific subject requirements and alternative qualifications see pages 32-33.

Duration: 4 years

UCAS Code: XW12





# POST-PRIMARY SUBSIDIARY SUBJECTS

## COMPUTER SCIENCE

Computing is rapidly increasing in significance and relevance for all our schools. To support the ever-growing IT sector, we need to inspire, enthuse and develop the next generation of young technologists. If you have an interest in IT, and are keen to learn new skills, Computer Science opens a world of opportunities.



### SUBSIDIARY SUBJECT MODULES

Typical subsidiary subject modules studied on the course include:

- Fundamentals of Computing Concepts
- Principles and Practices of Computing
- Computing Programming Concepts

## POST-PRIMARY SUBSIDIARY SUBJECTS

## ENGLISH

English is a keystone of the Northern Ireland Curriculum and students choose it as a subsidiary subject to broaden their employment opportunities and enable them to teach English to GCSE. The focus is on English Literature, where you will study a range of texts from poetry, prose and drama together with a practical drama and the Application of English, where you will explore the pedagogy of teaching English Language and English Literature. You will also be encouraged to develop your own skills as a writer.



### SUBSIDIARY SUBJECT MODULES

Typical subsidiary subject modules studied on the course include:

- Literature and Social Context
- Literary Studies

## KS3 SCIENCE

The Science subsidiary programme prepares students to teach all three sciences to Key Stage 3 (Year 10), considerably enhancing their employability as a graduate teacher. The programme is designed to extend your subject knowledge of Biology, Physics and Chemistry and nurture a passion for discovery and science enquiry. Teaching is informed by the latest theories on science education and employs student co-teaching techniques and video technology to further enhance your skillset.

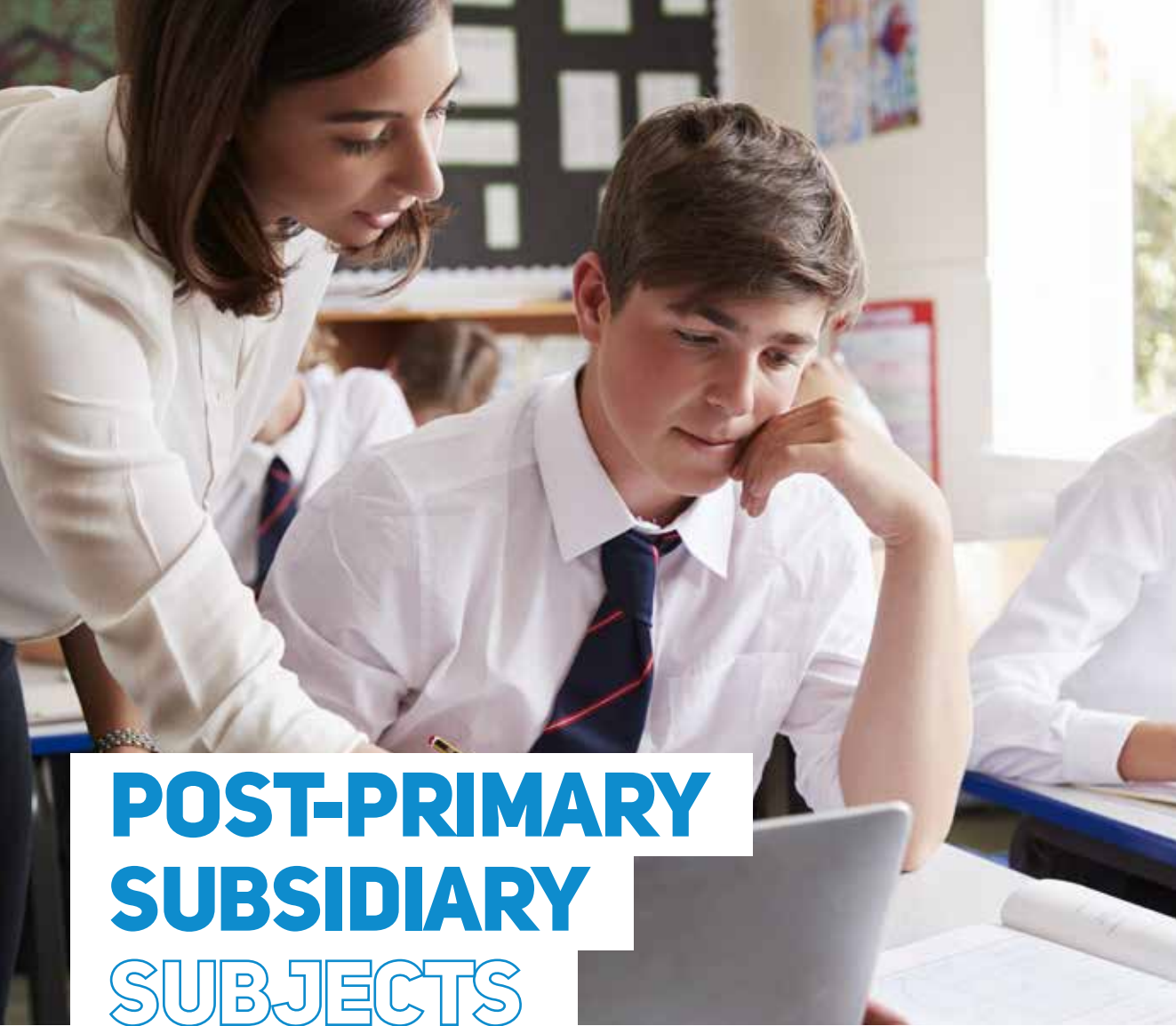


### SUBSIDIARY SUBJECT MODULES

Typical subsidiary subject modules studied on the course include:

- Foundations of Science Education at Key Stage 3
- Science Education at Key Stage 3





# POST-PRIMARY SUBSIDIARY SUBJECTS

## MATHEMATICS

If you enjoy and have an interest in mathematics, and would like to develop your skills in teaching mathematics, the level of mathematics studied on this subsidiary subject option will advance and deepen your understanding of mathematical concepts. Equally importantly, it will equip and empower you to teach mathematics lessons, ultimately making you more employable in an increasingly competitive job market.



### SUBSIDIARY SUBJECT MODULES

Typical subsidiary subject modules studied on the course include:

- Algebra for Teaching
- Topics in Teaching Maths

## POST-PRIMARY SUBSIDIARY SUBJECTS

## PHYSICAL EDUCATION

The modular content of the subsidiary PE programme covers a range of theory, including the philosophy of PE, curriculum studies and motor skills. The practical areas have a clear focus on developing competence to teach a range of activities which typically include games, athletics, health-related physical activity, swimming, gymnastics and dance. While many students have a PE qualification, no formal qualifications are required to study this programme, although an interest in PE is essential.



### SUBSIDIARY SUBJECT MODULES

Typical subsidiary subject modules studied on the course include:

- Physical Education – Foundation
- Physical Education – Development
- Physical Education – Applied

## RELIGIOUS STUDIES

This subsidiary subject option is designed to prepare students to teach religious studies and religious education up to GCSE level. The Religious Studies programme explores some of life's big questions and the moral choices humanity is facing in an increasingly complex world. What does it mean to be human? Does science make more sense than religion? Who is Jesus? Why is there pain and suffering in the world? The material covered includes the origins and beliefs of Christianity and Judaism, biblical theology and the life of Jesus as described in the Gospels.



### SUBSIDIARY SUBJECT MODULES

Typical subsidiary subject modules studied on the course include:

- Biblical Studies: Old and New Testament
- Philosophy and Christian Ethics





# BED (HONS) PRIMARY

On the BEd Primary degree programme, Education Studies, Curriculum Studies and Professional Practice provide the foundation for what you will be studying, providing an overview of education theory, policy and practice. You will also choose a specific area of specialism to study in more depth.



“

Art and Design specialism allows me to be creative whilst learning to teach.

Erin Park

”

## BED (HONS) PRIMARY



### EDUCATION STUDIES

Education Studies is a constantly changing, diverse and exciting subject, exploring psychological, social, philosophical, historical and contemporary aspects of education. Typical modules include:

- Education Research
- Children with Special and Additional Needs
- Learning and Assessment in Diverse Classrooms.

### CURRICULUM STUDIES

Curriculum Studies provides the necessary knowledge and understanding of all areas of the Northern Ireland Curriculum, helping to develop your intellectual, practical and transferable skills. Typical modules include Arts, STEM subjects, Physical Education, Religious Education and Personal Development and Mutual Understanding and World Around Us.

### AREA OF SPECIALISM

In Years 1-3, you will also study, in-depth, one of the specialist areas of learning from the following: Art and Design, Drama, English and Literacy, Geography and History, Maths and Numeracy, Music, Physical Education, Religious Education or Science and Technology.

### PROFESSIONAL PRACTICE

Personal and professional learning is a critical element of the degree programme, with an extensive professional placements element allowing you to gain experience in Foundation, Key Stage 1, Key Stage 2 and alternative education settings.

#### A-level Requirements: AAB

For specific subject requirements and alternative qualifications see pages 32-33.

Duration: 4 years

UCAS Code: X120





# EARLY CHILDHOOD STUDIES

The Early Childhood Studies programme is based on the concept of 'Educare'. It aims to investigate and advance a multi-professional approach to early childhood education and care services in Northern Ireland and beyond. The programme has been designed by professionals across the sector to meet the training needs of current and future practitioners. The course provides a broad understanding of how young children think, learn and develop.

## PATHWAYS

There are three pathways on the Early Childhood Studies programme:

- BA (Hons) Early Childhood Studies (full-time)
- BA (Hons) Early Childhood Studies (part-time)
- Foundation Degree Early Childhood Studies

## EARLY CHILDHOOD STUDIES



## HOW WILL I STUDY?

In addition to lectures, tutorials, workshops and individual/group projects, a substantial part of the teaching and learning process is delivered through your work-based placements.

## WHO WILL BE TEACHING ME?

On the Early Childhood Studies programmes, you will be taught, assessed and supported by an exceptional team of experienced practitioners, both in College and whilst on placement.

## HOW WILL I BE ASSESSED?

A variety of assessment methods are used, including critically reflective essays, individual and group projects and presentations, written examinations, assessment on placement and a final project.

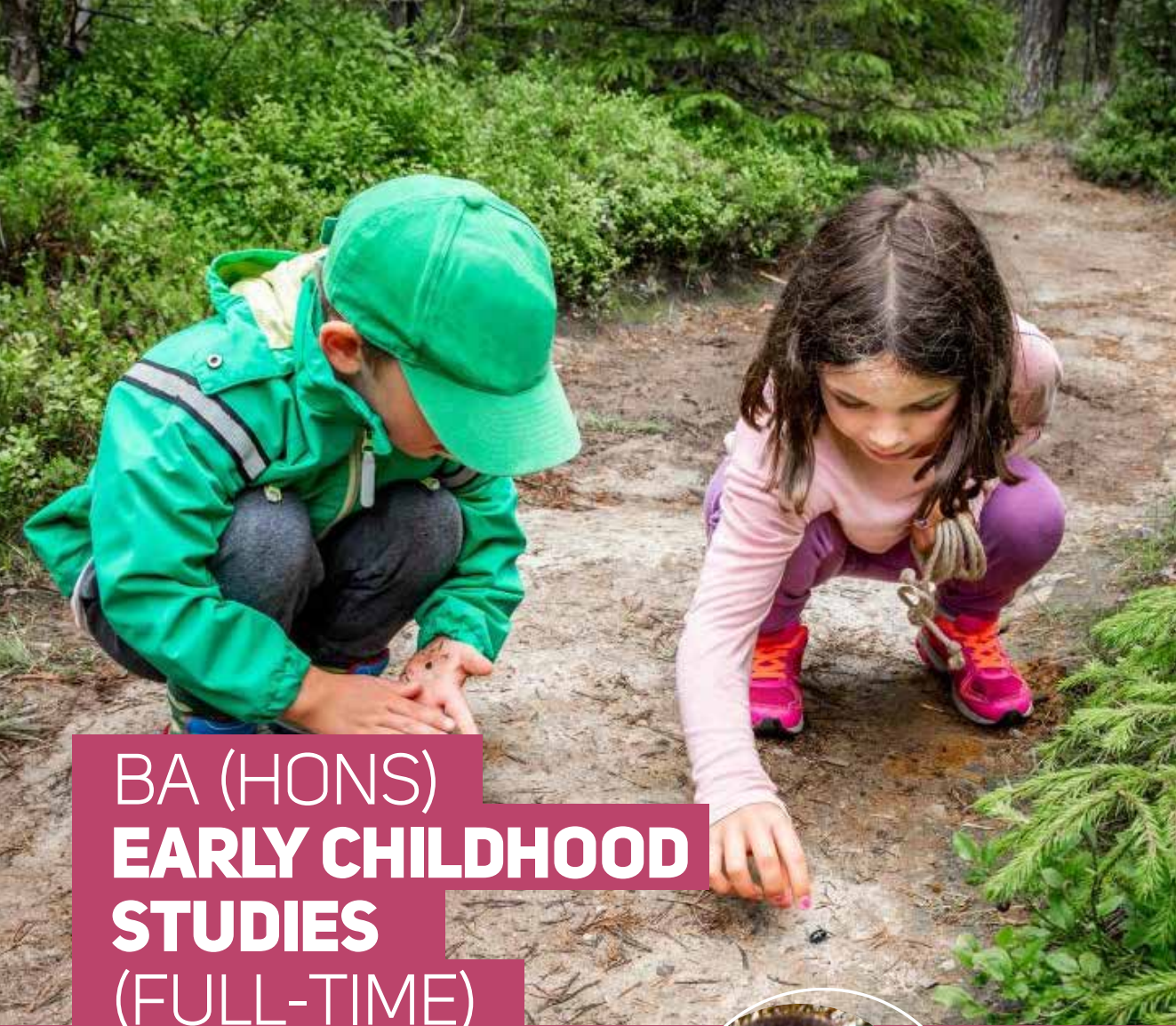
## PROFESSIONAL PRACTICE

Personal and professional learning placements with children aged between 0 and 8 years are a core element of all Early Childhood Studies pathways.

## CAREER PROSPECTS

An Early Childhood Studies degree forms a sound basis for career progression in the statutory, voluntary and private sectors of early years provision including early years organisations, nursery and primary schools, centres associated with the early years organisation, creches, parent and toddler groups and childcare and family centres.





# BA (HONS) EARLY CHILDHOOD STUDIES (FULL-TIME)

The full-time programme covers three core themes - Understanding the Child, The Child in the Learning Context and The Child in the Family and Community - taking account of the latest developments within the field of early childhood and reflecting the multi-professional and multidisciplinary nature of contemporary early childhood services.



“

The tutors are very approachable and offer valuable insight.

David Burke

”

## BA(HONS) EARLY CHILDHOOD STUDIES (FULL-TIME)



### TYPICAL COURSE MODULES

Examples of the type of modules studied on the course include:

- Children's Learning Intentions
- Social and Developmental Learning
- Childhood in Society
- Children's Health and Wellbeing
- Partnership with Children and Families
- Children in the Early Years Environment
- Management, Leadership and Professionalism
- Early Years Curriculum (3-8 Years)
- Curiosity and the Child.

### PROFESSIONAL PRACTICE

Personal and professional learning is a core element of the degree programme and you will have the opportunity to gain experience in a variety of early years settings with children between 0 and 8 years.

### STUDY ABROAD

In Year 2, you will have the opportunity to spend a semester studying and undertaking professional practice at one of our international partner universities.

### A-level Requirements: BBB

For specific subject requirements and alternative qualifications see pages 32-33.

Duration: 3 years

UCAS Code: X310





# BA (HONS) EARLY CHILDHOOD STUDIES (PART-TIME)

The 4 year part-time degree is ideal for those already working in the sector or looking for a degree programme that works around their individual circumstances. The pathway covers all of the material on the full-time programme. Before commencing, students must have arrangements in place for their work-based profession placements through employment or negotiated access. The part-time programme is offered at Stranmillis and South West College (Omagh).



“

How would I describe Stranmillis – like a family.

Zara McNally

”

## BA(HONS) EARLY CHILDHOOD STUDIES (PART-TIME)



### TYPICAL COURSE MODULES

Examples of the type of modules studied on the course include:

- Children's Learning Intentions
- Social and Developmental Learning
- Childhood in Society
- Children's Health and Wellbeing
- Partnership with Children and Families
- Children in the Early Years Environment
- Management, Leadership and Professionalism
- Early Years Curriculum (3-8 Years)
- Curiosity and the Child.

### PROFESSIONAL PRACTICE

During your studies, you will be expected to maintain access to young children (between 0 and 8 years) in a structured setting through employment or negotiated access. It is advised that this should be for a period of no less than 7 – 10 hours per week.

### STUDY ABROAD

You will have the opportunity to spend a semester studying and undertaking professional practice at one of our international partner universities.

### A-level Requirements: BBB

For specific subject requirements and alternative qualifications see pages 32-33.

Duration: 4 years

UCAS Code: Apply direct to SUC





# FOUNDATION DEGREE EARLY CHILDHOOD STUDIES

The Foundation Degree is designed to provide you with the specialist knowledge and understanding of working with 0-8 year olds, focussing on the key theories, concepts and application of working practices and skills required to work with this age group in a variety of Early Years settings.

## LOCATIONS

This course can be studied full-time (2 years) or part-time (3 years) depending on location:

- Belfast Metropolitan College
- North West Regional College (Londonderry/Derry)
- Northern Regional College (Ballymena and Newtownabbey)
- South Eastern Regional College (Lisburn)
- South West College (Omagh)
- Southern Regional College (Newry)

## FOUNDATION DEGREE **EARLY CHILDHOOD STUDIES**



## TYPICAL COURSE MODULES

Examples of the type of modules studied on the course include:

- Child Development
- Acquisition of Language and Communication Skills
- Learning through Play
- Safeguarding Children
- Developing Skills and Strategies for Managing Children's Behaviour
- Working with Children with Additional Needs
- Anti-Discriminatory Practice and Inclusion in the Early Years Environment
- Working with Babies 0-3 Years

## PROFESSIONAL PLACEMENTS

A varied programme of professional placements complement and support your classroom learning.

## PROGRESSION

Graduates who achieve the desired academic standard may be eligible for progression to Year 2 of the BA (Hons) Early Childhood Studies degree (full-time or part-time) at Stranmillis University College.

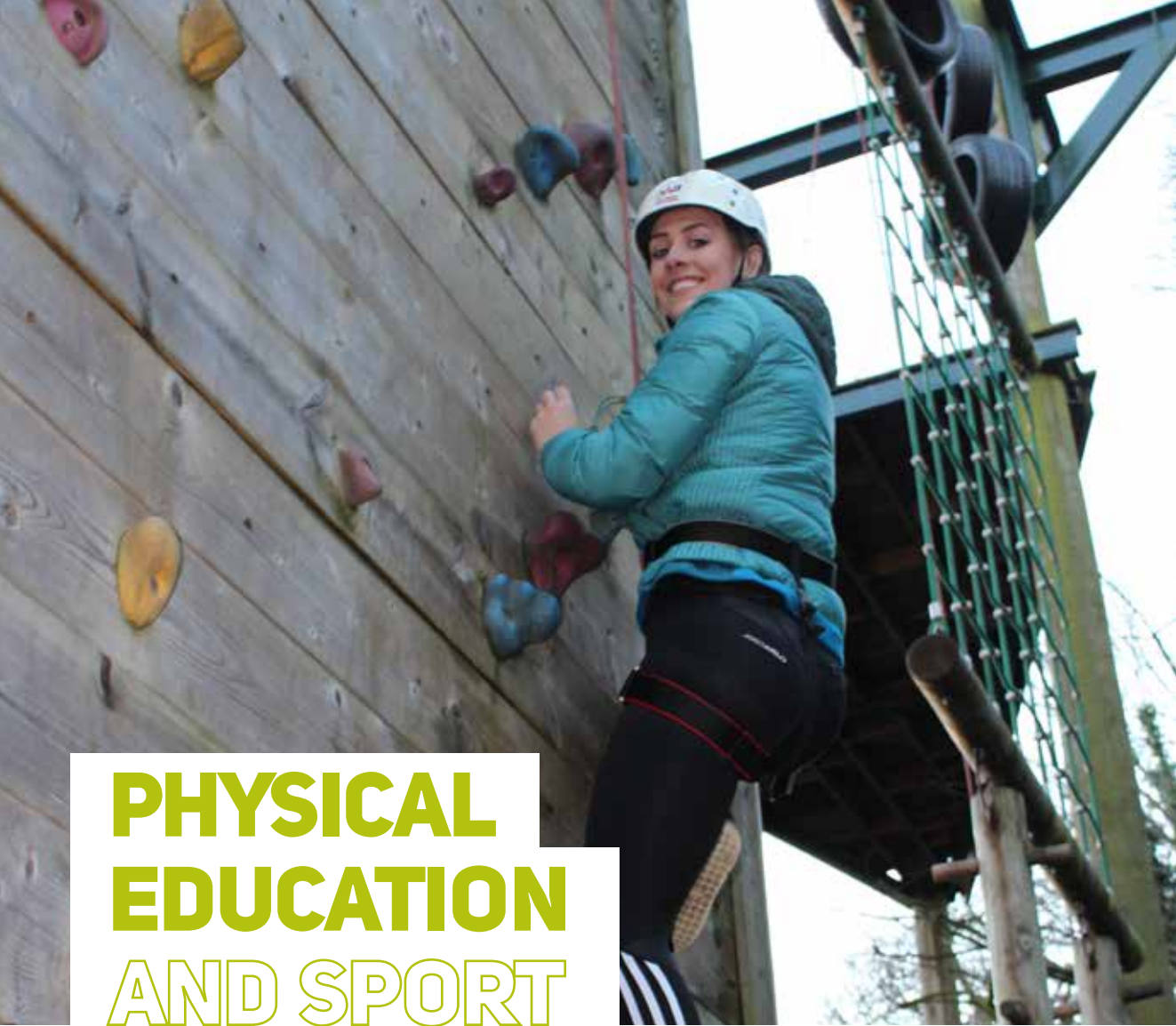
## A-level Requirements: CC

For specific subject requirements and alternative qualifications see pages 32-33.

**Duration: 2/3 years**

**UCAS Code: LX53**





# PHYSICAL EDUCATION AND SPORT

Improving physical activity rates, active lifestyles and health promotion are strategic priorities that impacts the social and economic wellbeing of communities and societies as a whole. A multidisciplinary programme, the Physical Education and Sport degree is aimed at those looking for a rewarding career working with young people and wider communities in this growing and important sector. The course explores the sociological, psychological and scientific concepts of health, nutrition, physical activity and sport.

## PATHWAYS

There are two pathways on the Physical Education and Sport programme:

- BSc (Hons) Physical Education and Sport
- Foundation Degree Physical Education and Sport

## PHYSICAL EDUCATION AND SPORT



## HOW WILL I STUDY?

In addition to lectures, tutorials, workshops, practical physical education sessions and individual/group projects, you will undertake a programme of relevant work placements.

## WHO WILL BE TEACHING ME?

In college and on your professional placements, you will be taught, assessed and supported by an exceptional team including internationally recognised, research-informed and experienced practitioners

## HOW WILL I BE ASSESSED?

A variety of assessment methods are used, including critically reflective essays; individual and group projects and presentations; written examinations; assessment on placement; and a final dissertation.

## PROFESSIONAL PRACTICE

Personal and professional learning is a core element of both programmes and alongside your studies you will undertake a programme of relevant work placement.

## CAREER PROSPECTS

The transferable skills developed on the course enable students to pursue careers in a wide range of sectors and settings including, Health Promotion, Physical Activity and Sport, Community Development, Educational Centres and Welfare, Youth Services and Coaching and Physical Education (Primary and Post-primary).





# BSc (HONS) PHYSICAL EDUCATION AND SPORT

The BSc (Hons) Physical Education and Sport is an innovative, multidisciplinary course which seeks to enhance the skills and expertise of those wishing to further their careers within the areas of health promotion, education or a range of opportunities in the field of sport. The key areas studied include health promotion, psychology of physical activity, exercise physiology, nutrition, sports development and practical physical education.



“

The many different ways I am taught provide great variety to my studies.

Rhys Dale

”

## BSc (HONS) PHYSICAL EDUCATION AND SPORT



### TYPICAL COURSE MODULES

Examples of the type of modules studied on the course include:

- Sport and Exercise Psychology
- Practical studies in PE and Sport
- Exercise Science
- Sociology of Health and Sport
- Body Systems
- Contemporary Issues in Health
- Sports Nutrition
- Sport in the Community
- Health Promotion and Professional Practice.

### PROFESSIONAL PRACTICE

A varied programme of relevant professional placements complement and support your classroom learning.

### STUDY ABROAD

In Year 2, you will have the opportunity to spend a semester studying and undertaking professional practice at one of our international partner universities.

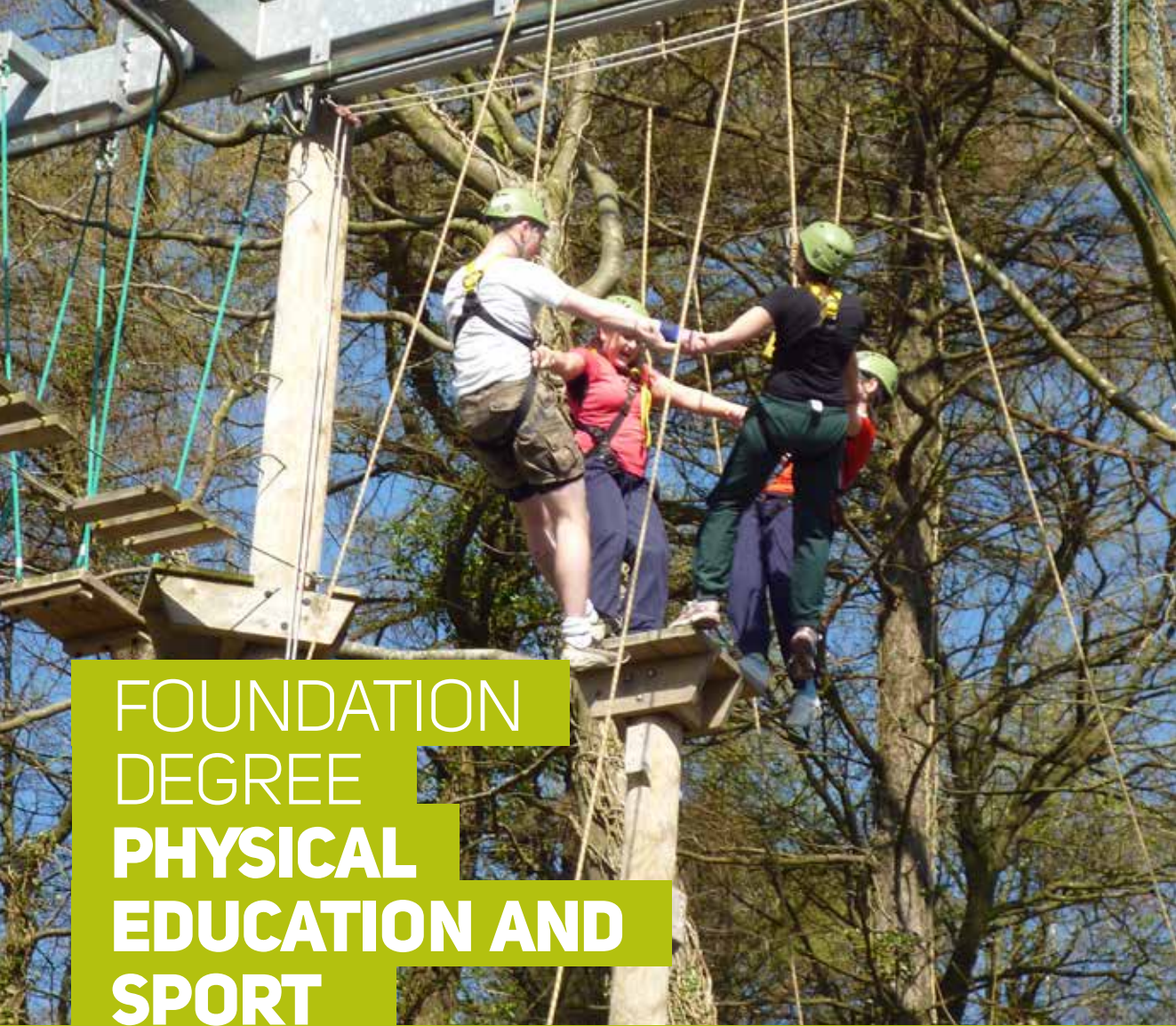
### A-level Requirements: BCC

For specific subject requirements and alternative qualifications see pages 32-33.

**Duration: 3 years**

**UCAS Code: LL34**





# FOUNDATION DEGREE PHYSICAL EDUCATION AND SPORT

The programme consists of 12 compulsory modules, including a Research Project. A range of work-based placements, opportunities to volunteer at live sporting events and project-based assessments complement your academic studies.

## LOCATION

The Foundation Degree Physical Education and Sport is a two year, full-time course delivered at Belfast Met.

## FOUNDATION DEGREE **PHYSICAL EDUCATION AND SPORT**



## TYPICAL COURSE MODULES

Examples of the type of modules studied on the course include:

- Physical Activity, Lifestyle and Wellbeing
- Physical Activity and Sport for Specific Groups
- Introduction to Management Health, Physical Activity and Sport
- Fitness Testing and Training
- Introduction to Health, Sport and Exercise Psychology
- Anatomy and Physiology for Sport and Health
- Applied Health, Sport and Exercise Psychology Event Management

## PROFESSIONAL PRACTICE

A programme of relevant professional placements complement and support your classroom learning..

## PROGRESSION

Graduates who achieve the desired academic standard may be eligible for progression to Year 2 of the BSc (Hons) Physical Education and Sport at Stranmillis University College.

### A-level Requirements: CC

For specific subject requirements and alternative qualifications see pages 32-33.

**Duration: 2 years**

**UCAS Code: 52L7**



# AN INVESTMENT IN YOUR FUTURE

Choosing to go to university is an investment in your future. A higher education qualification may lead to increased career prospects and earning potential, plus, the opportunity to study a subject you are interested in – leading to a more rewarding career.

## STUDENT SATISFACTION



Stranmillis was ranked 1st in Northern Ireland, and 6th in the UK, for student satisfaction (NSS 2020).



## STUDENT SUCCESS

We are proud to have a student success rate of 95%.



## EMPLOYABILITY

Our graduates are highly sought after, with 97% in employment or further study fifteen months after graduation.



## ACADEMIC STANDARDS

The UK Quality Assurance Agency reports the highest level of confidence in academic standards.



## ACADEMIC STAFF

71% of our academic teaching staff are qualified to doctoral level.



## RESEARCH EXCELLENCE

72% of research outputs deemed internationally excellent (REF 2014).

## HOW MUCH DOES IT COST?

Student fees payable are dependent on the 'residency' status of each student. The 2022-23 Academic Year tuition fees are as follows:

	Residency Status			
	Northern Ireland and ROI	Great Britain (GB)	EU Other*	International
Full-time undergraduate	£4,630	£9,250	£17,900	£17,900
PGCE	£4,630	£9,250	£18,200	£18,200

\*EU Other - Students from the EU (excluding the Republic of Ireland), other EEA and Swiss nationals and their family members.

Part-time undergraduate tuition fees 2022-23 have not been confirmed at the time of print but are estimated as follows:

BA Early Childhood Studies	NI/GB/ROI	NI/GB/ROI Total Cost	EU Other* / International	EU Other* / International Total Cost
Year 1 - 3	4 modules (20 CATs points per standard module)	£1,224 (£306 per module)	4 modules (20 CAT points per standard module)	£11,936 (£2,984 per module)
Year 4	4 modules plus dissertation	£1,836	4 modules plus dissertation	£17,900

\*EU Other - Students from the EU (excluding the Republic of Ireland), other EEA and Swiss nationals and their family members.

All fees are normally subject to an annual inflationary increase. The latest financial information is available on the College website.

## TUITION FEE PAYMENT METHODS:

Course fees can be paid by:

**Tuition Fee Loan/Grant:** Eligible Students can apply to Student Loan Company (SLC) for a tuition fee loan. Contact your local Student Finance Authority for further information.

**Pay in full at enrolment:** Tuition fees may be paid by cheque, debit/credit card or bank transfer.

**Direct Debit:** A 25% non-refundable minimum payment by bank transfer, debit/credit card or cheque, is due on/ before registration and enrolment, along with a signed Direct Debit mandate. The remaining balance will then be collected in equal instalments.

**Sponsor:** You may have an agreement with a sponsor, e.g. your employer, that they will financially support all or part of your studies for the academic year. Any remaining balance must be paid in full at enrolment and registration by cheque, debit/credit card or bank transfer.

## MAINTENANCE LOANS AND GRANTS:

A Student Maintenance Loan and/or Grant is available to eligible students to help with day-to-day living costs whilst you are at university. The maximum amount you can get depends on a number of factors such as household income, whether you are living at home or away from home, and whether you are an independent student. Maintenance loans are added to any other student loan taken and are repayable. Grants are not repayable. For more information, contact your local Student Finance Authority.

## REPAYMENT OF STUDENT LOANS:

When you begin employment and are earning over the Student Loan Company threshold for repayment, the amount you repay will be linked to your income. Once you earn over £19,895 a year (relating to 2021-22 Plan 1 – other plans will have different thresholds), you will repay 9% of anything over this amount. If your income is below £19,895, or drops to below that amount, you will not have to make any repayments. The time required to repay a loan is based on income and amount borrowed, not on a fixed time period as with commercial loans. For further information, please visit the Student Loans Company website.



## BURSARIES AND FINANCIAL SUPPORT - 2022-23

A range of bursaries and financial support funds are available to assist students who meet certain criteria.

### STRANMILLIS UNIVERSITY COLLEGE FINANCIAL BURSARY

A means-tested bursary of £500 per year is available to all full-time students, where the household income is less than £19,203 (household income threshold for 2022-23 is still to be confirmed). The bursary is not repayable.

### HALLS ACCOMMODATION BURSARY - 50% CONTRIBUTION TO THE COST OF A STANDARD ROOM

Stranmillis University College offers a limited number of 'Halls Accommodation Bursaries' for eligible students from certain priority groups. All applicants must be eligible to receive the Stranmillis University College Financial Bursary and will need to outline how their educational progress would be enhanced by receiving a 50% contribution to the cost of a standard room in our Halls of Residence rather than e.g. continuing to study whilst based at home. The scheme is open to all full-time students (students taking the equivalent of a minimum of 120 CATS points) studying on the Stranmillis campus. In the event of more applications being received than places available, some, or all, of the following additional criteria will be applied:

- be in receipt of the Disabled Students' Allowance
- have a mobility disability (not a learning disability) but not in receipt of the Disabled Students' Allowance.
- students living furthest away from College (using Google Maps) will be given highest priority.
- first person in their immediate family (i.e. parent/guardian/sibling) to go into Higher Education;
- the postcode of the areas of socioeconomic deprivation would be ranked from neediest to least needy.

### CARE EXPERIENCED STUDENTS

Verified Care Experienced students are eligible for a free Halls of Residence place for the duration of their course (no means testing applies to this priority group i.e. they do not need to be entitled to a Stranmillis University College Financial Bursary). Students must apply each year for a free Halls of Residence place.



A Care Leaver Study Support Bursary is also available for verified Care Experienced students at the following rates:

- £600 in first year
- £800 in second year
- £1,000 in third year
- £1,000 in final year for those enrolled on a four year degree
- £500 Graduation Award to assist with transition into employment or postgraduate study.

### STUDENT SUPPORT FUND

A Student Support Fund is also available to assist students who may otherwise be prevented from entering Higher Education. To be eligible to receive an award from this Fund, students must have availed of all available financial support and loans administered by SLC. Students must also demonstrate that they are experiencing financial hardship. Student Support Fund awards are not repayable by the student.

### OTHER FINANCIAL SUPPORT

Local Education Authorities can assist with a range of further financial support dependent on the applicant's personal circumstances. We would encourage all students to contact their local Education Authority as early in the process as possible.

For further information, please see <https://www.stran.ac.uk/courses/fees-and-finance/> or contact the University College Finance Office – [studentfinance@stran.ac.uk](mailto:studentfinance@stran.ac.uk)

# APPLICATIONS AND ADMISSIONS

## HOW TO APPLY

Applications for full-time undergraduate courses are made through the Universities and Colleges Admission Service (UCAS). Application for the BA Early Childhood Studies (part-time) and PGCE Early Years are made directly to Stranmillis University College. Institution code name:

**Institution code name: SUCB**

**Institution code: S79**

## WHEN TO APPLY

Applications made through UCAS for 2023 entry open in September 2022. The closing date for receipt of applications made through UCAS is 25 January 2023 (18:00). The closing date for receipt of application forms for 2023 entry to the BA Early Childhood Studies (part-time) is 01 March and PGCE Early Years is 01 February.

## GENERAL ENTRANCE REQUIREMENTS

At minimum, entrants must be able to satisfy the general entrance requirement of Queen's University. A-level entry requirements for each course are outlined in the relevant course pages. For the PGCE Early Years, the minimum requirement for admission is an upper second class (2:1) honours degree in the area of early years or a degree with significant early years content.

## ENHANCED ACCESSNI CHECK

It is a requirement that applicants who are accepted onto all undergraduate degrees and the PGCE Early Years programme at Stranmillis University College undergo an enhanced AccessNI check. This is administered by the University College and carried out by AccessNI. Please note that for full-time BA and BED students this check is carried out at the beginning of first and third year. The University College acknowledges the key role of education in the rehabilitative process, and a criminal record will not debar an applicant unless the nature and seriousness of the offence in question are incompatible with: 1. The course applied for 2.

The ultimate professional or vocational goal; or 3. Participation in an academic and social setting and the university's responsibility to ensure a safe and neutral environment.

## DEFERRED ENTRY

The University College does not accept applications from students who wish to defer.

## MATURE STUDENTS

Stranmillis University College welcomes applications from mature students who have interrupted their studies for several years or did not have the opportunity to enter higher education. We require evidence of recent academic study. The qualifications most frequently offered by such candidates are Access courses, A-levels, diplomas, Foundation Degrees and Open University credits.

## DISABILITY, MEDICAL CONDITION OR SPECIAL NEED

Stranmillis University College encourages applications from students with disabilities and endeavours to make sure that individual requirements are met. Deciding to disclose a disability can be a difficult choice for students applying to university. While we accept this to be a personal decision, we strongly recommend that applicants inform us in order that individual requirements can be addressed so that appropriate support is made available from the commencement of the course. Please be assured that disclosure of disability information or support requirements will not adversely influence any application or indeed the application process. The information you provide will be treated as sensitive and kept strictly confidential. It will only be used to plan for your individual support requirements ensuring that your transition to Stranmillis University College is as smooth as possible. If you need any guidance about disclosing disability, or the arrangements which we can make, please contact: Student Support and Wellbeing on **(028) 9038 4510** or email: [disabilityservices@stran.ac.uk](mailto:disabilityservices@stran.ac.uk)



# APPLICATIONS AND ADMISSIONS

## MEDICAL FITNESS

All candidates who have accepted a firm offer of a place on any course must complete and return a declaration of health. In the light of the replies given, the University College medical officer will classify the candidate as fit, or seek specialist advice before classifying a candidate as either fit or unfit.

## ACCURACY

Stranmillis University College is concerned at all times to evaluate its courses in the light of statutory obligation, accreditation requirements and responses from staff, students and teachers – and to make improvements where they are considered to be appropriate. Changes to programmes, modules, and services may be necessary; for example, to meet the requirements of an accrediting body or to keep courses current as a result of research and development. Changes to programmes may also be necessary due to circumstances outside the reasonable control of the University College, such as a key member of staff leaving the University College or being unable to teach or where there are too few students for a module(s) to be viable and to ensure the student experience the University College aims to provide. If changes to your programme are made after you have accepted your offer, the University College will notify you of such changes and will aim to minimise any disruption to you by offering suitable alternative arrangements or by helping you to find an alternative module(s).

## TERMS AND CONDITIONS

When you are offered a place on an undergraduate or postgraduate taught course delivered at the University College you will be notified of the terms and conditions between the University College and students on our taught programmes of study. When you accept an offer of a place on a programme at the University College, a contract is formed between you and the University College on the basis of the terms and conditions. You should read the terms and conditions carefully before accepting any offer. On the day you accept an offer from the University College the contract will be formed and a 14-day cooling-off period will begin.

## ADMISSIONS PROCESS - BED AND BA (FULL-TIME) PROGRAMMES

Academic Registry receives applications directly from UCAS. Applications are considered on the basis of the information provided. It is the responsibility of the applicant to ensure that complete detail is provided. All applications must contain a reference otherwise they will not be considered. All fully completed applications submitted by the normal closing date of 15 January are given equal consideration. Applications received after this date will not be considered.

### STEP 1 – REVIEW OF ACADEMIC PROFILE

All applicants must have a minimum C grade in GCSE English and Mathematics (refer to page 32 for full GCSE requirements). If an applicant is attempting to achieve the GCSE subject requirements in the year of application, this must be demonstrated in the UCAS application. Please note that Level 2 Essential Skills Numeracy and Application of Number is not acceptable in lieu of GCSE Mathematics. Level 2 Essential Skills Communication is acceptable in lieu of GCSE English. An unsuccessful decision will be processed against an application that does not meet the GCSE requirements. Applicants that have already completed A-levels (or equivalent level 3 qualifications) but do not precisely meet or fall slightly below the entry requirements, may still be shortlisted for interview, but will not initially receive an offer. Such applicants may be reconsidered in August, assuming the required interview score has been achieved and depending upon availability of places.

### STEP 2 – REVIEW OF UCAS PERSONAL STATEMENT

All applicants who meet the initial academic criteria will have their personal statement reviewed by a member of staff in Academic Registry. A personal desire and motivation for teaching (BED) or working with young children (BA) must be evident in your personal statement. You will be required to demonstrate this by providing examples of working with children in a structured environment, preferably in a nursery, primary or post-primary school classroom setting.

An unsuccessful decision will be processed for any applicant that does not demonstrate this evidence in their personal statement.

### STEP 3 – INTERVIEW AND PRESENTATION

Applicants that pass the first two steps of the process will be invited to take part in an interview and presentation. Applicants will be notified of their interview date at least one week beforehand. You will also be provided with the presentation topic at this time. Interviews are held on various dates in February and March. The interview will be conducted by a panel of two, normally comprising a member of academic staff from Stranmillis University College and a current/retired education professional. The presentation will be followed by a short interview during which the interviewers will ask you a number of set questions. The interview, including the presentation, will last approximately 20 minutes. Both the interview and the presentation are scored out of 20 giving a total possible score of 40.

### STEP 4 – OFFERS

Offers are made on the basis of ranked interview and presentation score and verification of qualifications. Academic Registry aims to have offers processed on UCAS before the 31st of March, however, the final UCAS deadline for 'on time' applications is 19th May.

### ADMISSIONS PROCESS - BA EARLY CHILDHOOD STUDIES (PART-TIME)

For the BA Early Childhood Studies (part-time) degree, Step 3 – Interview and Presentation is replaced by a Group Presentation.

### GROUP INTERVIEW

Applicants who pass the first two steps of the process will be invited to take part in a group interview. Applicants will be notified of their interview date at least one week beforehand. You will also be provided with the presentation topic at this time. BA Early Childhood Studies (part-time) group interviews will take place in May 2023. The interviews will be conducted by a panel of two academic staff from Stranmillis

University College. All entrants to the part-time degree must be able to demonstrate that they can obtain a placement with young children in a structured setting either through employment or negotiated access. It is advised that this should be for a period of no less than 7-10 hours per week. Candidates interested in Early Childhood Studies should note that the BA Early Childhood Studies (full-time) degree is very popular and each year the number of applicants greatly outweighs the number of places available. However, the four-year BA (Hons) Early Childhood Studies (part-time) degree programme is not subject to restricted numbers.

### ADMISSIONS PROCESS - BSc PHYSICAL EDUCATION AND SPORT

Applicants should note that there is no interview and presentation stage to the admissions process for the BSc Physical Education and Sport degree. An applicant's GCSE/AS-level profile is taken into account when deciding on whether or not to make conditional offers.

### ADMISSIONS PROCESS - FOUNDATION DEGREES

Applications for the full-time Foundation Degree Early Childhood Studies are made via UCAS. Applications for the part-time option should be made directly to the relevant Regional College. Applications for the Foundation Degree Physical Education and Sport are made via UCAS.





**STRANMILLIS  
UNIVERSITY COLLEGE**

Stranmillis Road, Belfast, BT9 5DY  
Northern Ireland, United Kingdom

T: **+44 (0)28 90381271**  
**[www.stran.ac.uk](http://www.stran.ac.uk)**