

STRANMILLIS  
UNIVERSITY COLLEGE

A College of Queen's University Belfast



YOUR **FUTURE** AWAITS



UNDERGRADUATE  
**PROSPECTUS**  
**2026**

# WHY CHOOSE STRANMILLIS?



## Study at a World-Class Institution

As a specialist University College of Queen's University Belfast, a member of the prestigious Russell Group, you'll be studying at a globally recognised institution ranked in the top 1% of universities worldwide.

## Exceptional Graduate Employability

Stranmillis graduates boast the highest full-time employment rate of any higher education provider in Northern Ireland, ensuring a strong start to your professional career.

## On-Campus Accommodation

Our beautiful EcoCampus offers excellent value for money with high-quality, catered student accommodation, making student living both comfortable and affordable.

## High Student Satisfaction

In the National Student Survey, Stranmillis consistently ranks as one of the top performers for excellence in student satisfaction.

## Vibrant Students' Union

Our award-winning Students' Union, named Best Small Students' Union in Ireland for two consecutive years, offers a vibrant, active student community.

## Broaden your Horizons

We offer all our students the opportunity to participate in life-changing study abroad experiences, allowing you to broaden your perspectives and enrich your university journey.

## A Supportive Community

At Stranmillis, you're more than just a student number; you're part of a close-knit, supportive community where you are valued and empowered.

## Outstanding Student Support

We prioritise student wellbeing with exceptional student support services that cater to your academic and personal needs.

## Learn from Recognised Experts

Your teaching and learning is delivered by an academic team of recognised experts, with a passion and dedication to inspire and mentor the next generation of educational leaders.

# CONTENTS

i-ii	Why Choose Stranmillis?
iii	Contents
01	Your Journey Starts Here
02-03	Stranmillis: A Place For You
04-05	The Students' Union: On Your Side, By Your Side!
06-07	Stran Halls: A Complete Package
08-09	Excellence in Teaching Welcome to a Different Way of Learning
10-11	Prepared to Succeed: Supporting Your Career Path
12-13	Go Global: Explore the World
14-15	Supporting You: Students at the Centre
16-19	Student Voices: What Our Students Have To Say?
20	Research Excellence: A Commitment To Best And Next Practice
21	Explore Our Courses
22-23	UNDERGRADUATE ENTRANCE REQUIREMENTS 2026
24-25	EARLY CHILDHOOD STUDIES
26-27	BA (Hons) Early Childhood Studies (Full-time)
28-29	BA (Hons) Early Childhood Studies (Part-time)
30-31	Foundation Degree Early Childhood Studies
32-33	INITIAL TEACHER EDUCATION
34-35	BEd (Hons) Post-primary: Business and Enterprise
36-37	BEd (Hons) Post-primary: Mathematics
38-39	BEd (Hons) Post-primary: Religious Studies
40-41	BEd (Hons) Post-primary: Technology and Design
42-45	Post-primary Subsidiary Subjects
46-47	BEd (Hons) Primary
48-49	PHYSICAL EDUCATION AND SPORT
50-51	BSc (Hons) Physical Education and Sport
52-53	Foundation Degree Physical Education and Sport
54-55	Applications and Admissions
56-57	Fees and Finance
58-59	Applying to Stranmillis: Timeline



## YOUR JOURNEY STARTS HERE

Choosing where to go to university is a big decision, and we're thrilled you're considering Stranmillis. This prospectus will hopefully give you an insight not just into the courses on offer but what it means to be a Stranmillis student.

For over 100 years, we have been at the forefront of education, shaping educational policy and practice and making an impact globally. Our degree programmes aim to empower our students to make a real world difference in the lives of children and young people.

As a College, we are committed to excellence in our teaching, our learning and our research. But studying at Stranmillis won't just be about attending lectures. You'll be part of a vibrant community that's making a real impact. From extensive work placements to study abroad options, your time at Stranmillis will be packed with opportunities to grow academically, personally, and professionally.

That's why our students thrive and are highly sought after and why our graduates have the highest levels of full-time employment. It is also why Stranmillis consistently ranks so highly for overall student satisfaction.

We hope you'll choose to start your university journey with us. For our students, Stranmillis is more than just an education; it's a transformative experience. We can't wait to welcome you to Stranmillis to help you make the most of this exciting new chapter in your life and achieve your dreams!

**Professor Jonathan Heggarty**  
MBE, BSc (Hons), PhD, PGCFHE, MCGI  
Principal and CEO





## STRANMILLIS A PLACE FOR YOU



Welcome to a place where you can learn, grow, and thrive, a place where learning is an adventure and your unique talents are nurtured and celebrated. Set within a peaceful wooded campus, but only minutes from the heart of Belfast, Stranmillis is a sanctuary where lifelong connections are made and you'll experience a real sense of belonging.



### The Perfect Mix of City and Campus Life

Our beautiful campus, located in Belfast's Queen's Quarter, combines the best of both worlds. You'll have access to all the culture, nightlife and excitement the city offers while enjoying a peaceful, supportive campus environment.

### Express Yourself

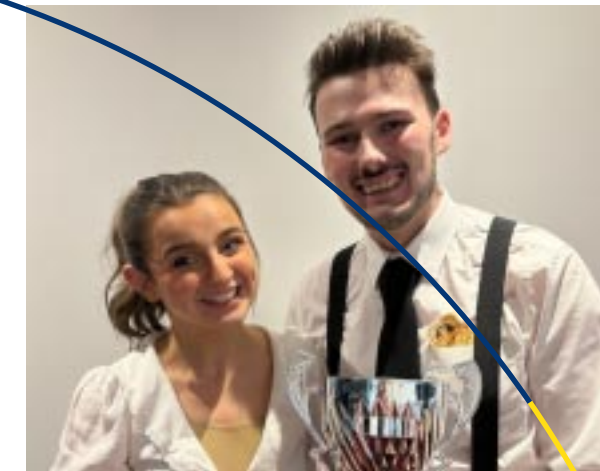
Whether you're into art, music, drama, or sports, Stranmillis has the facilities and societies to help you showcase your talents. From performing in panto to playing sports, there's something for everyone.

### Join the Fun

Get involved in one of the many clubs and societies, stay active with on-campus sports facilities, or explore the local area's cycling and walking trails. With events like Stran Does Strictly and the Back to School Bop, there's never a dull moment.

### Take a Break

When you need to unwind, grab a coffee at Betty's Coffee Shop or relax in the peaceful green spaces around campus. Whether you're hanging out with friends or enjoying some quiet time, you'll find the perfect spot to recharge.







## THE STUDENTS' UNION ON YOUR SIDE, BY YOUR SIDE!

Your student experience is about more than just studying. Our award-winning Students' Union is the heart of campus life, offering support, fun, and opportunities to get involved. From advocating for your rights to hosting amazing events, the SU is here to make your university experience memorable.

### Be Active, Be Involved

Whether you're into sports, arts, or social causes, the Students' Union has a club or society for you. From Freshers' Week to acoustic nights, there's always something happening. Dive in, make friends, and have a blast!

### Be Heard, Be Supported

The SU is more than just fun and games; they're also here to support you. From academic advice to mental health resources, they're on your side every step of the way.

### Make a Difference

The Union is committed to making a positive impact through charity events, volunteering, and raising valuable funds for the SU's chosen charities and creating lasting legacies that are positively changing the lives of communities in India and Uganda.

### Inclusive Community

As a college, Stranmillis is committed to and celebrates diversity and inclusivity. The Students' Union fosters a vibrant community where every student is valued and supported, making it a cornerstone of your Stranmillis experience.







## STRAN HALLS A COMPLETE PACKAGE

Stran Halls provides a unique accommodation package including room, food, utilities, Wi-Fi and more – providing exceptional value in catered, on-campus accommodation. But living in halls is more than just a place to stay; it's a vibrant student hub where lifelong friendships are made and memories created.



### Your Home Away from Home

Choose from our modern single occupancy rooms, with the option of shared or ensuite bathrooms. Each flat has a communal kitchen and communal space, where you can hang out with friends.

### Your Wellbeing

Your wellbeing matters. Our halls team is here to help you settle in and make the most of your time at Stranmillis. As well as on-campus entertainment, you can enjoy free gym membership (induction fee applies) and free evening short courses.



### Prime Location

Nestled in our stunning EcoCampus, Stran Halls is a safe, secure location, just a short walk from the student quarter and city centre. With excellent transport links, you're never too far from the action.

### Time to Eat

Forget the hassle of food shopping, cooking and washing up! With breakfast and dinner covered, you can focus on making the most of your time at university.







## EXCELLENCE IN TEACHING WELCOME TO A DIFFERENT WAY OF LEARNING

Stranmillis is a catalyst for learning, fostering an environment where innovation meets impact. We are committed to providing a high-quality learning experience that encourages intellectual curiosity and best practices in teaching, learning, and student support. Our high rankings in the National Student Survey reflect the exceptional quality of education at the College.



### Learn from Experts

In college, you'll be taught by a team of passionate educators whose research, scholarship and teaching are making an impact globally. Expect to be challenged, to think critically, and to be inspired.

### Spaces to Learn

From quiet study zones to collaborative group spaces, you have access to a variety of learning environments and learning tools to help you excel in your studies.

### Advanced Tools and Technologies

Our virtual learning environment and interactive, student focused systems provide you with all the information you need for your studies – from lecture notes to video lessons, assignment details to communication with your lecturers.



### Learn Differently, Learn Better

Stranmillis offers a unique learning experience that's more than just lectures. From hands-on placements to innovative teaching methods, we'll help you develop the skills you need to succeed.

### Library Facilities

Our highly praised library offers an extensive collection of books, journals, and periodicals, along with personalised support for your academic projects and dissertations.







## SHAPING YOUR FUTURE PREPARED TO SUCCEED



At Stranmillis, we are committed to ensuring that you graduate with the skills and experiences that employers value most. That focus on employability means you'll develop a range of transferable skills through your academic studies, professional placements, and dedicated career-enhancing activities.

According to the UK Government's Graduate Outcomes survey, education-related degrees consistently rank among the highest for full-time employment rates across all disciplines. For Stranmillis graduates, this success is even more pronounced, with an unemployment rate of just 0.6% for our graduates 18 months after completing their studies.



### Professional Placements

A cornerstone of all our degrees is our comprehensive programme of professional placements. These hands-on experiences immerse you in a variety of relevant workplace settings, enabling you to apply your academic knowledge in real-world environments. Whether working in schools, early childhood settings, educational organisations, or related industries, you'll gain invaluable practical skills and confidence to hit the ground running upon graduation.

### Degree Enhancement

At Stranmillis, our Degree Enhancement programme is designed to help you stand out from the crowd. This initiative provides optional opportunities to build your skills and experience through short courses, specialised awards, community volunteering, and leadership roles within the College. Each activity is tailored to enhance your career readiness and ensure your CV showcases the qualities that employers are looking for.

### Careers Support

Our Careers Service is here to support you throughout your degree and for two years after graduation. From personalised career advice to organising careers fairs and networking events with potential employers, our Careers Team is on hand to ensure you have the resources and connections to succeed.

### A Global Passport

Education is a global force, impacting individuals in every corner of the world—not just in formal education, but through lifelong learning, community development, and professional training. A degree from Stranmillis equips you to make a global impact, opening up career opportunities far beyond traditional classroom roles. Wherever your career aspirations lie, a Stranmillis degree will position you as a leader in the education sector, ready to make a meaningful difference worldwide.







## GO GLOBAL EXPLORE THE WORLD

At Stranmillis we believe in the transformative power of global education and partnership. Our broad programme of international opportunities offer students enriching experiences that enhance their personal, professional, and academic growth. Every student has the opportunity to enjoy an international experience to help broaden their horizons, immerse themselves in diverse cultures, gain fresh perspectives on global education, serve others and enrich their learning experience and, at the same time, boost their employability.



### Turing Exchange Programme

Stranmillis has established a strong network of European university partners and, through the Turing Scheme, a UK government initiative that funds international education opportunities, every student has the opportunity to spend a semester studying and undertaking a professional placement at one of our 30 partner universities across Europe and beyond.

### Serving Others

The College has developed strong ties with education-related charities working in schools and communities in some of the most disadvantaged regions of the world. Partnering with organisations like Fields of Life and Saphara, students have the opportunity to participate in international volunteering projects, with student teams supporting projects and initiatives in Uganda and India.

### International Exchange Opportunities

Our international study programmes extend beyond Europe. From year-long scholarship programmes such as Study USA to shorter exchange initiatives in Europe, Thailand, Ireland and USA, as well as other international opportunities in China, India and Uganda, our International Team ensures a wide variety of global learning opportunities.

### A Global Campus

Stranmillis is more than just a college - it's a globally connected community. Our vibrant international programme welcomes students from around the world to our campus, creating a rich environment where everyone learns from and with one another.







## SUPPORTING YOU STUDENTS AT THE CENTRE



**Our students are at the centre of everything we do. We not only want them to achieve their full potential, but we also want them to enjoy their university experience. Our comprehensive student support services are designed to help you thrive, succeed and grow, academically, personally and professionally.**

### Your Wellbeing Matters

Our Student Support and Wellbeing team offers everything from counselling services to stress-relief events. We're committed to creating a nurturing environment where you can succeed and enjoy your time at university.

### Communication Skills Centre

Assignments and assessment can seem quite daunting. Our Communication Skills Centre provides individual and group support to help you develop your academic writing and communication skills.

### Disability Support

We are committed to inclusivity, offering comprehensive disability support services to ensure every student can fully engage in university life.

### Chaplaincy

Our chaplains offer pastoral support to students of all faiths and beliefs, fostering a community of mutual understanding and respect.

### Personalised Support

Every student has their own unique needs, which is why our commitment to supporting you is personal. Your Personal Tutor and Peer Mentor (a current student on a similar degree) are here to help you navigate university life. Whether you need academic advice or just someone to talk to, you've got a support network that's committed to your success.

### Student Satisfaction

Don't take our word for it. In the National Student Survey, Stranmillis consistently receives high rankings, reflecting not just the quality and excellence of the teaching but our commitment to student satisfaction and support.

### Widening Access to Higher Education

Diversity and inclusivity lie at the heart of our commitment to widening access to higher education, regardless of background or circumstance. Our widening access initiatives aim to remove barriers and support individuals in achieving their educational aspirations.







## STUDENT VOICES WHAT OUR STUDENTS HAVE TO SAY?

**Ellie Price**  
*BEd Primary*

**What is the most enjoyable thing about your course?**

I love the practical element of the course. A lot of it is very hands-on, giving you the opportunity to put the theory into practice.

**What have you enjoyed the most about being a Stranmillis student?**

The many events that the Students' Union have held, especially going to see Stran Does Strictly!

**What is the best thing about being a 'Stran' student?**

The atmosphere of the campus is very friendly. It often feels like a large family. Getting to meet so many different people and making wonderful friends.



**Erin McFarland**  
*BSc PES*

**What is the most enjoyable thing about your course?**

I really enjoy the practical element of my course and the range of various topics that we study.

**What have you enjoyed the most about being a Stranmillis student?**

The friendly atmosphere everywhere I go on campus is really uplifting. I have been able to get to know my classmates and tutors quite quickly, as well as find my way around campus.

**Tell us about life in Halls:**

It's quite daunting being away from your family but living in Halls definitely takes away the stress of travelling to and from uni throughout the day and making sure you're on time for class!

**Eva Gracey**  
*BEd Post-primary*

**Tell us about life in Halls:**

As a first year, living in Halls has really added to my University experience. I have formed great friendships and there is always time for a good laugh. Living on campus means I can avail of the opportunities that happen later in the evening.

**How would you describe the campus?**

It is like a big family where everyone knows each other or can get to know each other. Stranmillis campus is a hidden gem with its greenery, wildlife and calm outside spaces.

**What have you enjoyed the most about being a Stranmillis student?**

I have enjoyed the ethos that the College has. Everyone knows everyone and friendships can be formed through the wide range of activities and societies on campus.



**Lewis Kennedy**  
*BSc PES*

**Tell us about life on campus:**

Everyone is really easy to get on with. At the table tennis table in Central Building the competition is high and it's good fun between lectures.

**What 3 words describe Stranmillis?**

Camaraderie | Teamwork | Welcoming







## STUDENT VOICES WHAT OUR STUDENTS HAVE TO SAY?

**Nicola Donald**  
*BEd Post-primary*

### Tell us about your school or work-based placements:

Placement is amazing. It really gives you a clear idea of what teaching in a school will be like and it gives you a chance to get to know the children in your class before you start to teach them later on in the year.

### Tell us about the activities you have been involved with:

I have been involved in lots of activities, such as the country social night, TNL (Tuesday Night Live), Stran Take Me Out and the Back to School Bop!

### How helpful and supportive are your tutors?

Tutors are very supportive, especially with the big change between A-level work and university work. The tutors are very approachable and will help you with whatever you need and you can arrange to meet with them after class to discuss any challenges.

**Ciara Herity**  
*BA ECS*

### How well supported do you feel?

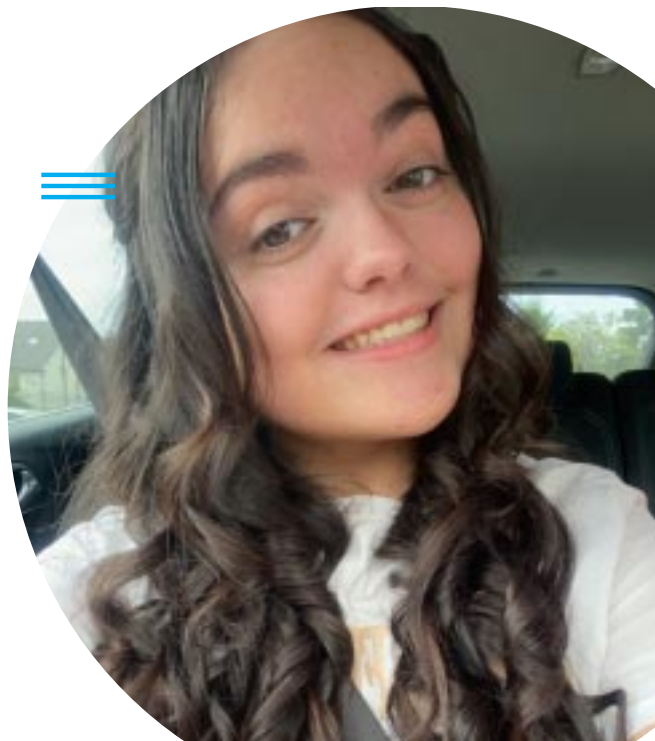
The staff are helpful and always ready to answer questions or point you in the right direction. Even the security team on campus are very helpful. The SU team are warm and welcoming and an amazing support network for both academic and personal issues.

### How would you describe the campus?

Campus is really lively! There are trees and green areas with picnic benches where you can sit and chill with your friends.

### What 3 words describe Stranmillis?

Supportive | Inclusive | Community!



## Three words that describe Stranmillis University College



**Sophia Meldrum**  
*BEd Primary*

### Tell us about your school or work-based placement.

School based work is really enjoyable and the best way to learn. It's great being able to build relationships with the pupils in my class.

### How helpful and supportive are your tutors?

My tutors are always there to offer me advice and give me support when I need it.







## RESEARCH EXCELLENCE A COMMITMENT TO BEST AND NEXT PRACTICE



The significance and impact of research on your university degree cannot be overstated. Education is a transformative journey that affects everyone, and our commitment to research and scholarship underscores our pivotal role in shaping not only policies and practices but also the very essence of academic learning.

The immediate impact of our research is palpable in our teaching methods—what we teach, where we teach and how we teach – and is the cornerstone your academic success. Our focus on critical areas such as Educational Underachievement, Playful Learning, Early Years Education, Special Educational Needs, Pupil Wellbeing, and

Pastoral Care ensures that your degree is not just a certificate but a testament to a well-rounded education that addresses real-world challenges.

That dedication to impact-driven research ensures that your degree transcends traditional boundaries, equipping you with the knowledge and skills needed to thrive in an ever-evolving global landscape. Our reputation, influence, and impact as a leader in educational policy and practice extends far beyond the gates of the College, transforming the lives of children, young people, and communities globally. As a Stranmillis student, you are part of that transformative community.

## EXPLORE OUR COURSES



Stranmillis University College offers the following full-time and part-time undergraduate and foundation degree courses:

### EARLY CHILDHOOD STUDIES

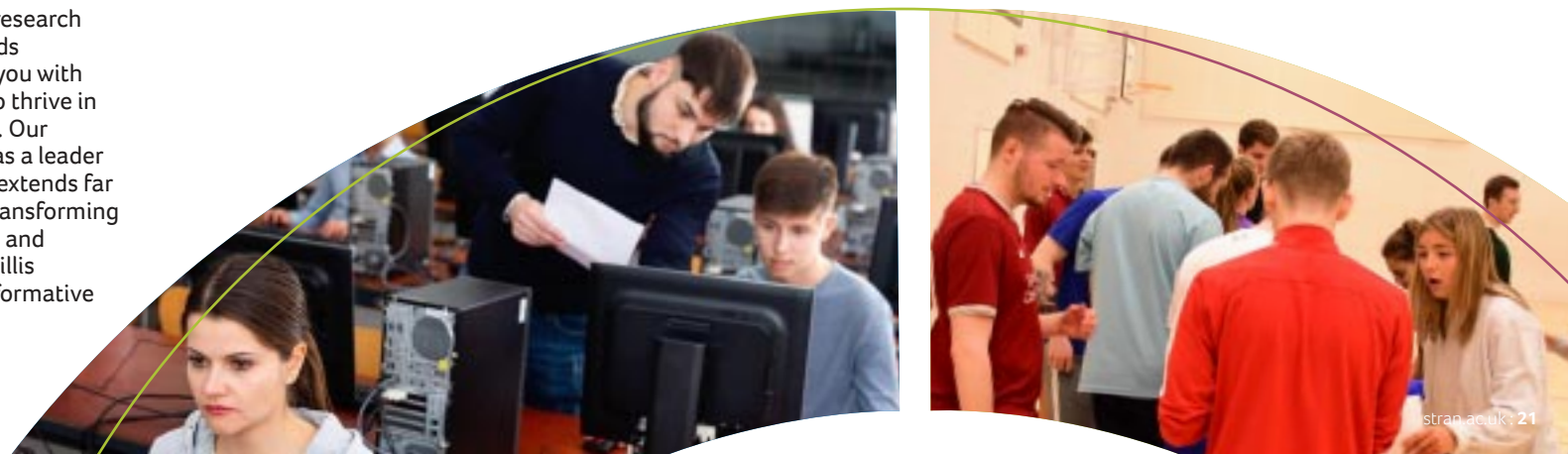
- P26 BA (Hons) Early Childhood Studies (Full-time)
- P28 BA (Hons) Early Childhood Studies (Part-time)
- P30 Foundation Degree Early Childhood Studies

### INITIAL TEACHER EDUCATION

- P34 BEd (Hons) Post-primary, Business and Enterprise
- P36 BEd (Hons) Post-primary, Mathematics
- P38 BEd (Hons) Post-primary, Religious Studies
- P40 BEd (Hons) Post-primary, Technology and Design
- P42 BEd (Hons) Post-primary SUBSIDIARY SUBJECTS
- P46 BEd (Hons) Primary

### PHYSICAL EDUCATION AND SPORT

- P50 BSc (Hons) Physical Education and Sport
- P52 Foundation Degree Physical Education and Sport





# UNDERGRADUATE ENTRANCE REQUIREMENTS 2026

Programme	UCAS Code	A-Level Requirements	Subject Requirements	GCSE Requirements
BEd (Hons) Primary	X120	AAB	No subject requirement	English, Mathematics and Science grade C
BEd (Hons) Post-primary Business and Enterprise	N1X3	BBC	At least one from Business Studies, Economics or Accounting	English and Mathematics grade C
BEd (Hons) Post-primary Mathematics	XG10	BCC	Mathematics	English and Mathematics grade C
BEd (Hons) Post-primary Religious Studies	XVC6	ABB	Religious Studies	English and Mathematics grade C
BEd (Hons) Post-primary Technology and Design	XW12	BCC	At least one from Technology and Design, Computing or Physics	English and Mathematics grade C
BA (Hons) Early Childhood Studies	X310	BBB	No subject requirement	English and Mathematics grade C
Foundation Degree Early Childhood Studies	LX53	CC	No subject requirement	English and Mathematics grade C
BSc (Hons) Physical Education and Sport	LL34	BCC	At least one from Sports Studies, Physical Education, Biology, Leisure Studies, Home Economics or Health and Social Care	English, Mathematics and Science grade C
Foundation Degree Physical Education and Sport	52L7	CC	At least one from Sports Studies, Physical Education, Biology, Leisure Studies, Home Economics or Health and Social Care	English and Mathematics grade C

Programme	Access Course Requirements	Irish Leaving Certificate Requirements
BEd (Hons) Primary	70% Average in Level 3 modules.	H2 H3 H3 H3 H3 H3. Minimum O4 required in Maths, English and a Science.
BEd (Hons) Post-primary Business and Enterprise	65% Average in Level 3 modules, to include 65% in a Business related module.	H3 H3 H3 H3 H4 to include Business, Economics or Accounting. Minimum O4 required in Maths and English.
BEd (Hons) Post-primary Mathematics	65% Average in Level 3 modules in a Mathematics based Access course.	H3 H3 H3 H3 H4 to include Mathematics. Minimum O4 required in English.
BEd (Hons) Post-primary Religious Studies	65% Average in Level 3 modules to include at least one Humanities related module.	H2 H3 H3 H3 H3 to include Religious Studies. Minimum O4 required in Maths and English.
BEd (Hons) Post-primary Technology and Design	65% Average in Level 3 modules in a Technology, Engineering or Computing Access course.	H3 H3 H3 H3 H4 to include either Technology and Design, Computing or Physics. Minimum O4 required in Maths and English.
BA (Hons) Early Childhood Studies	65% Average in Level 3 modules.	H3 H3 H3 H3 H4 H4. Minimum O4 required in Maths and English.
Foundation Degree Early Childhood Studies	55% Average in Level 3 modules.	H5 H5 H5 H5 H5. Minimum O4 required in Maths and English.
BSc (Hons) Physical Education and Sport	65% Average in Level 3 modules in Access course containing Sport/Health/Biology related modules.	H3 H3 H3 H4 H4 to include Biology. Minimum O4 required in Maths and English.
Foundation Degree Physical Education and Sport	55% Average in Level 3 modules in Access course containing Sport/Health/Biology related modules.	H5 H5 H5 H5 to include Biology. Minimum O4 required in Maths and English.

\*Applicants studying National Extended Certificate/OCR Cambridge Technical Introductory Diploma/ Extended Certificate Level 3 in lieu of A Levels should note the below equivalencies. Please note that the below is stated in terms of an overall grade.

A Level Grade	OCR Cambridge Technical Introductory Diploma/Extended Certificate - Level 3/ BTEC (RQF) National Extended Certificate -Level 3 Equivalent
A	Distinction*
B	Distinction
C	Merit



# EARLY CHILDHOOD STUDIES

If you're passionate about making a positive impact on young children's lives, our Early Childhood Studies programme is the perfect choice. This course is built around the idea of Educare—an approach that blends both education and care. It gives you a deep understanding of how young children think, learn, and grow, preparing you for a career that focuses on supporting early development. The course also encourages a collaborative, multi-professional approach, essential for modern early years education.



## EARLY CHILDHOOD STUDIES

This programme is your chance to shape the future of young children while building a rewarding career for yourself. Get ready to unlock your potential and make a difference in the lives of children every day!

### Pathways Available

- BA (Hons) Early Childhood Studies (Full-time)
- BA (Hons) Early Childhood Studies (Part-time)
- Foundation Degree Early Childhood Studies (Full-time and Part-time)

### Teaching and Learning

Your teaching and learning combines lectures, tutorials and group projects with an extensive and varied placements programme where you'll gain hands-on practice working with children. In College, and on placement, you will be taught, assessed and supported by an experienced team of early childhood professionals, who will ensure you receive industry-focused learning. Considering this focus on the development of practice-based skills, all students are required to gain clearance under AccessNI protocols and/or Trust clearance procedures, during their first year of study and, subsequently, during their third year of study.

### Professional Practice

A core part of your course will be working directly with children aged 0 to 8, with placements in various settings such as nurseries, Foundation Stage classrooms, and Key Stage 1. This practical experience is designed to support your teaching and learning and build the skills you'll need to thrive in early childhood environments.

### How Will I Be Assessed?

We use a variety of assessment methods to evaluate your progress, including essays, group projects, presentations, and a final dissertation. You'll also be assessed during your placement, ensuring that your practical skills are as strong as your academic knowledge.



### Career Opportunities

The Early Childhood Studies programme has been developed alongside industry experts to meet the needs of employers in early years education and care. After graduating, you'll be work-ready and prepared for a wide range of roles, including jobs in nurseries, early years organisations, primary schools, crèches, and family centres.



# BA (HONS) EARLY CHILDHOOD STUDIES (FULL-TIME)



## BA (HONS) EARLY CHILDHOOD STUDIES (FULL-TIME)

The full-time Early Childhood Studies programme covers three core themes - Understanding the Child, The Child in the Learning Context and The Child in the Family and Community. The course takes account of the latest developments within the field of early childhood and reflects the multi-professional and multi-disciplinary nature of contemporary early childhood services.

### The Early Childhood Studies programme explores three key themes:

1. Understanding the Child
2. The Child in the Learning Context
3. The Child in the Family and Community.

Designed to reflect the latest research and developments in early childhood education, the course emphasises the multi-professional, interdisciplinary approach required in contemporary early years services.

### What You'll Study

Some of the key areas you'll cover include:

- Children's Learning Intentions
- Social and Developmental Learning
- Childhood in Society
- Children's Health and Wellbeing
- Partnership with Children and Families
- Children in the Early Years Environment
- Management, Leadership and Professionalism
- Early Years Curriculum (Ages 3-8)
- Curiosity and the Child

### Professional Practice

Professional practice is central to the degree, providing hands-on experience in different early childhood settings, consisting of a combination of weekly day visits and block placements. These placements allow you to develop your skills in real settings, ensuring you're work-ready when you graduate.

### Study Abroad

In Year 2, you can expand your experience by studying abroad, with placements at one of our international partner universities, adding a global perspective to your skills.

**A-level Requirements: BBB**

**Duration: 3 years**

**UCAS Code: X310**

For specific subject requirements and alternative qualifications see pages 22-23





# BA (HONS) EARLY CHILDHOOD STUDIES (PART-TIME)



## BA (HONS) EARLY CHILDHOOD STUDIES (PART-TIME)

If you're already working in early childhood education but want to further your qualifications, the part-time BA (Hons) is the ideal degree pathway. This 4-year course offers the same modules as the full-time degree but allows you to balance study with work and other commitments. The part-time programme is available at Stranmillis and at South West College (Omagh). Those who hold qualifications at Level V [QCF framework] or higher can also opt to study at Southern Regional College (Newry).

### What You'll Study

Some of the key areas you'll cover include:

- Children's Learning Intentions
- Social and Developmental Learning
- Childhood in Society
- Children's Health and Wellbeing
- Partnership with Children and Families
- Children in the Early Years Environment
- Management, Leadership, and Professionalism
- Early Years Curriculum (Ages 3-8)
- Curiosity and the Child

### Professional Practice

Professional practice is an essential part of the degree. Before starting, part-time students need to arrange their own professional placements in a structured early years setting, which could be through your current job or volunteer work, for at least 7–10 hours a week.

### Study Abroad

There's also the opportunity to study abroad during your course, enhancing your international understanding of early childhood education.

**A-level Requirements: BBB**

**Duration: 4 years**

**UCAS Code: Apply direct to SUC**

For specific subject requirements and alternative qualifications see pages 22-23



Shape  
Your  
Future



# FOUNDATION DEGREE EARLY CHILDHOOD STUDIES



## FOUNDATION DEGREE EARLY CHILDHOOD STUDIES

The Foundation Degree is designed to provide you with the specialist knowledge and understanding for working with young children aged between 0 and 8 years, focussing on the key theories, concepts and strategies for working with this age group in a variety of Early Years settings.

### Locations

You can choose to study full-time (2 years) or part-time (3 years) at various locations:

- Belfast Metropolitan College
- North West Regional College (Londonderry/Derry)
- Northern Regional College (Ballymena and Newtownabbey)
- South Eastern Regional College (Lisburn)
- South West College (Omagh)
- Southern Regional College (Newry)

### What You'll Study

Some topics you'll explore include:

- Child Development
- Acquisition of Language and Communication Skills
- Learning through Play
- Safeguarding Children
- Developing Skills and Strategies for Managing Children's Behaviour
- Working with Children with Additional Needs
- Anti-Discriminatory Practice and Inclusion in the Early Years Environment
- Working with Babies 0-3 Years

### Professional Practice

Practical work-based placements are a key part of this degree, allowing you to gain the hands-on experience you need to complement and support your classroom learning.

### Progression

If you meet the required academic standards, you'll have the option to progress into the second year of the BA (Hons) Early Childhood Studies programme.

**A-level Requirements: CC**

**Duration: 2 or 3 years**

**UCAS Code: LX53**

For specific subject requirements and alternative qualifications see pages 22-23





# INITIAL TEACHER EDUCATION

Have you the passion and desire to help children learn and grow? Do you want to make a real difference in their lives and help them reach their full potential? As a teacher, you'll be in a unique position to inspire and guide young people, shaping their futures both in and out of the classroom. At its core, teaching is about much more than delivering lessons—it's about motivating, engaging, and creating an environment where students can thrive academically, socially, and emotionally.

Our Initial Teacher Education (ITE) programmes go beyond preparing you for what and how to teach. They equip you with the skills, knowledge, and practical experience needed to inspire the next generation. Whether your passion lies in primary or post-primary education, our courses are designed to develop you into an effective, confident, and dynamic teacher.



## INITIAL TEACHER EDUCATION



### Pathways to Becoming a Teacher

We offer five distinct ITE pathway programmes:

1. BEd Primary Education
2. BEd Post-primary: Business and Enterprise
3. BEd Post-primary: Mathematics
4. BEd Post-primary: Religious Studies
5. BEd Post-primary: Technology and Design

### Professional Accreditation

All our teaching degrees are accredited by the General Teaching Council (Northern Ireland), which means that when you graduate, you'll achieve Qualified Teacher Status (QTS) and be eligible to teach in primary and secondary schools across Northern Ireland.

### Teaching and Learning

In addition to lectures, tutorials, workshops and individual or group projects, an integral and essential part of the teaching and learning process is delivered through hands-on, school-based work placements. During your time in both College and school placements, you'll be guided and supported by experienced educators who are passionate about teaching and learning. They'll help you connect theory to practice, giving you the practical skills needed for a successful teaching career.

### How Will I Be Assessed?

You'll be assessed in a variety of ways, including essays, group projects, presentations, e-portfolios, and exams. During your placements, your teaching practice will also be evaluated. In your final year, you'll complete a dissertation, where you'll explore a topic in education that really interests you.

### Study Abroad Opportunity

In Year 3, you'll have the chance to spend a semester abroad at one of our partner universities. This is a fantastic opportunity to gain international teaching experience and learn about education in a different cultural context.

### Your Future Career

Teaching is one of the most rewarding careers, and education graduates have some of the highest employment rates in Northern Ireland. While many of our graduates go on to become teachers, the skills you'll gain—like communication, leadership, and problem-solving—are also valued in other sectors such as youth services, community work and local government.

### School-Based Work

Each year, you will undertake 7–9 weeks of school-based placements across various educational settings, giving you practical hands-on teaching experience to complement and help you put into practice your classroom learning. In your final year, you'll also undertake a 2-week Insight Placement, where you can explore teaching and learning in alternative educational environments.





# BEd (HONS) POST-PRIMARY BUSINESS AND ENTERPRISE



## BEd (HONS) POST-PRIMARY BUSINESS AND ENTERPRISE

If you're interested in the world of business and want to share that knowledge with young people, this course is perfect for you. The **Business and Enterprise** pathway will prepare you to teach business-related subjects at Key Stage 4 and post-16 levels, while also helping you develop a deeper understanding of how businesses work. You will be exploring the latest trends, challenges, and developments in business practices and how local and national businesses thrive by adopting an entrepreneurial mindset.

### Education Studies

Education Studies helps you understand the theory and practice behind teaching, exploring the psychology, sociology, philosophy, historical and contemporary aspects of education. It also examines critical areas such as education research, special and additional educational needs, and how students learn in diverse classrooms.

### Main and Subsidiary Subject

Alongside your Education Studies, Professional Practice and Business and Enterprise modules, you will also study a subsidiary subject.

On the Business and Enterprise pathway, your main subject will include engaging modules such as:

- Financial Accounting
- General Business Decision Making
- Managing People
- Managing Projects
- Marketing
- Operations Management

Alongside your Education Studies and main subject, you will study a subsidiary subject from **Computer Science, English, Mathematics, Physical Education, Religious Studies** or **KS3 Science**.

For more information, please see pages 42-45.

**A-level Requirements: BBC**

**Duration: 4 years**

**UCAS Code: N1X3**

For specific subject requirements and alternative qualifications see pages 22-23





# BEd (HONS) POST-PRIMARY MATHEMATICS



## BEd (HONS) POST-PRIMARY MATHEMATICS

On the Mathematics pathway, you will learn how to harness your skills in the subject in order to share your knowledge, passion, and enthusiasm with fellow professionals, and learners within your own classrooms. Logical thinking, problem solving, and an in-depth knowledge of Mathematics as a discipline are developed across the modules, both in terms of your own subject knowledge, and the application of this knowledge to the teaching profession.

### Education Studies

Education Studies helps you understand the theory and practice behind teaching, exploring the psychology, sociology, philosophy, historical, and contemporary aspects of education. It also examines critical areas such as education research, special and additional educational needs and how students learn in diverse classrooms.

### Main and Subsidiary Subject

Typical subject specific modules studied on the Mathematics pathway include:

- Linear Algebra
- Calculus
- Complex Numbers
- Mechanics
- Statistics and Probability Theory
- The Theory of Sets
- The Theory of Numbers
- Advanced Geometry
- History and Philosophy of Mathematics (Project)

Alongside your Education Studies and main subject, you will study a subsidiary subject from **Computer Science, English, Physical Education, Religious Studies** or **KS3 Science**. For more information, please see pages 42-45.

**A-level Requirements: BBC**

**Duration: 4 years**

**UCAS Code: XG10**

For specific subject requirements and alternative qualifications see pages 22-23





# BEd (HONS) POST-PRIMARY RELIGIOUS STUDIES



## BEd (HONS) POST-PRIMARY RELIGIOUS STUDIES

Exploring some of life's big questions the course covers everything from Biblical studies to philosophy and ethics, preparing you to teach Religious Education at post-primary level. With an emphasis on inclusion, diversity and critical openness, you will develop a deepening personal awareness and understanding of religion and religious issues. Students on the course come from a range of religious backgrounds or of no religion.

### Education Studies

Education Studies helps you understand the theory and practice behind teaching, exploring the psychology, sociology, philosophy, historical, and contemporary aspects of education. It also examines critical areas such as education research, special and additional educational needs and how students learn in diverse classrooms.

### Main and Subsidiary Subject

Typical subject specific modules studied on the Religious Studies pathway include:

- Biblical Studies
- Early Church History
- Eastern Religions
- Philosophy of Religion and Ethics
- Theology

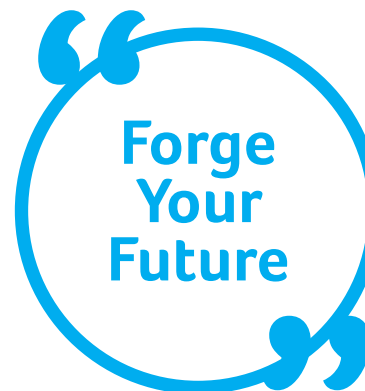
Alongside your Education Studies and main subject, you will study a subsidiary subject from **Computer Science, English, Mathematics, Physical Education** or **KS3 Science**. For more information, please see pages 42-45.

**A-level Requirements: ABB**

**Duration: 4 years**

**UCAS Code: XVC6**

For specific subject requirements and alternative qualifications see pages 22-23





# BEd (HONS) POST-PRIMARY TECHNOLOGY AND DESIGN



## BEd (HONS) POST-PRIMARY TECHNOLOGY AND DESIGN

Do you want to inspire students to think creatively and use cutting-edge technology? The Technology and Design course will prepare you to teach dynamic subjects like manufacturing, systems design and CAD/CAM and the integration and implications of new technology. You will have access to the latest design tools and manufacturing technologies such as laser cutters, drones, robotics and 3D printers.

### Education Studies

Education Studies helps you understand the theory and practice behind teaching, exploring the psychology, sociology, philosophy, historical, and contemporary aspects of education. It also examines critical areas such as education research, special and additional educational needs and how students learn in diverse classrooms.

**A-level Requirements: BCC**

**Duration: 4 years**

**UCAS Code: XW12**

For specific subject requirements and alternative qualifications see pages 22-23

### Main and Subsidiary Subject

Typical subject specific modules studied on the Technology and Design pathway include:

- Advanced Manufacturing, Materials and Processes
- Computer Aided Design and Manufacture
- Manufacturing, Materials and Processes
- Product Analysis, Design and Manufacture
- Systems
- Systems Design: Mechatronics

Alongside your Education Studies and main subject, you will study a subsidiary subject from **Computer Science, English, Mathematics, Physical Education, Religious Studies, or KS3 Science**. For more information, please see pages 42-45.



“  
**Build  
Your Path  
to Success**  
”





# POST-PRIMARY SUBSIDIARY SUBJECTS

Computer Science

KS3 Science

Physical Education

English

Mathematics

Religious Studies

Our BEd (Hons) Post-primary programme is highly flexible, giving you a broad choice of subject combinations, allowing you to make the most of your academic strengths and interests. In addition to choosing one of the four main subject areas, you will also choose a subsidiary subject, which you can normally teach to Key Stage 3 or GCSE level.



# BEd (HONS) POST-PRIMARY SUBSIDIARY SUBJECTS

In addition to your main subject areas, you will also choose and study a subsidiary subject, which you can normally teach to Key Stage 3 or GCSE level.

## Computer Science

To meet the growing demand in the IT sector, we aim to train teachers to inspire and engage students of all ages and abilities. Learn how to teach coding and IT skills to young learners. Computing is becoming increasingly important in education, with students engaging in coding and algorithmic thinking from as early as 8 years old. This early exposure helps foster natural development in problem-solving, creativity, and confidence, empowering children to become creators rather than passive users of technology. If you're passionate about IT and eager to learn new skills, choosing Computer Science as a subsidiary subject can open up a world of exciting opportunities.

## English

English is a key component of the Northern Ireland Curriculum, and students often choose it as a subsidiary subject to enhance their career prospects. The subject comprises two main areas: English Literature, where students explore poetry, prose, and drama, including practical drama teaching up to KS4; and the application of English, focusing on the pedagogy of teaching both English Language and Literature. As part of the course, you will also participate in Fighting Words workshops to refine your writing skills, and deliver reading workshops to visiting school pupils.







### **KS3 Science**

The Science subsidiary programme prepares students to teach all three sciences to Key Stage 3 (Year 10), significantly boosting their employability as graduate teachers. The programme deepens subject knowledge and fosters a passion for scientific discovery and enquiry. Through seminars and hands-on activities, students develop practical skills and learn to plan and manage junior science lab work. The teaching approach incorporates the latest theories in science education, with student co-teaching and advanced video technology to prepare students for their future careers in education.



### **Mathematics**

Many students opt to take subsidiary mathematics as their second subject. If you have a strong interest in mathematics from GCSE and A-level studies, this course allows you to develop your skills for teaching maths. Schools often seek teachers who can teach maths at KS3 and KS4 alongside their main subject, and this option prepares you for that role. The course deepens your understanding of mathematical concepts while also building your confidence in teaching mathematics. This combination enhances your employability in an increasingly competitive job market.



### **Physical Education**

The programme covers theoretical topics such as child development, PE philosophy, curriculum studies, motor skill learning, and diversity and inclusion. Practical areas focus on building the skills and confidence to teach various activities, including games, athletics, health-related physical activities, swimming, gymnastics, and dance. While no formal qualifications are required, a strong interest in PE is essential. Students choosing this subsidiary subject are required to teach PE during their annual block placement.



### **Religious Studies**

This subject prepares students to teach Religious Studies and Religious Education up to GCSE level, while exploring profound questions and moral dilemmas in today's complex world, such as "What does it mean to be human?" and "Why is there pain and suffering?" In Years 1 and 2, students complete introductory courses in Biblical Studies, covering the origins and beliefs of Christianity and Judaism, biblical theology, and the life of Jesus as described in the Gospels. In Year 3, students study Philosophy and Christian Ethics, deepening their understanding of religious thought and moral reasoning.



# BEd (HONS) PRIMARY



## BEd (HONS) PRIMARY

On the BEd (Hons) Primary degree programme, Education Studies, Curriculum Studies, and Professional Practice provide the foundation for what you will be studying, providing an overview of education theory, policy, and practice. You will also choose a specific area of specialism to study in more depth.

### Education Studies

Education Studies helps you understand the theory and practice behind teaching, exploring the psychology, sociology, philosophy, historical, and contemporary aspects of education. It also examines critical areas such as education research, special and additional educational needs and how students learn in diverse classrooms.

**A-level Requirements: AAB**

**Duration: 4 years**

**UCAS Code: X120**

For specific subject requirements and alternative qualifications see pages 22-23

### Curriculum Studies

Curriculum Studies provides the necessary knowledge and understanding of all areas of the Northern Ireland Curriculum, helping to develop your intellectual, practical and transferable skills. Typical modules include The Arts, Language and Literacy, STEM subjects, Physical Education, Religious Education, Personal Development and Mutual Understanding, and The World Around Us.

### Area of Specialism

Alongside your Curriculum Studies, in Years 1-3, you will also study, in more depth, one of the specialist areas of learning within the curriculum. The Area of specialism options are: Art and Design; Drama; English and Literacy; Geography and History; Maths and Numeracy; Music; Physical Education; Religious Education; or Science and Technology.

### School-Based Work Placements

Each year, you will undertake 7-9 weeks of school-based placements across various educational settings (Foundation, Key Stage 1 and Key Stage 2), giving you practical hands-on teaching experience to complement and help you put into practice your classroom learning. In your final year, you'll also undertake a 2-week Insight Placement, where you can explore teaching and learning in alternative educational environments.





# PHYSICAL EDUCATION AND SPORT

The **Physical Education and Sport** programme is the perfect gateway to a career in the field of sport and health, enabling children and young people to live more active and healthier lifestyles. Physical activity rates and health promotion are vital to the social and economic wellbeing of society. This dynamic, multidisciplinary degree focuses on improving physical activity, promoting active lifestyles, and enhancing community health - key elements for a thriving society. Through the programme, you'll engage in a variety of practical activities while exploring the essential theories behind physical education, health, nutrition, and sport.



# PHYSICAL EDUCATION AND SPORT

## Pathways

There are two pathways on the Physical Education and Sport programme:

1. BSc (Hons) Physical Education and Sport
2. Foundation Degree Physical Education and Sport

## Teaching and Learning

Your learning experience will be diverse and interactive - a blend of theory and practice preparing you for real-world challenges in the field.

- Lectures and tutorials
- Workshops and practical sessions
- Group projects and individual assignments
- Relevant professional work placements

You'll learn from a team of experienced educators who are leaders in their fields. Our faculty includes internationally recognised academics dedicated to supporting your academic journey and professional development.

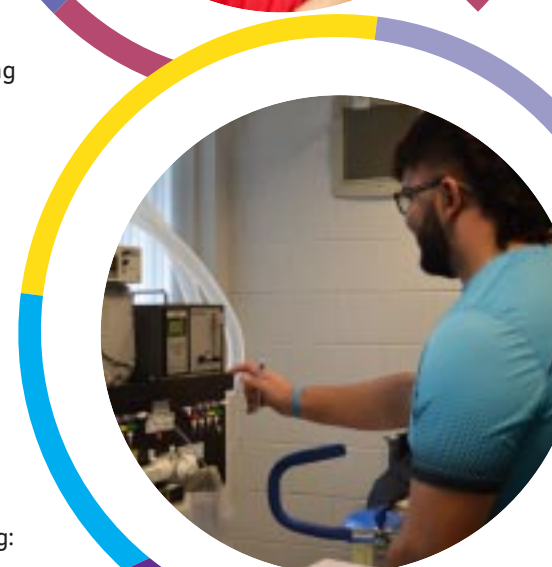
## How Will I Be Assessed?

A variety of assessment methods are used, including: critically reflective essays; individual and group projects and presentations; written examinations; assessment on placement; webinars, podcasts and E-newsletter to demonstrate digital literacy skills; and a final dissertation. This diverse approach not only tests your knowledge but also helps you develop critical skills for your future career.

## Career Prospects

Graduating from this programme opens doors to many exciting career paths, such as:

- Becoming a primary or secondary PE teacher (with a PGCE qualification)
- Sports coaching or development
- Health promotion and community sports development
- Working in educational or youth services





# BSc (HONS) PHYSICAL EDUCATION AND SPORT



## BSc (HONS) PHYSICAL EDUCATION AND SPORT

The **BSc (Hons) Physical Education and Sport** degree is an innovative, multidisciplinary course designed to boost your skills and expertise for a career in health promotion, education, or various roles in sport. You will cover essential topics such as health promotion, the psychology of physical activity, exercise physiology, nutrition, and sports development.

### What you will study?

Examples of the type of modules studied on the course include:

- Sport and Exercise Psychology
- Practical studies in PE and Sport
- Exercise Science
- Sociology of Health and Sport
- Body Systems
- Contemporary Issues in Health
- Sports Nutrition
- Sport in the Community
- Health Promotion and Professional Practice.

### Professional Practice

Hands-on learning is key! You'll gain valuable experience through relevant professional placements that complement your academic studies.

### Study Abroad

In your second year, you'll have the chance to study and complete professional practice at one of our international partner universities, broadening your horizons and enhancing your educational experience.

**A-level Requirements: BCC**

**Duration: 3 years**

**UCAS Code: LL34**

For specific subject requirements and alternative qualifications see pages 22-23





# FOUNDATION DEGREE PHYSICAL EDUCATION AND SPORT



## FOUNDATION DEGREE PHYSICAL EDUCATION AND SPORT

The **Foundation Degree** pathway is a two-year, full-time course focused on practical and theoretical aspects of physical education, delivered at Belfast Metropolitan College. You'll complete 12 compulsory modules, including a Research Project, and engage in hands-on learning through work placements and volunteering at live sporting events.

### What you will study?

Examples of the type of modules studied on the course include:

- Practical Studies
- Physical Activity, Lifestyle and Wellbeing
- Physical Activity and Sport for Specific Groups
- Introduction to Management in Health, Physical Activity and Sport
- Fitness Testing and Training
- Introduction to Health, Sport and Exercise Psychology
- Anatomy and Physiology for Sport and Health
- Applied Health, Sport and Exercise Psychology
- Event Management

### Professional Practice

A programme of relevant professional placements complement and support your classroom learning.

### Progression

Graduates who achieve the desired academic standard may be eligible for progression to Year 2 of the BSc (Hons) Physical Education and Sport at Stranmillis University College or Year 2 of the BA (Hons) Liberal Arts Physical Education at St Mary's University College Belfast.

**A-level Requirements: CC**

**Duration: 2 years**

**UCAS Code: 52L7**

For specific subject requirements and alternative qualifications see pages 22-23



“  
Unlock  
Your  
Potential  
”





## APPLICATIONS AND ADMISSIONS

### HOW TO APPLY

Applications for full-time undergraduate courses are made via UCAS, while applications for part-time BA Early Childhood Studies and the PGCE Early Years are made directly to Stranmillis University College.

### APPLICATION DEADLINES

- UCAS applications for 2025 entry open in September 2024 and close on 29 January 2025.
- Part-time BA Early Childhood Studies applications close on 01 March 2025.
- PGCE Early Years applications close on 01 February 2025.

**Institution code name:** SUCB  
**Institution code:** S79



### GENERAL ENTRANCE REQUIREMENTS

Applicants must meet the general entrance requirements of Queen's University Belfast. Specific A-level requirements for each course are listed on relevant course pages. For PGCE Early Years, applicants need a minimum upper second-class honours degree in early years.

### ENHANCED ACCESSNI CHECK

All undergraduate and PGCE applicants must undergo an enhanced AccessNI check, which is administered by the University College.

### DEFERRED ENTRY

Deferred entry is not accepted at Stranmillis University College.

### MATURE STUDENTS

We welcome mature students who have been out of education and may hold qualifications such as Access courses, A-levels, Diplomas, Foundation Degrees, or Open University credits.

### DISABILITY, MEDICAL CONDITION OR SPECIAL NEED

Stranmillis University College encourages applications from students with disabilities. We offer tailored support to ensure individual needs are met. Disclosure of disabilities will be treated confidentially and will not affect your application.

### MEDICAL FITNESS

All candidates must complete a health declaration before starting their course. Based on this, our medical officer may classify a student as fit or request further information.

### ACCURACY AND CHANGES TO PROGRAMMES

The University College regularly evaluates and updates its courses. Changes may be necessary to meet accreditation or research requirements, or due to circumstances beyond the University College's control. You will be notified of any changes after accepting your offer, with alternatives provided to minimise disruption.

### TERMS AND CONDITIONS

When accepting an offer, you enter into a contract with the University College. You will have a 14-day cooling-off period after accepting the offer. Be sure to review the terms and conditions carefully before accepting.

### ADMISSIONS PROCESS

#### BEd AND BA (FULL-TIME) PROGRAMMES

Applications are reviewed based on academic qualifications, personal statements, and references. All applicants must have a minimum grade C in GCSE English and Mathematics.

#### PERSONAL STATEMENT REVIEW

Applicants must demonstrate a clear motivation for teaching (BEd) or working with young children (BA) in their personal statement. Experience working with children in a structured environment is essential.

#### INTERVIEW AND PRESENTATION

Shortlisted candidates will be invited to an interview and presentation. Interview dates will be communicated in advance, and applicants will be assessed on both their presentation and interview responses.

#### OFFERS

Offers are made based on interview scores and verification of qualifications. Final decisions will be communicated through UCAS.

#### BA (HONS) EARLY CHILDHOOD STUDIES (PART-TIME)

For part-time applicants, the interview process includes a group discussion. Applicants must also secure a work placement involving children aged 0-8.

#### BSc (HONS) PHYSICAL EDUCATION AND SPORT

No interview is required for this programme. Conditional offers are made based on academic profile, including GCSE and AS-level performance.

#### CONFIRMATION AND CLEARING

Following results in August, applicants who meet or exceed their offer conditions will be accepted. Those who slightly miss their offer conditions may still be considered, depending on interview scores and academic profiles.

For more information, please visit our [Admissions page](#) or contact Academic Registry. [Registry@stran.ac.uk](mailto:Registry@stran.ac.uk)





## FEES AND FINANCE

Student tuition fees payable are dependent on the 'residency' status of each student and are normally subject to an annual inflationary increase.

### FULL TIME TUITION FEES

Residency	2025-26
NI and ROI	£4,855
GB	£9,535
EU (excluding ROI)	International fees apply



### PART TIME TUITION FEES

For up-to date part-time undergraduate tuition fees refer to:

[www.stran.ac.uk/courses/fees-and-finance/](http://www.stran.ac.uk/courses/fees-and-finance/)

### PAYMENT OPTIONS

- ▶ Tuition Fee Loan via Student Loans Company (Contact your local Student Finance Authority for further Information)
- ▶ Pay in full
- ▶ Direct Debit instalment plan
- ▶ Sponsor

## Bursaries and Financial Support for Students

The University College offers a range of bursaries and financial support to assist students who meet certain eligibility criteria:

- ▶ Financial Bursary
- ▶ Halls Accommodation Bursary
- ▶ Care Experience Student - Study Support Bursary
- ▶ Student Support Fund

Northern Ireland has the lowest student living costs in the UK

National Student Money Survey (2024)

### OTHER SOURCES OF FINANCIAL SUPPORT

Student Finance NI (or GB equivalent) can assist with a range of further financial support dependent on the applicant's personal circumstances including:

- ▶ Maintenance Loans / Grants
- ▶ Fee / Course Grants (Part Time Study only)

We encourage all students to contact Student Finance NI (or GB equivalent) as early in the application process as possible.

Visit [www.studentfinanceeni.co.uk](http://www.studentfinanceeni.co.uk) for further information.

We're here to answer your questions:

E: [studentfinance@stran.ac.uk](mailto:studentfinance@stran.ac.uk)

T: 028 9038 4266

All above information is correct at time of publishing. Please visit [www.stran.ac.uk/courses/fees-and-finance/](http://www.stran.ac.uk/courses/fees-and-finance/) for the most up to date information on fees and finance.





# APPLYING TO STRANMILLIS

Build Your Path to Success





STRANMILLIS  
UNIVERSITY COLLEGE



YOUR **FUTURE** AWAITS

STRANMILLIS UNIVERSITY COLLEGE

Stranmillis Road, Belfast, BT9 5DY  
Northern Ireland, United Kingdom

T: +44 (0)28 90381271  
[www.stran.ac.uk](http://www.stran.ac.uk)